

Duplo



Features

- High output siren sound (127dB)
- Rugged construction for use in all environments
- Long life and run time
- Low voltage DC and high voltage AC for use in all applications
- Weatherproof to IP65
- Mounting bracket for ease of installation

Overview

The Duplo is a powerful motor driven siren which produces a very high sound output despite its physically compact construction.

With its weatherproof design, the Duplo can be used both indoors and outdoors for security, fire alarm, process control alarm and general safety warning.

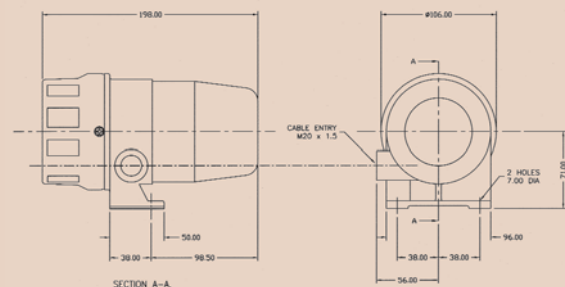
Due to its rugged construction, the Duplo can be used in arduous conditions including mining and quarrying applications.

The Duplo has a continuous rating and has been designed for longevity.

- Fire
- Railway/Marine
- Security
- Hazardous Area
- Industrial
- Public Warning

Applications

- Fire alarm; security alarm; general safety warning; conveyors; process control alarm; vehicle alarm



Part No.	Colours	Audibility at 1m	Tones	Voltage	Current
18-980214	Grey/Black	Up to 127 dB (A)	1	110V AC/DC	2.7A
18-980217	Grey/Black	Up to 127 dB (A)	1	230V AC/DC	1.0A

IP Rating: IP65 **Rating:** On 15 Minutes, Off 15 Minutes **Frequency:** 1680Hz **Operating Temp:** -30°C to +45°C
Construction: Cast Aluminium Body, ABS Rotor, Stator and Cover **Cable Entries:** 1 **Weight:** 2kg