



# EURO ONE IP

## IP. Second Nature.

The EURO ONE IP Control Panel with fully integrated IP communication, using the Emizon 21 service is the very latest innovation from Castle Care-Tech.

The EURO ONE IP is supplied 'Emizon ready' with the TCD (Telemetry Communications Device) including the IP and GPRS modules already fitted in the panel. Installation is simple with a step-by-step guide provided and of course, the usual back-support you would expect from Castle Care-Tech.

This new addition to the EURO-MERiDIAN range means that you and your customers can benefit from advances in technology, be ready for BT's 21CN roll out and at the same time, maintain the highest security standards to face the challenges of the 21st Century.



### EURO ONE IP naturally with:

Selectable EOL or iD Detection

280 Inputs

Over 200 programmable outputs

Plug-on terminal blocks

Calibrated Diagnostics

Contemporary Keypad

Intelligent power supply



**Castle Care-Tech Ltd.**  
First Floor, 6 Bracknell Beeches,  
Old Bracknell Lane West,  
Bracknell, Berkshire, RG12 7BW  
T 01344 469 479  
E sales@castle-caretech.com

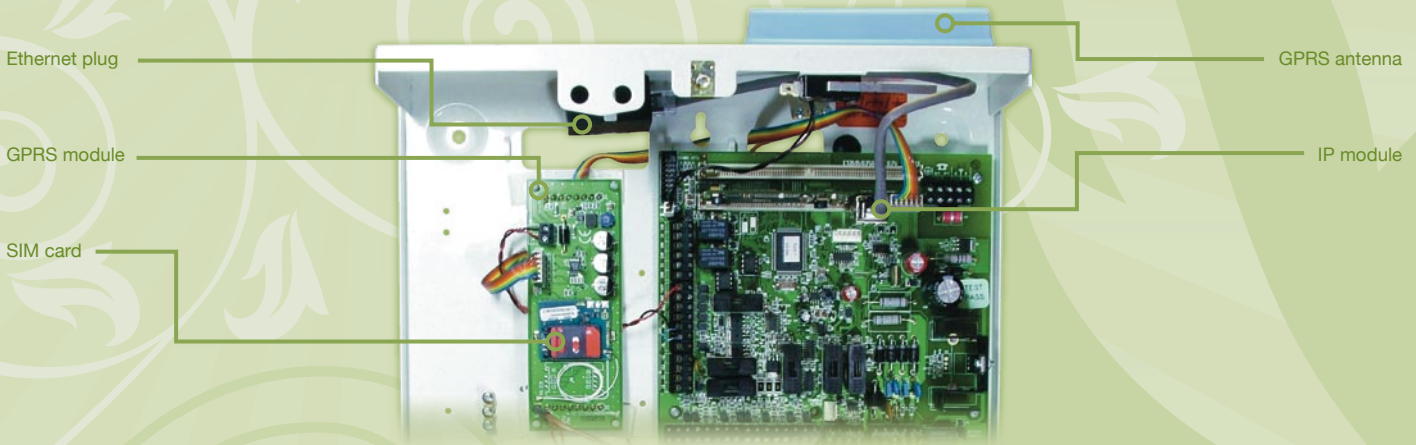


Signalling meets the requirements of EN 50131-1 Security Grade 4

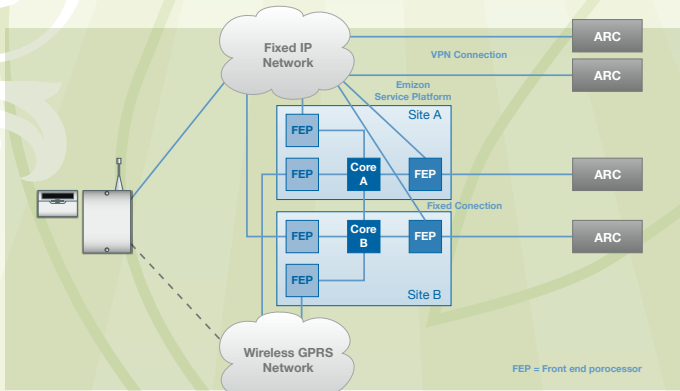


EN 50131-1 Security Grades 3





**'Plug and Play'.** Installation is straightforward with no programming or on-site configuration involved. Simply plug in the ethernet cable to your customer's router, attach the antenna for GPRS signal and wire your EURO ONE to the GPRS module. The EURO ONE IP is not site specific and works with broadband from any service provider giving you and your customers the ultimate in flexibility.



**Secure.** 'Emizon 21' is the first secure, managed, messaging service designed and developed specifically for IP Networks. The service works by actively securing the message delivery, rather than the various paths that the message travels over, unlike other IP services currently on the market.

The Emizon 21 service not only maintains, but often increases the security standards associated with traditional dual path signalling services and is EN 50131-1 Grade 4 signalling compliant.

**Cost Effective.** There is no connection charge, your customer can use their existing line and they will not incur call charges on either signalling path. The EURO ONE IP gives you all the standard features of this innovative control panel, but with enhanced communication using dual path signalling which is achieved by using IP as the primary path and the GPRS communication as the secondary path. This new development enables you to offer your customers greater functionality and enhanced security with increased cost effectiveness.

**Support.** Comprehensive back up support is available through our own technical helpline operating from 7am – 7.30pm Monday to Friday. Additionally, the Emizon 21 helpline is supported 24/7.

**By using the EURO ONE IP Control Panel, it means that you and your customers can benefit from advances in technology, be ready for BT's 21 CN roll out and at the same time, maintain the highest security standards to face the challenges of the 21st Century. It is the secure, cost effective and easy to use IP solution.**

### General

Remote signalling	Fast Format IP, SIA Level 3 IP, Contact ID IP
Dual path option	Yes, GPRS
Quad-band GPRS Transceiver	GSM 850/900/1800/1900
Line fail notification on primary path	Yes
Line fail notification on secondary path	Yes
Low battery monitor	Yes

### Electrical

Quiescent Current Consumption	<100mA
Transmitting Current Consumption	<450mA

### Compliance

Security Grading: EURO ONE IP control panel	PD 6662, EN 50131-1 Grade 3.
Security Grading: Signalling	PD 6662, EN 50131-1 Grade 4, ATS 5 for both primary and secondary paths-Form 175 compliant.
Environmental Class	2
DD 243	Compliant

### Physical

Dimensions (casing)	390mm x 305mm x 100mm
Antenna	Supplied
SIM card and GPRS contract bundle	Yes, at no additional cost
Warranty	18 months

**IP.** Internet Protocol is the method used to exchange data between two computers or other systems (in this case the alarm system and the ARC) via the internet. EURO ONE IP uses IP via a DSL (broadband) connection as its primary (fixed) path.

**Router.** Provides the gateway your customer's premises into the global IP network. The router enables the control panel to communicate with the Emizon platform and then onto the ARC.

**GPRS.** General Packet Radio Service is a standard for wireless communications which runs at a faster speed than GSM. It is ideal for sending and receiving small bursts of data, as well as larger volumes. The EURO ONE IP panel uses Vodafone's GPRS network as its secondary communication path.

**For further information, visit [www.castle-caretech.com](http://www.castle-caretech.com)**