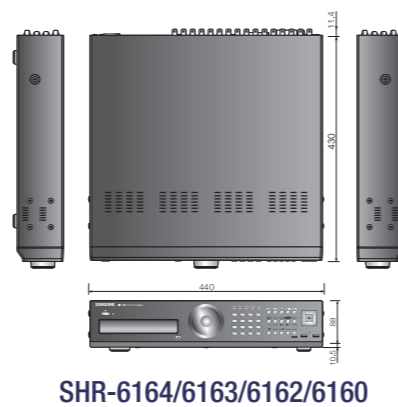


Easy-to-Use
the DVR for Users
»»



SHR-6164/6163/6162/6160



SHR-6082/6080

Model	SHR-6164/6163/6162/6160	SHR-6082/6080
System	Language Support (16EA)	
Language	•	
System Log	•	
Event Log	•	
Storage up (Capacity Notification)	•	
O/S	Linux	
Resolution Level	CIF / Half D1 / D1	
Live Resolution	704 x 480 (NTSC) / 704 x 576 (PAL)	
Codec (Video / Audio)	MPEG-4 / ADPCM	
HDD	250 / 500 / 750 / 1,000G (SATA)	
Built In HDD Capacity	SHR-6163/6160 : 6EA / SHR-6164/6162 : 5EA SHR-6080 : 6EA / SHR-6082 : 5EA	
Network Time Protocol (NTP)	•	
Daylight Saving (Summer Time)	•	
Text Data Recording (for POS)	• I/F With VSI-Pro	
Jog Shuttle	•	
System Keyboard Controller (SSC-5000)	•	
RS-485	•	
Video	16	8
Audio In/Out	4/1	
Admin/user set up (set)	• (5 Step) Back up / Record(stop) / Search / PTZ / Shutdown	
Mouse I/F	•	
Play back	Speed x2, 4, 8, 16, 32, 64	
Resolution & Frame Rate	CIF (SHR-6164/6163) : 240(NTSC)/ 200(PAL) CIF (SHR-6162/6160) : 120(NTSC)/ 100(PAL) ips Half D1 : 60(NTSC)/ 50(PAL) ips D1 : 30(NTSC)/ 25(PAL) ips	CIF : 120(NTSC)/ 100(PAL) ips Half D1 : 60(NTSC)/ 50(PAL) ips D1 : 30(NTSC)/ 25(PAL) ips
Recording	Record Rate	
	CIF (SHR-6164/6163) : 240(NTSC)/ 200(PAL) CIF (SHR-6162/6160) : 120(NTSC)/ 100(PAL) ips Half D1 : 60(NTSC)/ 50(PAL) ips, D1 : 30(NTSC)/ 25(PAL) ips	CIF : 120(NTSC)/ 100(PAL) ips Half D1 : 60(NTSC)/ 50(PAL) ips D1 : 30(NTSC)/ 25(PAL) ips
	Normal	
	•	
	Schedule (continuous / Event)	
	•	
	Event	
	•	
	Event REC Duration (PRE)	
	5,10,20,30 Sec	
	Event REC Duration (POST)	
	5,10,20,30 sec / 1,3,5,10,20 min	
	Time Lapse	
	•	
	Time Lapse Spec	
	NTSC : 0.9/1.9/3.8/7.5/15 ips, PAL: 0.8/1.6/3.1/6.2/12.5 ips	
Event Rec	Alarm	
	•	
	Alarm Input/Output	
	16/4	8/4
	Alarm PRE	
	•	
	Alarm POST	
	•	
	Motion	
	• (3 Step)	
	Video loss	
	•	
	Notification (E-mail)	
	• E-mail (Motion/Alarm/Video Loss/Power on&Off/Normal Rec Start & Stop/HDD Problem/Change password)	
Search	Time Search	
	•	
	Event Search	
	•	
	Back up Search	
	•	
	Pos Search	
	•	
	Motion Search	
	• (1hr limit)	
	Search Preview	
	•	
	Search Go to First/ Last	
	•	
Back up	DVD	
	•	
	USB	
	• (Version 2.0), 3EA	
	Format	
	DVR / AVI / SEC (include Player)	
	Device capacity Display	
	•	
Network	Simultaneous Network Connection	
	Live Monitoring 10 / Search 1Person	
	Network Spec	
	Cable Modem, Lan, ADSL	
	Network (TCP/UDP)	
	•	
	Web viewer S/W	
	•	
	CMS Support	
	•	
	Web viewer	
	•	
	Web viewer BACK UP	
	•	
	Web viewer port	
	•	
	Web viewer P/T/Z	
	•	
	Call back	
	•	
	DDNS	
	•	
	Band width setup	
	Unlimited/2/1.5/1 Mbps /800/600/500/400/300/128 kbps	
	Firmware update	
	• (Network /USB)	
	Set up file Export/Import	
	•	
Camera	P/T/Z Device	
	Samsung / Pelco-D / Pelco-p / Panasonic / Philips / AD / DIAMOND / ERNA/KALATEL / VCL TP / VICON Total 12ea	
Monitor	Dual Output (VGA/BNC)	
	•	
Video Out	Composite	
	• (BNC 1EA)	
	Spot	
	• (1EA)	
	VGA	
	• Up to 1280 x 1024 (60Hz)	
Storage	6EA (Without DVD) / 5EA (With DVD)	
Dimension	440(W) x 88(H) x 430(D)mm	
Weight	7.3Kg	

DVR with Easy Graphical User Interface »»

SAMSUNG ELECTRONICS 8Ch / 16Ch DVR

- Dual Codec to Enhance Recording & Network Transmission
- Powerful Search Capabilities & Easy Back Up during Playback
- Networking and integration capabilities using Samsung central monitoring system (*NET-I*)



SHR-6164/6163/6162/6160/6082/6080

- CIF 240 ips recording (SHR-6164/6163)
- CIF 120 ips recording (SHR-6162/6160/6082/6080)
- 4Ch / 16Ch Audio Input & 1Ch Audio Output
- Main Display Capabilities : Composite, VGA
- Spot Monitor Output (1EA)
- Built-in Web Viewer
- SATA I/F HDD Support (Internal Max. HDDx6 / HDDx5)
- *NET-I* (Samsung Central Monitoring S/W) Support
- Dual Codec to enhance recording and network transmission



SAMSUNG ELECTRONICS CO., LTD.

VSS Business Team, 416, Maetan 3 Dong, YeongTong-Gu, Suwon City, Kyeonggi-Do, Korea, 443-742
Tel: +82-31-277-3342-3347 Fax: +82-31-277-6597 http://www.securitysamsung.com

Distributed by

* Design and specifications are subject to change without notice

Explore a fully Featured DVRs SHR-6000 series



»» SHR-6164/6163/6162/6160/6082/6080

- Incredible searching performance with easy-to-use User Interface
- Smooth video over the network
- Innovative and simple design
- Networking and integration capabilities using Samsung central monitoring system *NET-I*

>> Easy Graphical User Interface

SHR-6164(with DVD)/SHR-6163(without DVD) provide 240(NTSC)/200(PAL) ips of Play Back & Recording Rate at CIF Quality.
(SHR-6162/6160/6082/6080 : 120(NTSC)/100(PAL) ips)



Launcher

Play back

PTZ Control

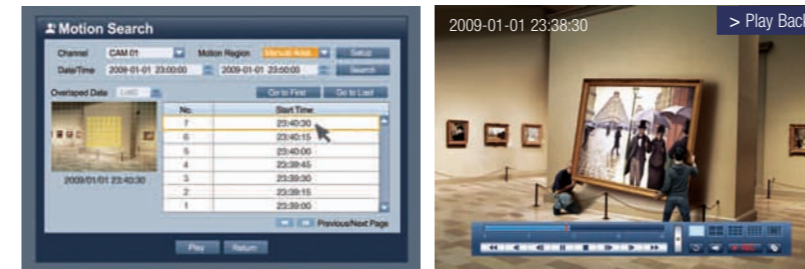
Live mode

Explore a fully Featured DVR 6000 series



Motion Search

One hour window motion search can be easily set up by using the GUI (Graphical User Interface). Finding out what happened to your interest area is much more convenient with Motion Search function. When user set the areas want to look up, this feature shows the changes in that areas for a given period of time.



Searching Preview

For all search modes, SHR-6000 series display 1 channel still image before playback. User can easily recognize which channel to play. (All Search Mode Support)

Search Mode • Event • Back up • POS • Motion • Time



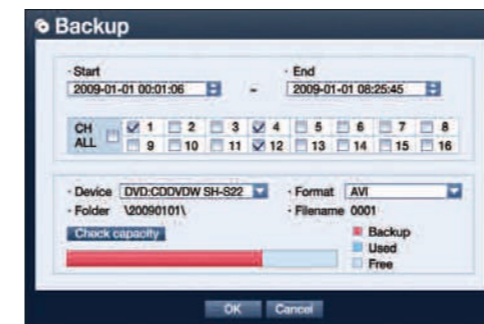
Easy play Back up during Play Back

More convenient back up is possible with SHR-6000 series as user can assign the starting point and the ending point, while playing back.



Easy Back up GUI

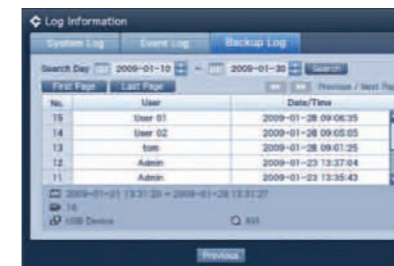
Easy-to-use Graphical User Interface (GUI) support various back up mode for each channel. User selects a back up device and start/end time, and then DVR automatically checks the capacity of the device.



System / Event / Back up Log

The administrator can check the history of DVR by System/Event/Back up Log.

- System Log : Providing the log about system such as system start/end and the changes in menu setting.
- Event Log : Providing the record for events such as alarm, motion detection, and video loss.
- Back up Log : Providing the information for the time of back up, the creator of back up, the channel of back up, and the back up period.



High Resolution Display

SHR-6000 series provide simultaneous video outputs for VGA and BNC. User can experience high resolution of 1280 x 1024 through VGA output.

Supporting Resolution • 800 x 600 • 1024 x 768 • 1280 x 1024



Additional Features

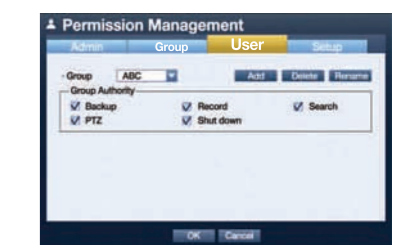
Mailing Service

Sending event information and still image (JPEG). When motion detected or alarm occurred, DVR sends images to user's e-mail and text message when there are contingent events (change of password, HDD problem, power on/off, and video loss).

- Sending Images
 - Motion / Alarm
 - Video Loss
- Sending Text Messages
 - Normal REC Start / Stop
 - HDD Problem
 - Power On / Off

Admin. / User Function

Administrator can group users and set the user authority level for each function (Back up / Record / Search / PTZ / Shut down) easily.



Built In HDD Capacity

The basic HDD capacity of 500G can be extended up to five/six (depending on the model) 1TB HDDs, a maximum HDD capacity of 6TB. For SHR-6000, up to five of 1TB HDD and for SHR-6000, up to six of 1TB HDD can be added.

• SHR-6160/6080 : HDD x 6 (max. 6TB) • SHR-6164/6163/6162/6082 : HDD x 5 (max. 5TB)

NET-i Support

SAMSUNG Central Monitoring Solution. Samsung Electronics' VMS, NET-i supports SHR-6000 series and the whole CCTV systems. For DVRs, up to 250 DVRs can be supported by NET-i.

- Support max. 250 DVRs
- Live View & Play back & E-MAP
- Remote Live View & Play back
- Search On Camera /Date /Time /Alarms
- Control PTZ Cameras
- Export Clips to Local PC
- Remote Administration



Web Viewer

Web based Monitoring & Search. Embedded web server built in SHR-6000 series can provide users to monitor and control over network anytime and anywhere.

