

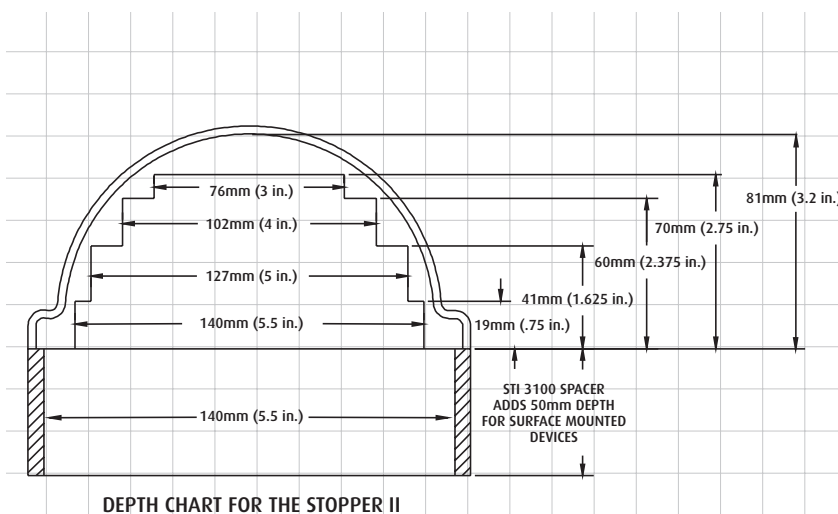
STOPPER II



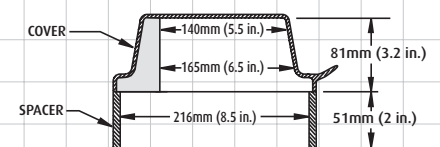
FEATURES

- Constructed from tough clear polycarbonate
- Available in red, blue, green and yellow
- Available with a choice of gaskets to protect equipment against damage from dust and grime as well as water ingress
- Break seal option for added security
- Available with or without integral sounder. Integral sounder powered by a 9V PP3 battery (included)
- Available for flush or surface mounted products
- Optional 12 or 24 VDC powered units
- Cover backed by a lifetime guarantee against breakage in normal use
- Polycarbonate tested -40°F (-40°C) to 120°F (49°C)

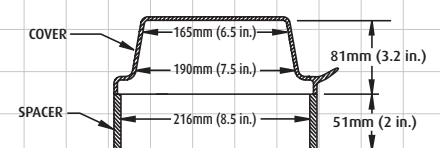
▼ Stopper II dimensions and technical information (STI 1200, STI 1230, STI 1100 & STI 1130)



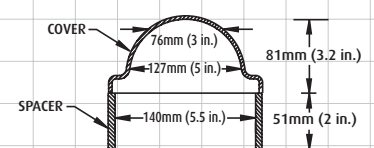
DEPTH CHART FOR THE STOPPER II



SIDE VIEW MODEL WITH SOUNDER



SIDE VIEW MODEL WITHOUT SOUNDER



END VIEW

STI STOPPER II

Larger cover to help stop malicious or accidental false fire alarms. Physically larger than the Stopper, the Stopper II is a unique device which has been helping stop false fire alarms around the world for more than 20 years, without restricting legitimate operation of devices such as fire alarm break glass call points. It is ideal for schools, colleges, hospitals, nursing homes, hotels and public buildings of almost every kind where there is a history or a threat of false alarms.

HOW IT WORKS

The Stopper II consists of a clear, tamper-proof, tough polycarbonate cover and frame that fits over the break glass call point. When lifted to gain access to the call point, its optional battery powered integral sounder emits a piercing 95/97 dB (at 1 metre). Immediate attention is drawn to the area and a prankster will either run or be caught.

MODELS AVAILABLE

- STI 1200** Stopper II flush mounted without integral sounder
- STI 1230** Stopper II surface mounted without integral sounder (includes 50mm spacer)
- STI 1100** Stopper II flush mounted with integral sounder
- STI 1130** Stopper II surface mounted with integral sounder (includes 50mm spacer)

ACCESSORIES

- STI 3100** 50mm spacer (supplied with STI 1130 and STI 1230)
- STI 1280** Backplate (for irregular surfaces)
- STI/BS** Breakable seals (pack of 10)

OPTIONS

COLOURS AVAILABLE For Green, Blue or Yellow add /G /B or /Y

ADDITIONAL SECURITY For break seal add/BS

EXAMPLE STI 1130/Y/BS = Yellow Stopper II, surface mounted with sounder and break seal facility
STI 1200 = Red Stopper II, flush mounted without sounder

NB: The Stopper II is supplied in red and with the operating instructions IN CASE OF FIRE - LIFT COVER BREAK GLASS
Alternative and custom markings are available