

Important

1. Mounting any wire free object onto UPVC will reduce the operating range-as UPVC doors contain metal and act as a shield to the wire free signal.
2. Do not expose the Door Chime unit to rain or immerse in water.
3. Do not mount the either unit close to a fireplace or expose to high temperatures.
4. Do not drop the units or subject them to excessive blows.
5. The Converter and Door Chime units are designed for indoor use only.
6. Make sure no naked flame sources, such as lighted candles are placed on the unit.
7. The unit should not be exposed to dripping or splashing and no objects filled with liquids, such as vases should be placed on the unit.
8. Do not place near a PIR. It may interfere with your Door Chime.
9. Always use recommended batteries as these will give longer service and are less likely to leak.
10. Do not use different type of batteries, or mix up old and new batteries.
11. Do not leave exhausted batteries in either unit. If leaving the doorbell for long periods, remove the battery from the compartment to prevent leakage.
12. Please dispose of old, defective batteries in an environmentally friendly manner in accordance with the relevant legislation.
13. CAUTION: Replace only with the same or equivalent type of battery that is recommended by the manufacturer.
14. CAUTION: Danger of explosion if battery is incorrectly installed or replaced.

Problem	Possible Causes	Suggested Remedy
Door Chime does not sound but LED lights up on the Bell push.	<ol style="list-style-type: none"> 1. Units out of range (max. range 100m). 2. Bell push and Door Chime units are not on same digital code. 	<ol style="list-style-type: none"> 1. Operate the Door Chime unit within the operation range (100m). 2. Re-set the digital code (see: Dip Switch Settings).
Door Chime does not sound plus no light on Bell push LED.	<ol style="list-style-type: none"> 1. Flat bell push battery. 2. Wrong polarity of battery in Bell push. 	<ol style="list-style-type: none"> 1. Change the battery. 2. Re-insert battery as internal marking in right polarity.
Door Chime sounds without Bell Push being pressed.	A similar Wire Free Door Chime product is operating nearby on the same frequency digital code.	<ol style="list-style-type: none"> 1. Re-set the digital code (see: Dip Switch Settings).

Specification

A. Push Button unit

Power : 2 x 3 volt Lithium battery (CR2032 - included)
Consumption : 7.0mA - ON
 0.003mA - OFF

C. Charger Unit

Power : A/C-D/C 9 volt 300mA adaptor (Byron model SX-36 - included)

Operating Temperature : -10°C to +40°C

Operating Distance : 100 metres (320 feet approx.) in open field

Selectable Tone : Total eight (8) tones available

Selectable Digital Code : Total sixteen (16) possible digital codes

B. Door Chime unit

Power : 3 x 1.5 volt Ni-Mh batteries (included)
Consumption : 200mA - ON
 0.3mA - Stand By

Type R2 Device - device where the sound output is created by the initial operation of the control and where the period of sound output continues for designed duration irrespective of condition of the control.

CE 0681



C H Byron (Electrical) Ltd

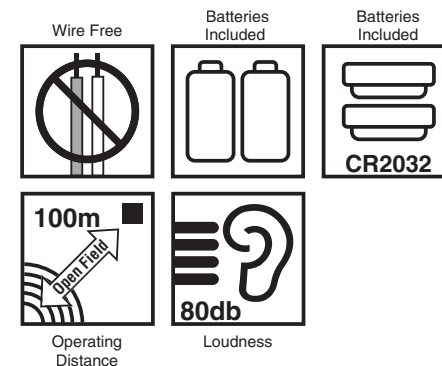
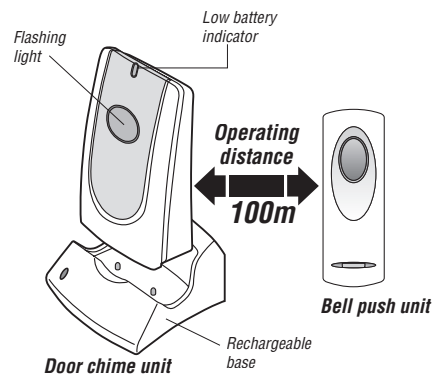
www.chbyron.com

e-mail: support@chbyron.com

Byron

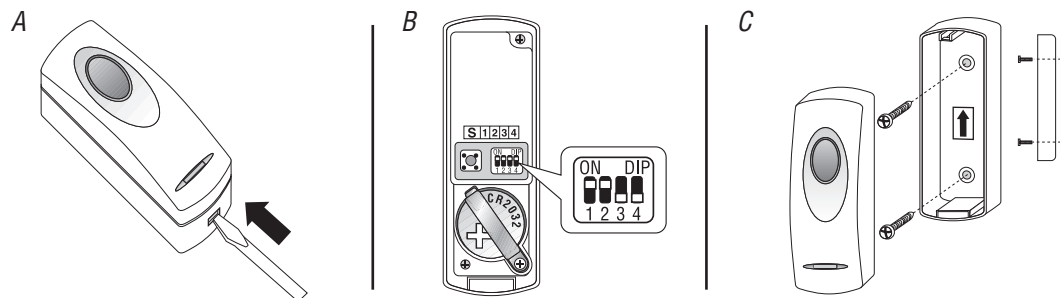
Wirefree rechargeable chime kit

SX-201



No wiring is required for this Wire Free portable Door Chime Kit. When the Bell Push is pressed, it sends a wire free signal to the Door Chime unit that activates the chime. As the operating range is up to 100 meters (320ft. approx. - in open field), you can mount or take the Door Chime virtually anywhere in the home. However, the transmission range of the wire free signal will be reduced if the signal is transmitted through a number of walls or ceilings. Metal and UPVC doors and doorframes will also reduce the operating range.

Bell push unit



Bell Push Unit

2 x 3 volt Lithium batteries (CR2032) have already been installed. Your Bell Push is ready to use.

Channel Selection - Dip Switch Settings

Before installing the Bell Push you should create your own combination of dip switch settings.

1. Remove the back of the Bell Push case by pushing in the tab on the bottom with a small, flat screwdriver (dia.A).
2. Inside the Bell Push there is a 4 position dip switch marked 1, 2, 3 & 4. Use a screwdriver to alter the dip switch levers to either "ON" or "OFF" positions, which can be altered to achieve a total of sixteen (16) possible digital codes.
3. Select any combination (e.g. 2 up 2 down) (dia.B).

Do not refit the front cover of the Bell Push just yet.

Installation Guide

Important: Mounting the Bell Push unit on UPVC doors, doorframes or a metal surface will reduce the broadcasting range and may cause intermitance.

Using the two holes on the back of Bell Push as a template (you will need to pierce the holes), mark the fixing position for the unit. If fixing into a solid wall drill 6mm holes, fit wall plugs and secure the Bell Push unit with the 2 x 16mm screws provided. If fixing into timber, use a small bradawl to make a pilot hole and fix directly with 2 x 16mm screws provided (dia.C).

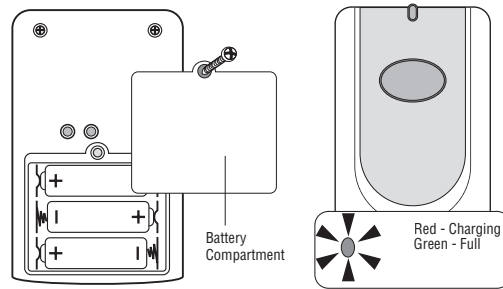


Doorchime Unit

Rechargeable batteries are already inserted on purchase.

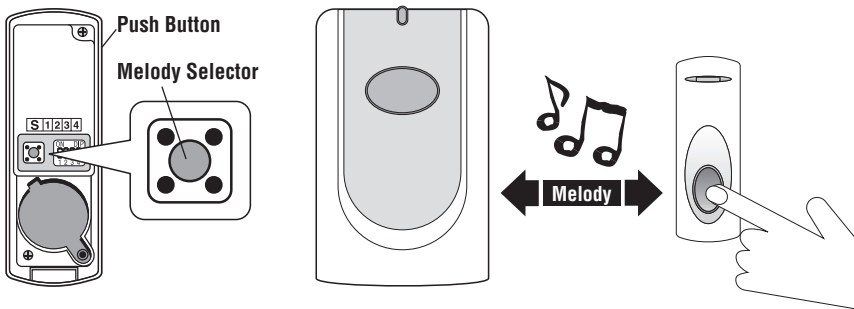
Changing the rechargeable batteries
Unscrew the screw at the top of the battery compartment. Slide open the battery compartment door. Insert 3 x 1.2 volt Ni-Mh batteries (included) into the battery compartment, ensuring the battery polarity matches the internal markings. It will beep twice to indicate that it is ready for the new operation code registration (Please see Digital Code Set Up). Close the battery door and charge the batteries before use.

Place the Chime unit onto the charger, the LED on the charger will light up Red to indicate that the batteries are charging. When the LED on the charger lights up in Green colour, it is indicating that the charging procedure is complete and the chime unit is ready to use. Replace the doorchime unit on the base when not in use.



Melody Selection

The Melody Selector is located inside the push button unit. It is a small button in the top left corner of the battery compartment marked with "S". Press the switch once, the melody will change to the next one on the list, there are a total of 8 melodies for selection. The Push Button is pre-set to "Electro Mechanical - Ding Dong" therefore, if no change is required, it should not be adjusted.



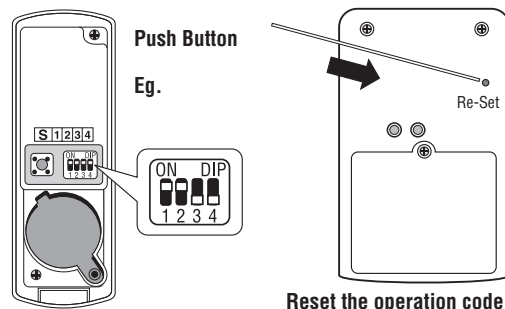
- | | | | |
|-----------------------------------|------------------|------------|----------------|
| 1) Electro Mechanical - Ding Dong | 3) Jive | 5) Piano | 7) Dog Barking |
| 2) Westminster - 8 notes | 4) Wedding March | 6) Harmony | 8) Ringer |

Additional Byron "SX" range products can be purchased for compatibility. SX-4 & SX-41 models will not work with other SX models.

Digital code set-up

The unit comes from the factory on a pre-set radio frequency digital code. However, should your door chime activate intermittently for no reason at all, it is possible that a similar unit is operating nearby on the same frequency digital code. The encoded frequency of the Push Button (transmitter) can be changed to avoid this problem. The Door Chime unit is equipped with advanced self-learning operation code ability therefore no setting is needed.

- Remove the back of the case from the Bell Push unit. There is a 4-position dipswitch marked 1,2,3 & 4. Use a screwdriver to alter the dipswitch levers to the "On/Off" position, which can be altered to achieve total sixteen (16) possible digital codes.
- Insert a pin into a small hole at the back of Door Chime unit marked "re-set", then press, it will give 2-beeps sound to indicate that it is ready for new code registration.



Digital code set-up (cont)

- Select any combination on the Push Button. Press the Push Button, the Door Chime unit will sound to indicate the new operation code is registered and memorized, and it will only work with it.
- To re-set the operation code, simply remove the batteries from the Door Chime unit and rest for 30 seconds, it will erase the memory. Re-insert the batteries into the Door Chime unit, it will give 2-beeps sound to indicate that it is ready for new code registration. Press the Push Button to confirm the new code is working.
- Test to ensure correct operation before final installation.

Door chime unit operation

Sound volume adjustment

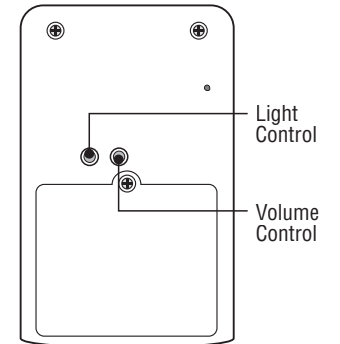
Sound Volume Control button is located at the back of item, press the button to adjust the sound volume up and down. There is a total of 8 different volume level set, 1=mute and 8=max, the Door Chime will start to operate at sound level 6.

Light option control button

It is located at the back of item, press the button to adjust the light function. There are 4 light display options:

- Slow Strobe effect for the duration of 5 seconds.
- Fast Strobe effect for the duration of 5 seconds.
- LED light will stay on for 2 second then go off for 1 second, twice.
- LED light off.

The door chime will start to operate at "Light Off" position

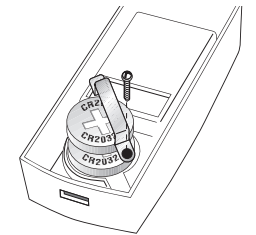


Charger

Connect the charger with A/C-D/C 9 volt 300mA adaptor (Byron model SX-36 - included), then plug the adaptor into any convenient 13 amp wall socket, then it is ready to use.

Replacing the bell push batteries

Remove the Bell Push unit front cover. Remove the locking screw from the battery fastener. Insert 2 x CR2032, 3 volt Lithium batteries (Byron SX100) in the battery compartment, ensuring the battery polarity matches the internal markings. Tighten the screw on the battery fastener to hold the batteries firmly in their compartment and refit the front cover.



Low battery indicator

Red LED indicator on the top of Door Chime unit will flash when the batteries are running low to the point that they need to recharge. Simply place the chime unit onto the charger to recharge the batteries.