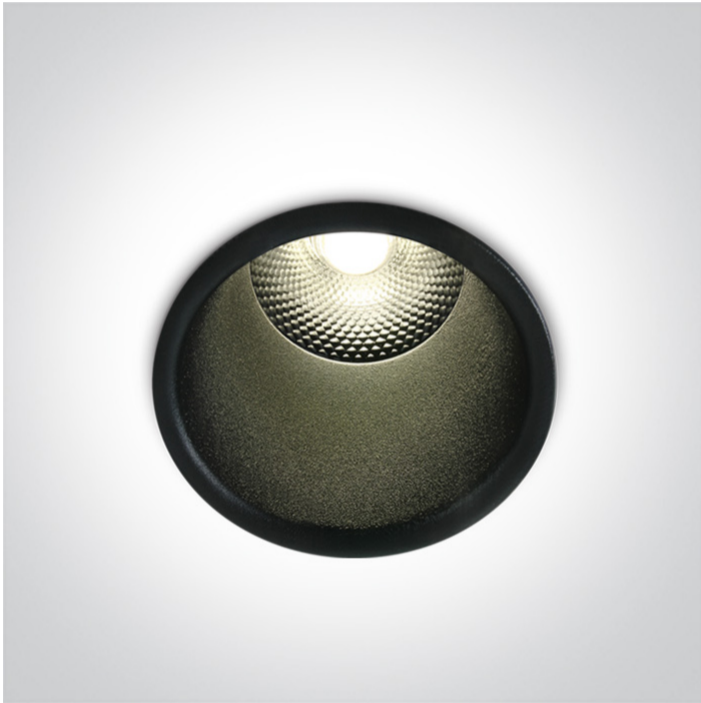


02 Recessed Spots Fixed LED>The Dark Light Pro Range

## 10105FD/B/W



5W COB LED recessed spot, IP20, for general lighting applications.

Supplied with non-dimmable LED driver. Complies with standard EN60598-1 and any other specific standards.



### Downloads



### Dimensions



### Gallery






### Physical Specification



Item Group	02 Recessed Spots Fixed LED
Family	The Dark Light Pro Range
Order Code	10105FD/B/W
Colour	Black
Material	Aluminium
Shape	Circular
Height	95mm

Diameter	55mm
Cutout Hole Diameter	50mm
Recessed Ceiling	Yes
Depth Required	120mm
Indoor	Yes
Adjustable	No


## Electrical Characteristics

Gear	External-Included
Fitting + Driver	
Input Voltage	220-240V
50 Hz	Yes
60 Hz	Yes
Safety Class	
Power(Watts)	5W
IP Rating	IP20
Light Source	LED built in
Dimmable	No
F Mark	

Fitting	
Input Type	Constant Current
Input Current	300mA
Voltage	14,9V
Safety Class	
Power(Watts)	4,5W
IP Rating	IP20
Light Source	LED built in
LED Type	COB
LED Brand	Epistar

LED Number	1
F Mark	
<b>Gear</b>	
Gear Type	Led Driver
Input Voltage	220-240V
50 Hz	Yes
60 Hz	Yes
Power(Watts)	4,2-7,25W
Power Factor	0,9
Constant Current	Yes
300mA	14-24v
IP Rating	IP20
Safety Class	
Dimmable	No
Housing Material	Plastic
Brand	LIFUD

#### Illumination Data

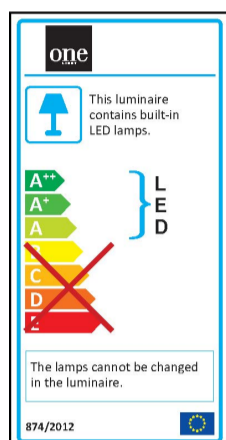
Colour Temperature	3000K
Lumen Output	300lm
Light Efficiency	60lm/W
CRI	80
Beam Angle	24°
Illumination Diagram	
Dark Light	Yes

#### Packing Info

Box Length	9cm
Box Width	7cm

Box Height	12cm
Pcs/Carton	50
Barcode	5291889057352
HS Code	9405409900

## Energy Label



## Certification & Warranty

Warranty	2 Years
Weee Directive	Yes

switch to  
**one light!**

**one**  
LIGHT

