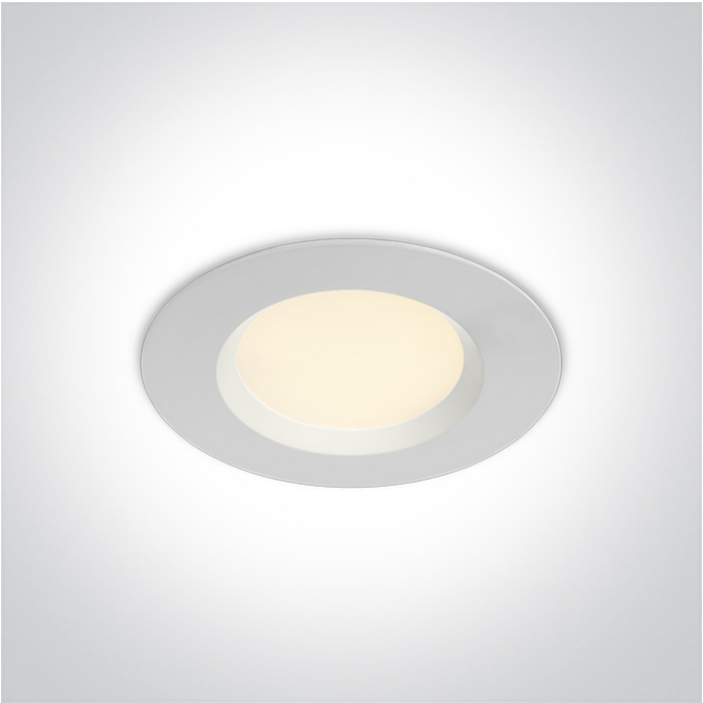




New 2020 Edition 2>Downlights Fixed LED

10107UV/W



7W SMD LED UGR19 downlight with adjustable CCT, IP44.

Complete with 200mA driver.

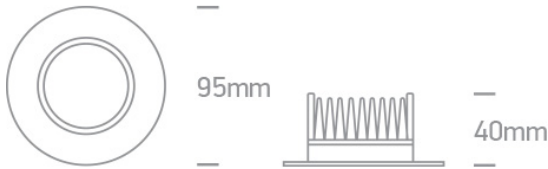
Complies with standard EN60598-1 and any other specific standards.



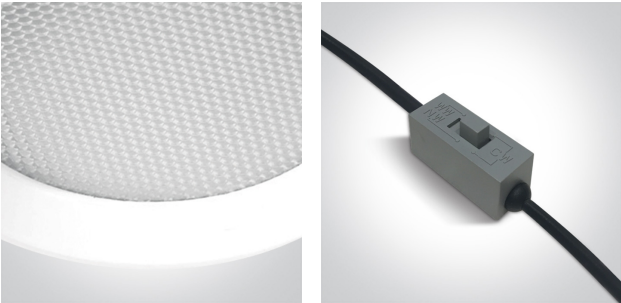
Downloads



Dimensions



Gallery






Physical Specification

Item Group	New 2020 Edition 2
Family	Downlights Fixed LED
Order Code	10107UV/W
Colour	White
Material	Die Cast
Shape	Circular
Height	40mm



Diameter	95mm
Cutout Hole Diameter	70mm
Recessed Ceiling	Yes
Depth Required	60mm
Indoor	Yes
Adjustable	No

Electrical Characteristics

Gear	External-Included
Fitting + Driver	
Input Voltage	220-240V
50 Hz	Yes
60 Hz	Yes
Safety Class	
Power(Watts)	7W
IP Rating	IP44
Light Source	LED built in
Dimmable	No
F Mark	


Fitting	
Input Type	Constant Current
Input Current	180mA
Voltage	38V
Safety Class	
Power(Watts)	6,84W
IP Rating	IP44
Light Source	LED built in
LED Type	SMD 2835
LED Brand	Epistar

F Mark
Gear
Gear Type
Input Voltage
50 Hz
60 Hz
Power(Watts)
Power Factor
Constant Current
Output
Voltage Range
IP Rating
Safety Class
Dimmable
Housing Material
Output Terminal
Brand
Protection

	
Led Driver	
220-240V	
Yes	
Yes	
5,4-8,4W	
0,9	
Yes	
180mA	
25-42V	
IP44	
	
No	
Plastic	
Cable	
Lifud	
Short Circuit and Overload	

Illumination Data

Colour Temperature
Lumen Output
Light Efficiency
CRI
Illumination Diagram
UGR

3000-4000K-6000K
525lm
75lm/W
80

19

Packing Info

Pcs/Carton

40

Barcode	5291889064817
HS Code	9405409900

Energy Label



Certification & Warranty

Warranty	3 Years
Average Lifetime	30000hrs
Weee Directive	Yes

switch to
one light!

