



07 Downlights Adjustable>Trimless Multi System Modules For Bases

11150TR/W/38



Trimless Multi System Module with G12 lampholder.

Requires Ballast

Suitable for G12 LED lamps (direct 230V)

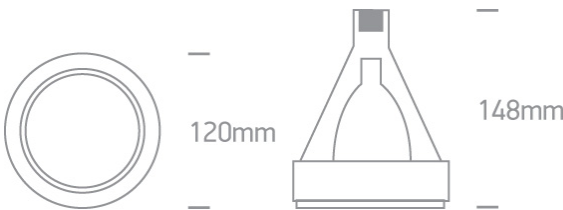
Complies with standard EN60598-1 and any other specific standards.



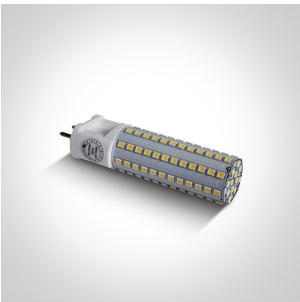
Downloads



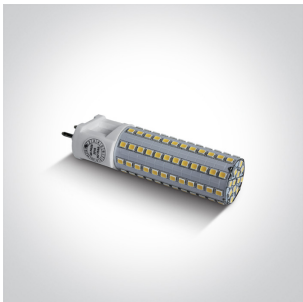
Dimensions



Related items



8010L/C



8010L/W

Physical Specification



Item Group	07 Downlights Adjustable
Family	Trimless Multi System Modules For Bases
Order Code	11150TR/W/38
Colour	White
Material	Die Cast
Shape	Circular
Height	48mm

Diameter	120mm
Recessed Ceiling	Yes
Indoor	Yes
Adjustable	2 Directions

Electrical Characteristics

Gear	No
------	----

Fitting + Driver

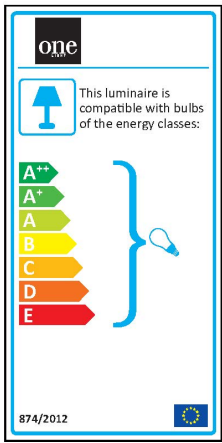
Input Voltage	220-240V
50 Hz	Yes
60 Hz	Yes
Safety Class	
Power(Watts)	70W
IP Rating	IP20
Light Source	Replaceable lamp
Lamp Holder	G12
Number of Lamps	1
Dimmable	N/A
Cable Length	30cm
F Mark	

Illumination Data

Illumination Diagram	
----------------------	---

Packing Info

Pcs/Carton	36
Barcode	5291889019800
HS Code	9405409900



Certification & Warranty

Warranty

5 Years

Weee Directive

Yes

switch to  
one light!

