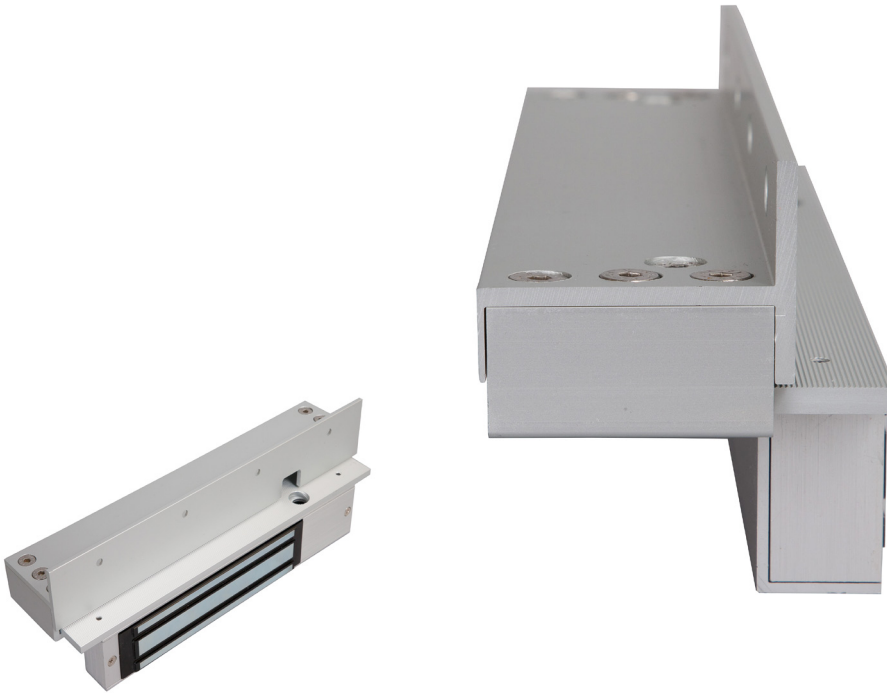


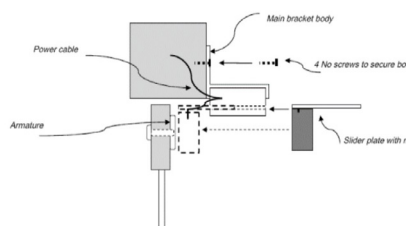
# Electronic Locking Magnet Range



Completely adjustable 'L' Bracket

## Technical specifications

- Available for ML600 and ML1200 Range
- Allows infinite adjustment and positioning
- Very easy to fit and drastically reduces the installation time.
- Simple to adjust magnet position
- No fixings required into the underside of the transom.
- Incorporates a cavity and cut out to make cabling easier
- Comes completely assembled.



## FEATURES

- Bracket to fix to the transom.
- 2 end guide channels for the plate to slide between.
- Flat bar sliding plate to fix the magnet to.

ADJ-600L	295Lx60Dx32/57H	L Bracket 600 Range	85g (Boxed) / 70g (Unboxed)
ADJ-1200L	318Lx60Dx32/57H	L Bracket 1200 Range	90g (Boxed) / 75g (Unboxed)

Other items in the RGL range.

