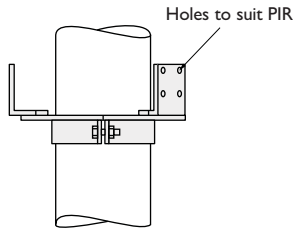
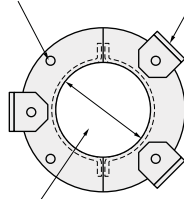


## PIR Mounting Brackets

### AW1962 PIR mount ring



Mounting positions for up to 5 No. PIR's

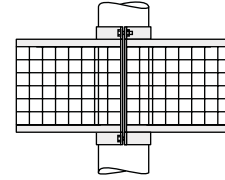


Clamp to suit pole diameter

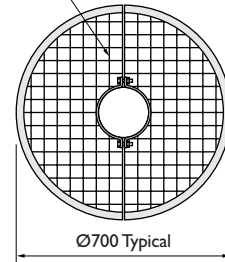
Part No.	Pole Diameter
AW1962/76	Ø76
AW1962/89	Ø89
AW1962/114	Ø114
AW1962/139	Ø139
AW1962/168	Ø168
AW1962/193	Ø193
AW1962/219	Ø219
AW1962/273	Ø273

● Stock items

### AW1962/CG Cage enclosure for PIR mounting ring



2" x 2" weldmesh



### AW2274 Clamp-on PIR pole bracket

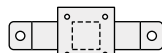
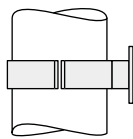
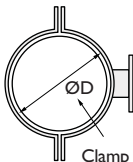


Plate to suit PIR employed

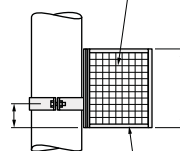


Clamp to suit pole diameter

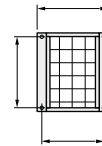
These can be doubled up back to back

### AW1983 PIR bracket and cage

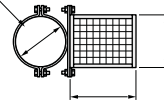
25 x 25 x 3 mesh on 4 sides only  
50 x 50 x 3 on front face



13 x 13 x 3 angle frame



Clamp to suit pole diameter



These can be doubled up back to back

Produced for all pole sizes as AW1962 mounting rings

### AW2275 Clamp-on tower leg bracket for PIR

