



# AX6000 Next-Gen Wi-Fi Router

Faster. Broader.  
Higher Capacity.



Archer AX6000

➤ 4804 Mbps 5GHz  
1148 Mbps 2.4GHz

➤ 2.5Gbps WAN Port  
Hi-Speed Internet Access

➤ OFDMA & MU-MIMO  
4X Higher Performance

➤ 1.8GHz Quad-Core CPU  
Top-Notch Processing

# Highlights

## 802.11 AX<sup>≡</sup> Faster. Broader. Higher Capacity.

The Archer AX6000 is TP-Link's first router with Wi-Fi 6 – based on the next generation 802.11ax Wi-Fi technology. Take your Wi-Fi to the next level while being backwards compatible with 802.11a/b/g/n/ac Wi-Fi standards.

**4X<sup>≡</sup>**

### 4x Higher Performance

The new Downlink and Uplink MU-MIMO and OFDMA achieve a performance boost 4x that of 802.11ac

**4X<sup>≡</sup>**

### 4x Larger Capacity

OFDMA greatly increases the number of connected devices by assigning channels to more devices simultaneously

**3X<sup>≡</sup>**

### 3x Faster Speed

1024 QAM and Long OFDM Symbol boost overall speeds up to an incredible 6000 Mbps

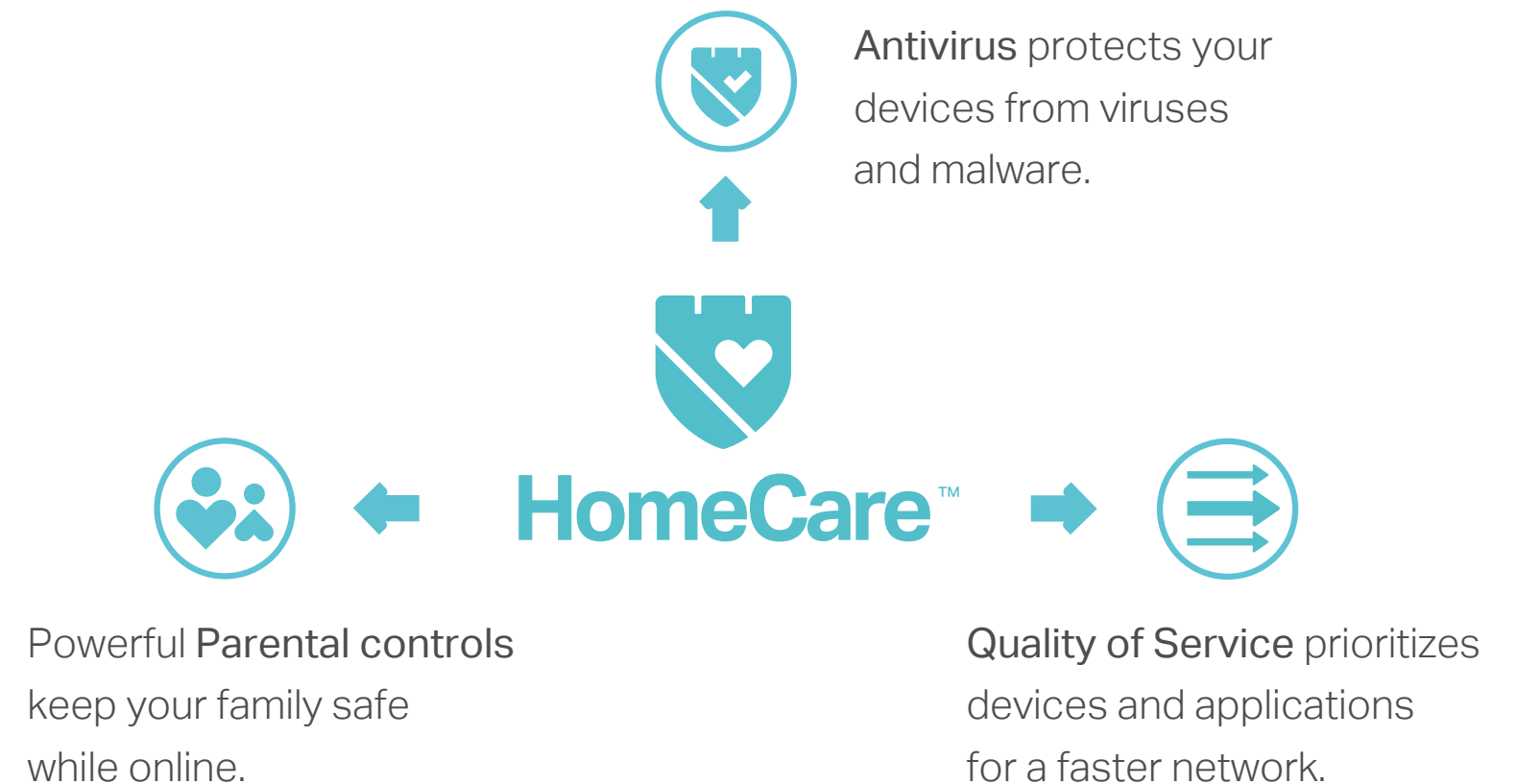


### Boosted Coverage

Beamforming and RangeBoost technology provide stronger, more reliable connections

## Homecare™ for Comprehensive Home Threat Protection

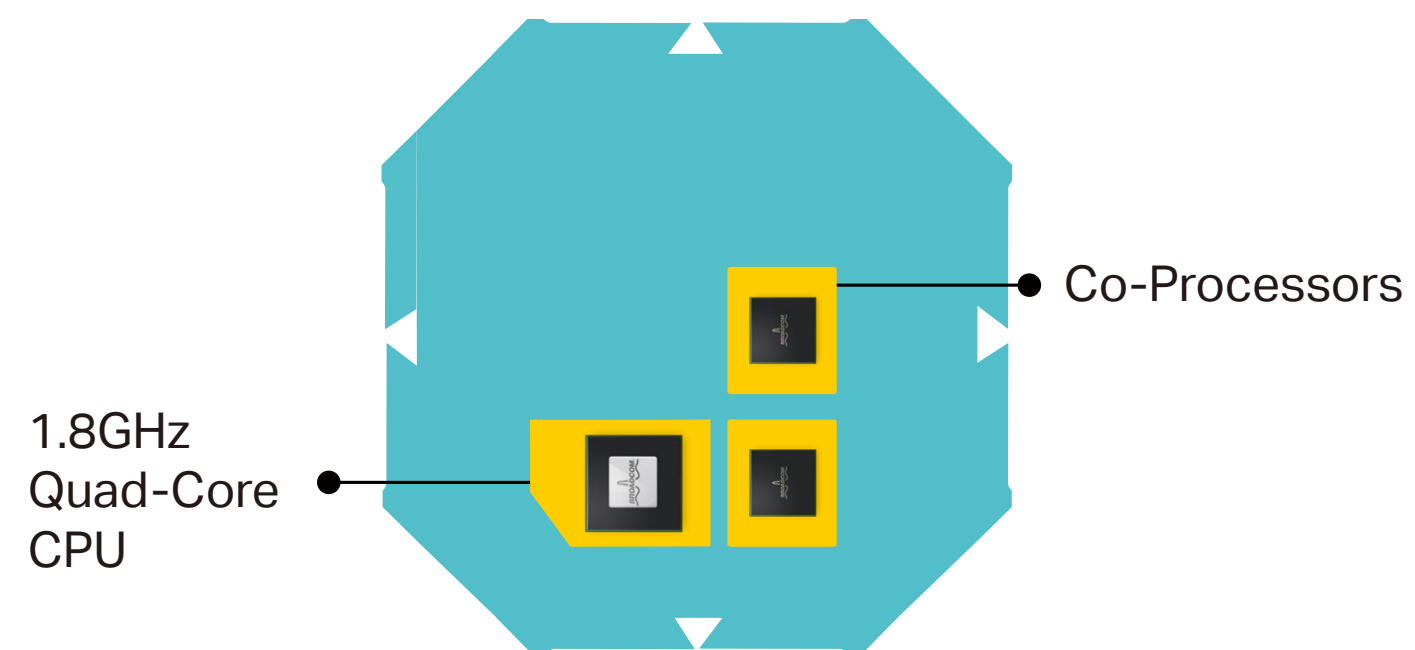
Defend your system from malicious threats that can sneak through downloads and file sharing. TP-Link HomeCare™, powered by Trend Micro™, protects every device from the latest cyber threats with powerful security, built-in antivirus, and cutting-edge intrusion prevention, comprehensively creating a highly protected smart home environment.



# Highlights

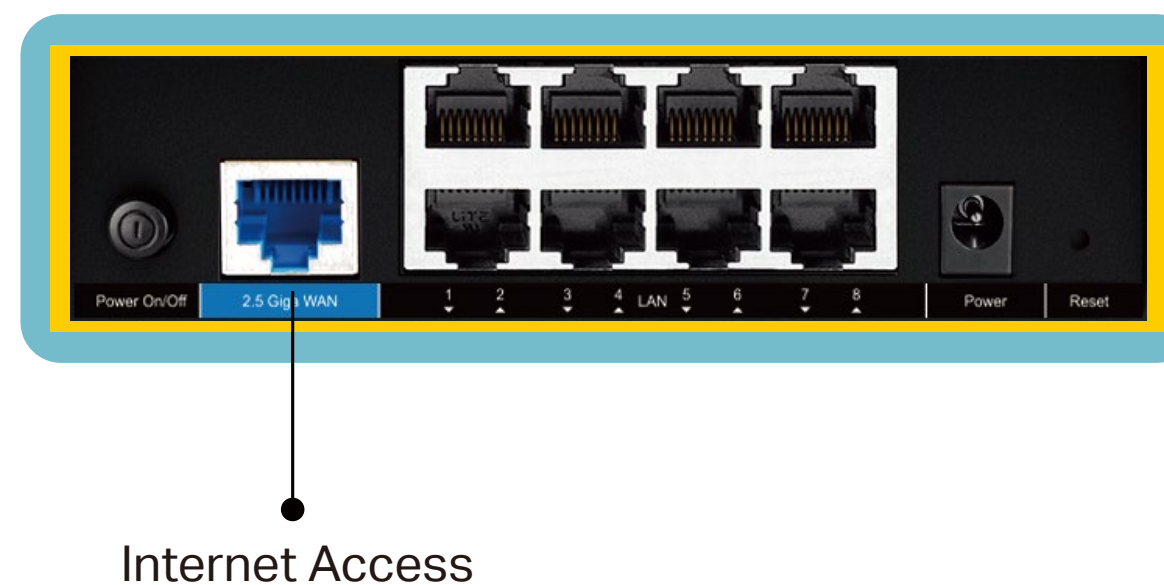
## 1.8GHz 64-bit Quad-Core CPU

An extremely powerful 1.8GHz 64-bit quad-core processor, two distinct co-processors, and 1GB of RAM work tirelessly to power your network.



## 2.5Gbps WAN Port

Archer AX6000 provides a 2.5Gbps WAN port to make fully use of the over 1Gbps internet access, boost the whole internet throughput.

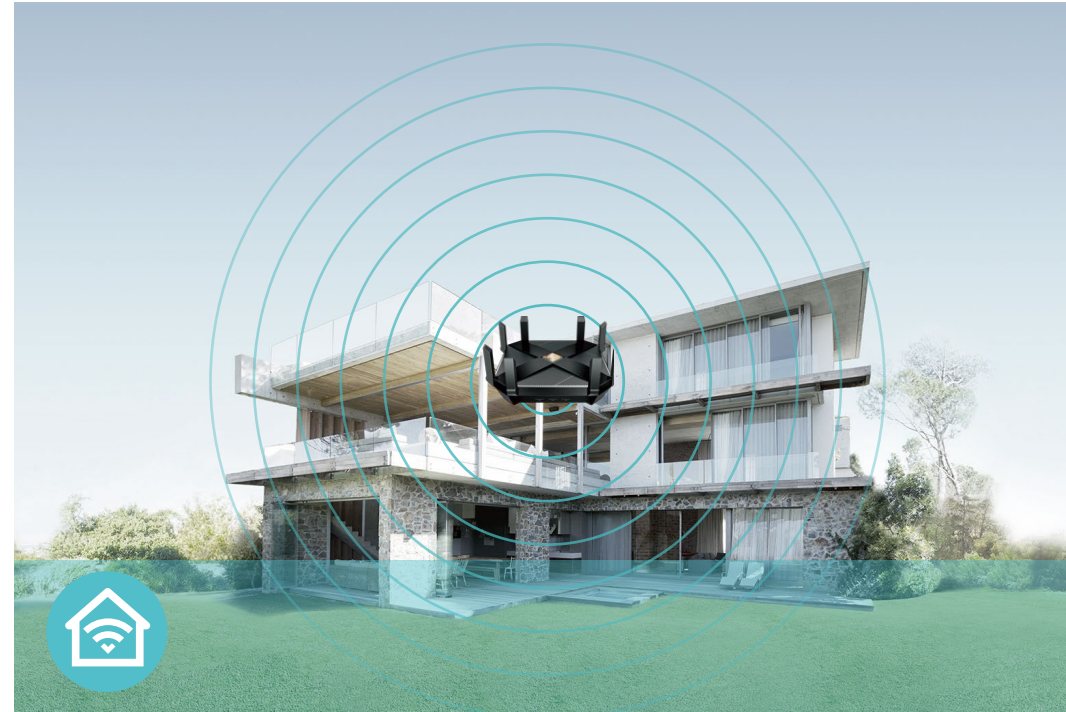


# Features



## Speed

- AX Tech – 802.11ax (also known as Wi-Fi 6) features advanced technologies including OFDMA, MU-MIMO and 1024QAM, drastically increasing the speed and efficiency of the entire network
- Ultimate Wireless Speed – 1148 Mbps on 2.4GHz (802.11ax) + 4804 Mbps on 5GHz (802.11ax)
- 1.8GHz 64-bit Quad-Core CPU – Balances the demands of your devices and improves NAT throughput to keep connections fast and continuous
- Link Aggregation – Doubles the connection speeds to an external storage devices for faster streaming and data backup
- Accelerated VPN Access – Securely connects to private networks providing 5× faster OpenVPN and PPTP VPN connections



## Wi-Fi Range

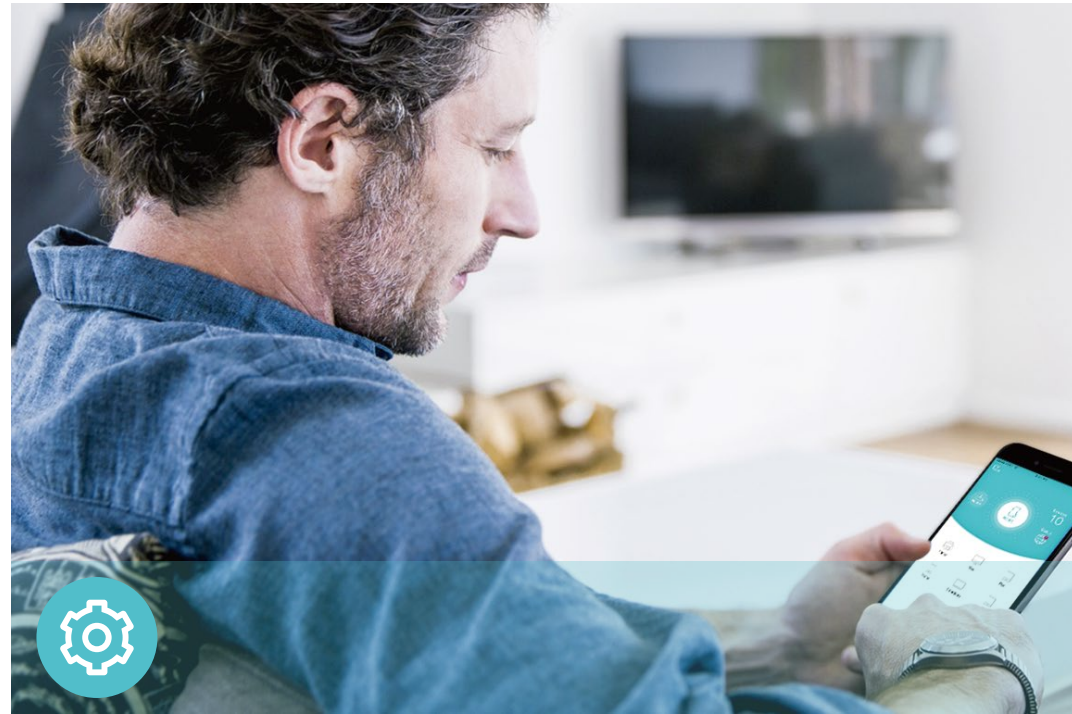
- Ultimate Range Wi-Fi – 8 high-gain external antennas deliver a Wi-Fi signal to every corner of your home, making all of your connections more efficient and stable.
- Range Boost – Greatly enhances receiving sensitivity to deliver a more stable router-client link
- Beamforming Technology – Concentrates Wi-Fi signals towards individual devices to ensure stronger connections



## Reliability

- Airtime Fairness – Balances bandwidth of connected devices to improve overall throughput and efficiency
- Smart Connect – Intelligently switches each device's connection to the optimum available Wi-Fi band
- Easy Bandwidth Management – Advanced QoS makes it easier for you to manage the bandwidth of connected devices or applications

# Features



## Ease of Use

- Intuitive Web UI – Ensures quick and simple Installation without hassle
- Fast Encryption – One-touch WPA wireless security encryption with the WPS button
- Easy On/Off – Turn on/off wireless radio using the Wi-Fi button; turn on/off LEDs using the LED button
- Power On/Off – Conveniently power on or off your router as required
- Hassle-free Management with Tether App – Network management is made easy with the TP-Link Tether App, available on any Android and iOS device
- Bluetooth Onboarding – Open phone's bluetooth and quickly sets up the network via the Tether app



## Security

- Antivirus – Protects all connected devices in your home from viruses and malware
- Guest Network – Keeps your main network secure by creating a separate network for friends and visitors
- Access Control – Establishes a whitelist or blacklist to allow or restrict certain devices to access the internet
- Parental Controls – Restricts internet access time and contents for children devices
- Encryptions for Secure Network – WPA-PSK and WPA2-PSK encryptions provide active protection against security threats



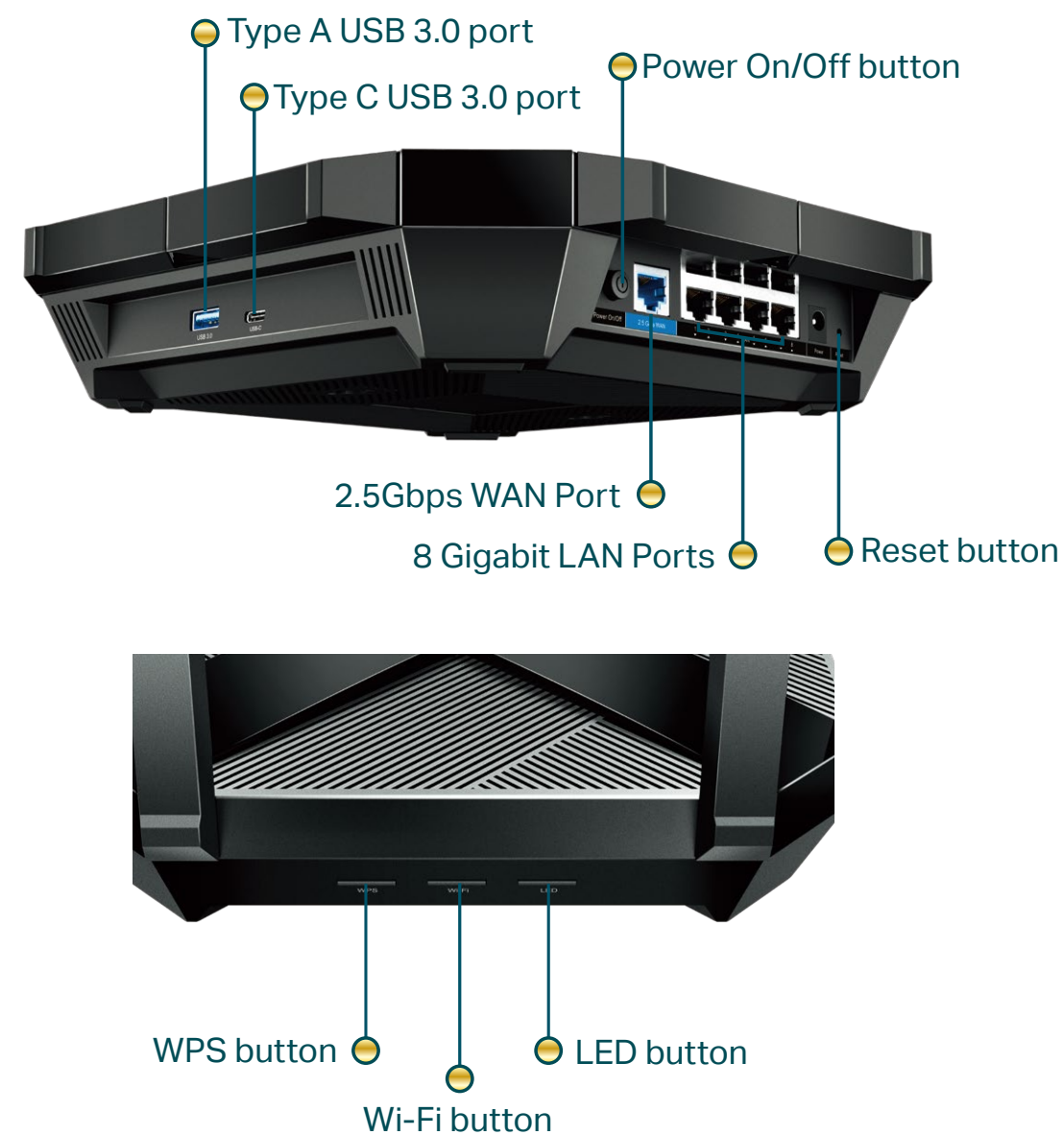
## Easy Sharing

- Type C & Type A USB 3.0 Ports – Provide data transfers up to 10× faster than a traditional USB 2.0 port.
- Built-in Media Server – Allows you to play music, watch videos and view photos from any device on your network

# Specifications

## Hardware

- Ethernet Ports: One 2.5Gbps WAN Port, Eight Gigabit LAN Ports
- USB Ports: One Type A & One Type C USB 3.0 Ports
- Buttons: WPS Button, Wi-Fi On/Off Button, LED On/Off Button, Power On/Off Button, Reset Button
- Antennas: 8 High-Performance External Antennas
- External Power Supply: 12V/4A
- Dimensions (W x D x H): 10.3×10.3×2.4in (261.2×261.2×60.2mm)



## Wireless

- Wireless: 1148 Mbps on 2.4GHz (802.11ax) + 4804 Mbps on 5GHz (802.11ax), compatible with 802.11a/b/g/n/ac Wi-Fi standards
- Frequency: 2.4GHz and 5GHz
- Transmit Power:
  - CE: <20dBm(2.4GHz), <23dBm(5.15GHz~5.35GHz); <30dBm(5.47GHz~5.725GHz)
  - FCC: <30dBm(2.4GHz & 5.15GHz~5.25GHz & 5.725GHz~5.825GHz)
- Reception Sensitivity:
  - 5GHz:
    - 11a 6Mbps: -97dBm, 11a 54Mbps:-79dBm
    - 11ac VHT20\_MCS0:-96dBm, 11ac VHT20\_MCS11:-66dBm
    - 11ac VHT40\_MCS0:-94dBm, 11ac VHT40\_MCS11:-63dBm
    - 11ac VHT80\_MCS0:-91dBm, 11ac VHT80\_MCS11:-60dBm
    - 11ac VHT160\_MCS0:-88dBm, 11ac VHT160\_MCS11:-55dBm
    - 11ax HE20\_MCS0:-95dBm, 11ax HE20\_MCS11:-63dBm
    - 11ax HE40\_MCS0:-92dBm, 11ax HE40\_MCS11:-60dBm
    - 11ax HE80\_MCS0:-89dBm, 11ax HE80\_MCS11:-58dBm
    - 11ax HE160\_MCS0:-85dBm, 11ax HE160\_MCS11:-55dBm
  - 2.4GHz:
    - 11g 6Mbps: -97dBm, 11a 54Mbps:-79dBm
    - 11n HT20\_MCS0:-97dBm, 11n HT20\_MCS7:-78dBm
    - 11n HT40\_MCS0:-95dBm, 11n HT40\_MCS7:-75dBm
    - 11ac VHT20\_MCS0:-96dBm, 11ac VHT20\_MCS11:-67dBm
    - 11ac VHT40\_MCS0:-94dBm, 11ac VHT40\_MCS11:-64dBm
    - 11ax HE20\_MCS0:-96dBm, 11ax HE20\_MCS11:-64dBm
    - 11ax HE40\_MCS0:-93dBm, 11ax HE40\_MCS11:-61dBm
- Wireless Function: Enable/Disable Wireless Radio, WDS Bridge, WMM, Wireless Statistics
- Wireless Security: 64/128-bit WEP, WPA/WPA2, WPA-PSK/WPA2-PSK encryptions

# Specifications

## Software

- Quality of Service: Device and Application Prioritisation
- WAN Type: Dynamic IP/Static IP/PPPoE/PPTP(Dual Access)/L2TP(Dual Access)/BigPond
- Management: Access Control, Local Management, Remote Management
- DHCP: Server, DHCP Client List, Address Reservation
- Port Forwarding: Virtual Server, Port Triggering, UPnP, DMZ
- Dynamic DNS: DynDns, NO-IP, TP-Link
- Access Control: Parental Controls, Local Management Control, Host List, White List, Black List
- Firewall Security: DoS, SPI Firewall, IP and MAC Address Binding
- Protocols: IPv4, IPv6
- USB Sharing: Supports Samba(Storage)/FTP Server/Media Server
- Guest Network: 2.4GHz Guest Network, 5GHz Guest Network

## Others

- Certification:  
CE, FCC, RoHS
- System Requirements:  
Microsoft Windows 98SE/NT/2000/XP/Vista™/7/8/8.1/10, MAC OS, NetWare, UNIX or Linux  
  
Internet Explorer 11, Firefox 12.0, Chrome 20.0, Safari 4.0, or other Java-enabled browser  
  
Cable or DSL Modem  
  
Subscription with an internet service provider (for internet access)
- Environment:  
Operating Temperature: 0°C~40°C (32°F ~104°F)  
Storage Temperature: -40°C~70°C (-40°F ~158°F)  
Operating Humidity: 10%~90% non-condensing  
Storage Humidity: 5%~90% non-condensing
- Package Contents  
Wireless Router Archer AX6000  
  
Power Adapter  
  
RJ45 Ethernet Cable  
  
Quick Installation Guide



For more information, please visit

<http://www.tp-link.com/products/details/Archer-AX6000.html>

or scan the QR code left

Attention: This device may only be used indoors in all EU member states and EFTA countries.

Specifications are subject to change without notice. All the brands and product names are trademarks or registered trademarks of their respective holders.

\*Maximum wireless signal rates are the physical rates derived from IEEE Standard 802.11 specifications. Actual wireless data throughput and wireless coverage are not guaranteed and will vary as a result of network conditions, client limitations, and environmental factors, including building materials, obstacles, volume and density of traffic, and client location.

\*Use of MU-MIMO and 1024-QAM requires clients to also support those functions.

\*A basic TP-Link HomeCare™, powered by Trend Micro™, package is included for 3 years from date of activation at no additional cost. It includes Parental controls, Quality of Service, and Antivirus. Deactivation of HomeCare™ will disable certain controls and protections. For a complete list of HomeCare™ functions, go to [www.tp-link.com](http://www.tp-link.com).

©2020 TP-Link