

CLARIUS[®]

ANPR Cameras

ANPR (Short Range)

HD/IP MX ANPR Camera

The compact and lightweight range of Clarius ANPR Cameras use the latest LED technology to deliver a new standard of plate reading. The cameras have been designed to be efficient, economic and technically appealing to installation engineers. Using the latest Sony sensor technology for noise reduction and infra-red sensitivity, the Clarius cameras capture crisp infra-red images of retro-reflective license plates. The overview camera module captures corresponding contextual images of vehicles both in daylight and in challenging light conditions.

The Clarius's two internal camera modules are fitted with motorized zoom lens giving flexibility of capture range from 5-25m making it suitable for access control at site entrances or for gantry mounting scanning high-speed traffic.

With a 2MP sensor and a resolution of 1920 x 1080P, the camera provides wide lane ANPR coverage of up to 7m*.

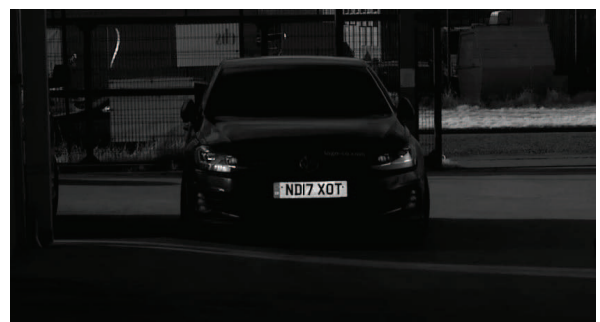
The lightweight cameras utilise a polycarbonate front cover fitted with removable IR diffusers for use at read distances of less than 17m. The diffuser spreads the beam of IR light into a elliptical format which then evenly illuminates the whole field of view resulting in much better ANPR performance.

A GORE™ valve for pressure equalisation and moisture expulsion complement the Clarius advanced technical design features.



FEATURES

- Highway traffic
- Free-flow parking control
- Site security control / Monitoring
- Barrier / Access control
- Mobile ANPR



Pulsed IR LED's with advanced filtering & diffuser technology produce clear images in all conditions

PRODUCT CODES

AI-8S Clarius HD Dual Zoom ANPR/IP MX Camera 850nm

AI-9S Clarius HD Dual Zoom ANPR/IP MX Camera 940nm

AI-8S-P Clarius HD Dual Zoom ANPR/IP PoE MX Camera 850nm

AI-9S-P Clarius HD Dual Zoom ANPR/IP PoE MX Camera 940nm

SPECIFICATIONS

ANPR Recognition range	5-25m / 16-82ft
LENSES	ANPR: 12-40mm motorised zoom Colour overview: 5-50mm motorised zoom
SENSORS	ANPR: Sony 1/1.8" IMX265 Global shutter 2MP Sensor Colour overview: Sony 1/3" IMX290 Sensor
RESOLUTION	1920 (H) x 1080 (V) or 1280 (H) x 720 (V) configurable
MIN ILLUMINATION	ANPR: 0.001 Lux @ F1.2 Colour overview: 0.01 Lux @ F1.2
SHUTTER SPEED	ANPR camera: 1/500 - 1/2500 sec
VIDEO OUTPUT	ONVIF 2.4
SUPPORTED PROTOCOL	TCP/IP, UDP, RTP, RTSP, RTCP, HTTP, DNS, DDNS, DHCP, FTP, NTP, PPPOE, SMTP, UPNP
SD CARD	128GB Dual SD card option
ILLUMINATION	4x Osram high power IR LEDs with separate lenses
IR WAVELENGTH	850nm or 940nm (other wavelengths available)
IR DIFFUSION	Low light absorption elliptical LED diffuser
IR ILLUMINATION ANGLES	2 Diffuser options to match FOVs
INPUT VOLTAGE	12-24V DC or PoE option
POWER CONSUMPTION	8.5 max
CURRENT CONSUMPTION	0.35A@24V, 0.7A@12V
INGRESS PROTECTION	IP67
RATING	
OPERATING TEMPERATURE	-20° to +60°C
STORAGE TEMPERATURE	-20° to +70°C
OPERATING HUMIDITY	85% RH
MOUNTING	Standard 4" (101.6mm) PCD fixing point
BRACKETS	Various mounts available
DIMENSIONS	180mm x 60mm x 200mm (W x H x D) including sunshield
WEIGHT	1.5Kg

