



FIRE & SECURITY



EPA STD SS

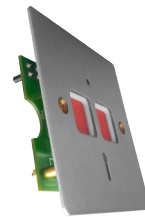
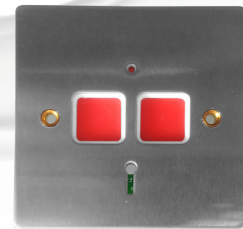
Stainless Steel Flat Plate Panic Button

The original electronic Hold-Up Device is now available with a stainless steel flat plate. This is a flush fitting which allows the device be mounted in a standard UK gang box, thanks to its flat face and recessed buttons.



**GRADE 3
COMPLIANT**

- 8 Terminals
- Double Push
- Flush Fitting
- Stainless Steel
- Fit a single gang backbox
- Key Resettable
- LED Indicator
- Self Latching
- Front Plate Size 85 x 85 x 1mm



Connections	8 PCB Terminals	Output Option	N/O or N/C
Operation Method	Dual Push Button	Temperature Range	-15° C to +40° C
Material	ABS / Stainless Steel	Tamper	RFMS (Rear Tamper)
Dimensions mm	85 x 85 x 16	Reset Method	Key
PA Output	N/O or N/C	Colours	Stainless Steel
Voltage Range	12v DC	Standards	EN50131-1 Grade 3 & PD6662:2010
Current	45mA @ 12Vdc	Environmental Class	II



FireBrand — **2Y-LINK** — CQR MAXIMAL

CQR Fire & Security
 125 Pasture Road, Moreton, Wirral, CH46 4TH, UK



Sales: 0151 606 1000 Tech: 0151 606 6311 www.cqr.co.uk info@cqr.co.uk