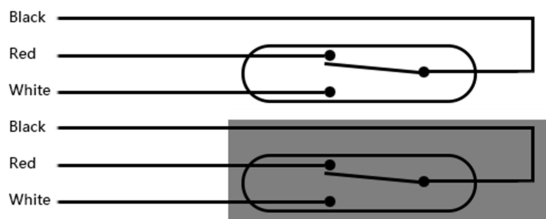
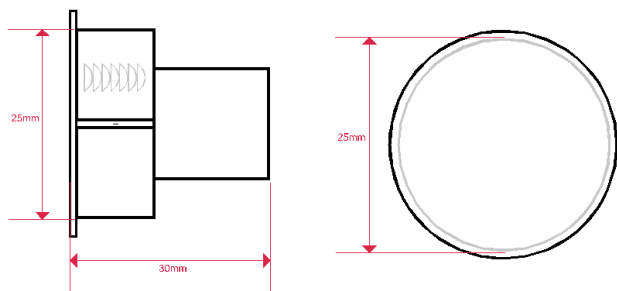
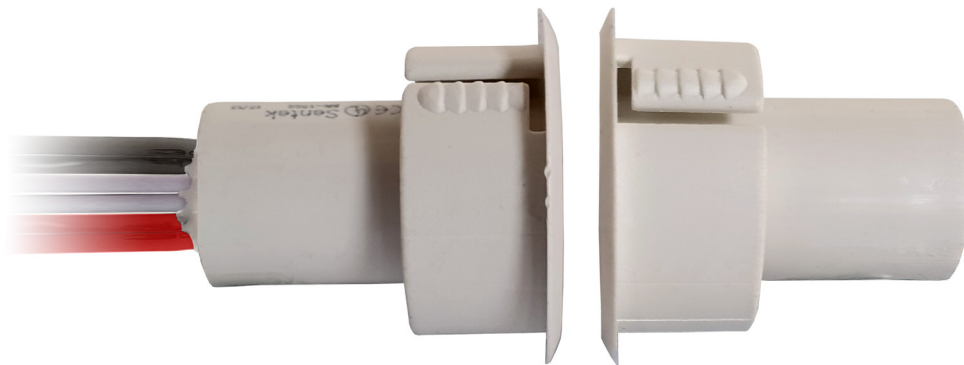


# Twin Reed Contact

Designed specifically for metal construction doors requiring Access Control or Intruder Detection monitoring.

A flush mounting, pre-wired magnetic contact with two independent changeover outputs. Normally Closed or Normally Open upon removal of the magnet.



- 25mm diameter
- 2 x SPDT contact type
- Operating gap 30mm
- Pre Wired
- EN50131 Grade 1



## Product codes

Code	Description
FC511/WH/2	Twin Reed 25mm Flush Contact

## Technical data

Contact type:	COM * 2 [SPDT * 2]
Installation:	Flush mounting
Operating gap:	≥30mm
Max. switching voltage:	100V DC/AC
Max. switching current:	0.2A
Operating load:	3W
Working temperature:	-20~80°C
Working life:	>100000
Connection type:	350mm 1007/22#AWG
Material:	ABS
Colour:	White

rev. 1-11/2019



[www.cqr.co.uk](http://www.cqr.co.uk)

[info@cqr.co.uk](mailto:info@cqr.co.uk)

Sales: +(0)151 606 1000 Tech: +(0)151 606 6311

CQR Security Ltd, 125 Pasture Road, Moreton, Wirral, CH46 4TH, UK

