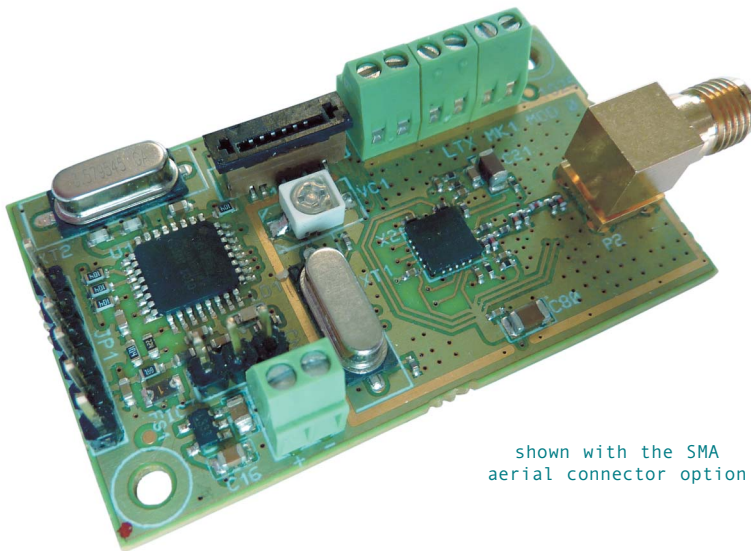


# LTX

## Low power UHF transmitter module



shown with the SMA  
aerial connector option

### OEM 4-zone SRD transmitter module

The LTX transmitter is a low power SRD transmitter intended to be used in applications that require radio alerts on demand from a user or automated by the configuration software.

Frequency can be programmed from 433MHz - 460MHz\* and power output can be varied from 0dBm - 10dBm. Standard Scope radio protocol is transmitted direct to Rx devices.

The LTX unit can be configured with the optional programming kit comprising of a dedicated interface cable (USB to board header) and PC software.

Each of the four inputs can have its own configured message along with a Reset message, low battery message and a battery shutdown message.

\* Subject to licensing constraints of individual countries

### features

The LTX transmitter has 4 dry-contact inputs which can be configured Normally open, Normally Closed or Toggle with multiple repeats and configurable repeat timer.

- Frequency Programmable  
433MHz - 460MHz
- Variable power output (0dBm - 10dBm)
- Can be powered by external DC source of between 4 & 12 V or 3 V internal source
- Test call function
- 10mW (max) output power
- Available with either a SMA aerial connector or fitted wire aerial

### Specification

**Power Supply:**

**Voltage:**

4-12V ext. DC source or 3V DC internal source)

**Current:**

Transmitting: <40mA  
Sleep mode: <20uA external source  
>5uA internal source

**Temperature:**

**Operating:**

-20 to 55 degrees Centigrade

**Storage:**

-40 to 80 degrees Centigrade

**Transmitter:**

Freq range 433 - 460 MHz  
Frequency accuracy: +/- 1.5KHz max (over operating temperature range)  
Power output 10mW max  
Channel spacing 12.5KHz  
Tx baud rate 512/1200  
Transmit protocol POCSAG

**Antenna Options:**

SMA connector or fitted wire aerial (seperate versions)

**Dimensions:**

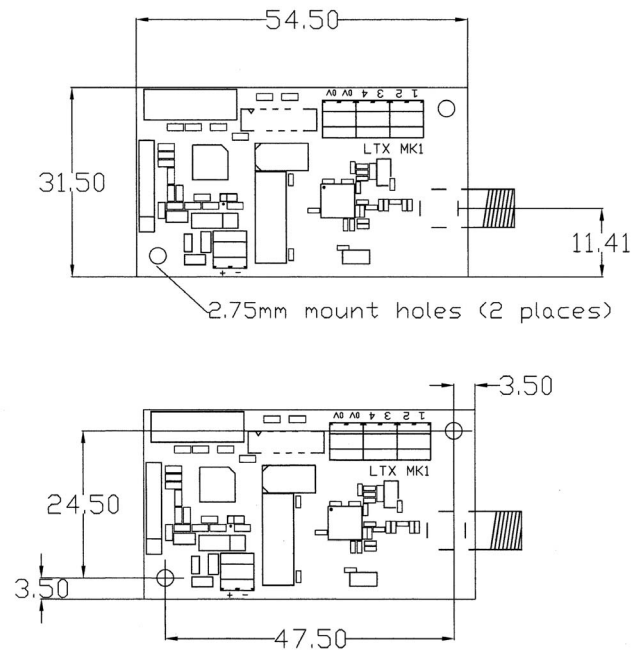
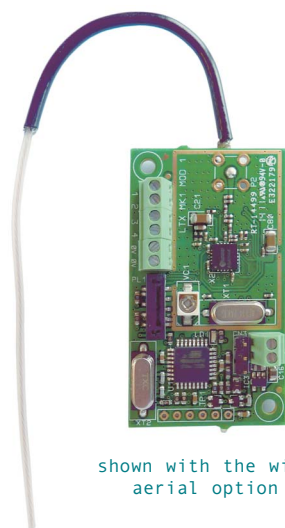
54.5 mm x 31.5 mm (excluding antenna mount if present)

### Trigger Input Specification

- Configurable message for each contact (up to 21 characters)
- Can be configured as Normally Open, Normally Closed or Toggle [1]
- Repeat enabled (up to 4 for each event)
- Repeat time can be configured (5 - 255 secs in 5 second steps)
- Test calls repeat messages up to 18 hours
- Reset message (up to 21 chars)
- Low Battery message (up to 21 chars)[2]
- Battery Shutdown message (up to 21 chars)[3]
- Contact response time = 10mS min, 15mS max (contacts cannot be used as fast pulse detector)

1: Normally Open is recommended for Low Power Long life Applications (Battery). On toggle mode no repeats are transmitted.  
2: When a low battery is detected Transmitter output power is automatically reduced in order to maximise battery life  
3: When the battery can no longer support the Transmitter a battery shutdown message is transmitted.

The firmware can be modified to suit customer requirements. Please consult Technical Sales for a quotation.



### Compliance

R&TTE directive 1999/5/EC  
EMC Directive (89/336/EEC) EN 301 489-1 V1.4.1  
Low Voltage Directive (73/23/EEC) EN60950 : 2000  
ETSI EN 300 220-1 V2.1.1 (2006-04)

Copies of the Declaration of Conformity covering this product can be obtained from Scope

Note: For OEM applications, it is the end manufacturer's responsibility to ensure that their final product continues to meet all relevant approvals and EU Directives, and Scope will not accept liability for any subsequent non-conformances in this respect.



Scope Communications UK Ltd  
Quantum House  
Steamer Quay  
Totnes, Devon, TQ9 5AL  
England

Tel: +44 (0)1803 860700  
Fax: +44 (0)1803 863716  
Website: www.scope-uk.com  
Email: sales@scope-uk.com