

Clarius Star LED Illuminator

The Clarius Star is a high-quality LED floodlight designed for all outdoor lighting applications.

Modern aesthetics specifically designed to cater for the high-end residential and commercial markets and an adjustable bracket with the ability to pan and tilt help the Clarius Star stand out in the marketplace.

With a two year warranty and a 2500+ lumen output, it is the ideal replacement for older 250/300W halogen floodlights, as well as being environmentally friendly.

Features include:

- Adjustable bracket to tilt and pan light
- Adjustable detection range between 4m to 12m, with 120° detection angle (Floodlight with PIR Sensor)
- Time on adjustable between 10 seconds and 10 minutes
- Pre-wired with high quality 1m cable
- Luxeon Cool white (5700k) LEDs
- Vandal-proof polycarbonate diffuser
- Average life expectancy of over 5 years
- IP65 rated



PRODUCT CODES

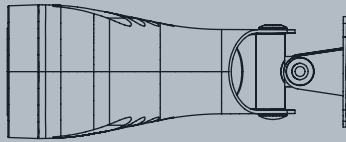
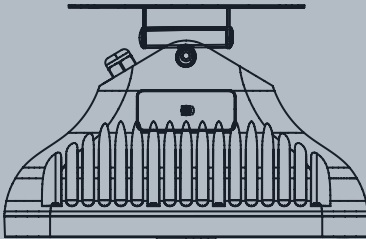
VCS-20 20W Floodlight without PIR

VCS-20-PIR 20W Floodlight with PIR

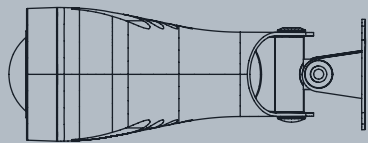
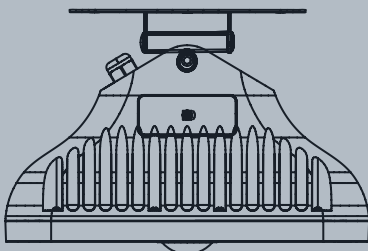
FEATURES

	VCS-20	VCS-20-PIR
DESCRIPTION	LED Floodlight without PIR (20W)	LED Floodlight with PIR (20W)
HOUSING COLOUR	Black	Black
LENS	Frosted	Frosted
LUMENS	2500 +	2500 +
VOLTAGE	170-240VAC 50Hz	170-240VAC 50Hz
IP RATING	IP65	IP65
ADJUSTABLE OUTPUT	✓	✓
DETECTION CIRCUIT	N/A	Passive Infra-Red (PIR)
PIR ANGLE	N/A	120°
PIR RANGE	N/A	12m
ACTIVATION TIME	N/A	10 Secs - 10 Mins
MOUNTING BRACKET	✓	✓
OVERRIDE OPTION	N/A	✓
WEIGHT	0.9Kg	0.9Kg
DIMENSIONS	241mm (w) x 61mm (H) x 153mm (D)	241mm (w) x 61mm (H) x 161mm (D)

20W Floodlight without PIR



20W Floodlight with PIR



GENERAL

ELECTRONICS	High efficiency surface mount high power LUXEON LEDs
CONSTRUCTION	Robust high quality aluminium housing
FRONT WINDOW	Frosted polycarbonate high transmission
FINISH	Black powder coat
POWER CABLE	1m
PHOTOCELL	Adjustable 20 -70 Lux
ILLUMINATION	Adjustable 10% - 100%
OPERATING TEMPERATURE	-30° to 50°C (-86° to 122°F)
WEIGHT	0.9kg (1.9lbs)
MOUNT	Powder coated stainless steel wall mount
DIMENSIONS	153 x 61 x 241mm (5.02" x 2.40" x 9.48")

ELECTRICAL

INPUT VOLTAGE	170-240 VAC 50Hz
INPUT CURRENT	0.09 Watts
CONSUMPTION	20W

OUTPUT

LUMEN O/P	2500+ lm
WAVELENGTH	Visible (400-750nm)
COLOUR TEMP	5700K
COLOUR RENDERING INDEX	70

CERTIFICATIONS

WEEE	Waste electrical & electronic equipment european directive 2012/19/EU	
RoHS	Restriction of hazardous substance european directive EU 2015/863	
CE-EMC	EN 61547 EN 55015 EN 62493 EN 61000	(Lighting-Immunity) (Lighting-Emission) (Lighting-EMF) (EMC)
CE-LVD	EN 60598-1 EN 60598-2-1	(Luminaires-General) (Luminaires)
SAFETY	EN 62471	(LED safety)
ENVIRONMENTAL	IEC/EN 60529 N2580, EN 50581	IP65 (RoHS), REACH