

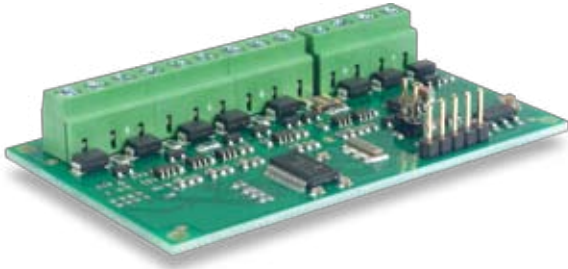


catalogue 2010/2011
THE BUS PERIPHERALS

auxi™ / pontis™ / radius™ / imago™

Expansion module series **auxi**™

product code **KS1230000.300**



auxi dal latino significa **accrescere, aumentare, potenziare.**
auxi derives from latin means to increase, to potenziare.

Let's give power to the lares Control Panels and/or to the gemino GSM/GPRS Communicator by adding more Zones (inputs).

auxi enables to increase up to 5 (or multiples with multiple modules) the numbers of programmable inputs(outputs) of the **gemino** GSM/GPRS Communicators and of the **lares** intrusion Control Panels.

auxi configuration into the system is very fast, no need to configurate dip-switches or to assign them with relevant addresses: **auxi** will be automatically acquired by **gemino** or **lares** and identified univocally with its serial numbers that you can find impressed on the PCBA label.

Its dimension allow its insertion within a standard box DIN 503 for wall mounting or alternatively into the plastic box "slim" (Ksenia p/n KS17302000.010) with the possibility to insert up to 2 **auxi** or even into the metal cabinet (Ksenia p/n KS17401000.010) as expansion to the stand-alone version of **gemino**.

HOW TO PROGRAM

auxi is to be linked to **gemino** or **lares** through the serial bus **KS-BUS** at 4 wires and has 5 terminals which can be configurated as programmable inputs with End-of-line resistors or OC outputs (transistorized) at 500 mA. One of the five terminals can be configurated as analogic input 0-10Vdc (only with **lares** panels) while one of them as 0-10Vdc analogic output. (only with **lares** panels).

auxi incorporates a non-volatile memory of the terminal programs which limits to 1000 times the number of re-programmings of the terminals in order to guarantee their correct functioning.

The programming of the terminal functions (either input or output) are implemented during the programming of **gemino** or **lares**.

perché auxi™ – why auxi™

- because with the same expansion module you can either increase the number of zones of the control panel or increase up to 10 the number of programmable inputs (outputs) of gemino
- because it is automatically and univocally configurable by means of its serial number: forget about having to adjust dip-switches or assign addresses to them
- because it is very small and therefore can be installed inside the wall within a standard DIN503 box
- because all its 5 terminals can be programmed as Open Collector outputs up to 500 mA each
- because all its 5 terminals can be programmed as inputs with EOL resistors
- because 1 of its 5 terminals can be programmed as analogic input 0-10Vdc (only for lares control panels)
- because 1 of its 5 terminals can be programmed as analogic output 0-10Vdc (only for lares control panels)

TECNICAL DATA

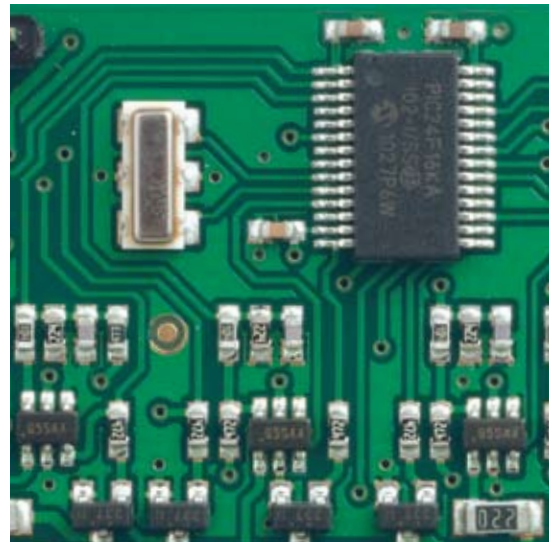
- Voltage: 13,8Vdc
- Current consumption: 20mA (excluding terminal P and outputs)
- 1 analogic input 0 – 10Vdc
- up to 5 alarm inputs with programmable EOL
- 1 analogic output 0 – 10Vdc, 20mA
- up to 5 Open Collector outputs of 500mA each
- Power terminal 1,5A protected by a self-restorable thermal fuse
- PCBA dimension: mm 75 x 45 x 20

PARTS INCLUDED

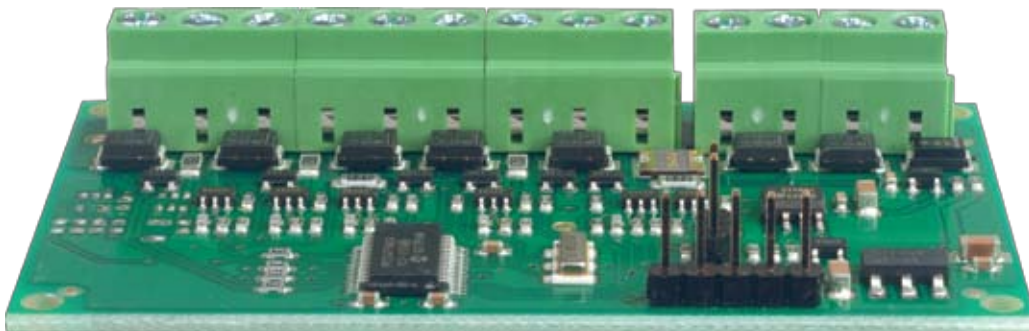
- 1 PCBA modul KSI2300000.300
- 4 sustainers for metal cabinet's mounting
- 1 Installation Manual in ITA/EN

CERTIFICATIONS

Europe / CE



detail of auxi™ I/O expansion module



PSTN telephone interface **pontis™**

product code **KSI4200000.300**

pontis is the PSTN communication board for **lares** Panel series. Thanks to its compact size (60 x 75mm) can be installed directly in the same box with the **lares** Control Panel and connect to lares board via the 4 wire KS-BUS. Despite of other burglar telephone interface system, **pontis** is built with a powerful chip modem, managed by an high speed DSP-IC (digital signal processor). *Thanks to this solution, **pontis** can manage remotely the panel (telemonitoring) with a standard modem (without purchasing a dedicated modem) with a speed up to 14400 bps. With **pontis** board, it is possible to program and manage your lares panel only with the PSTN lines.*

Using **pontis** board it is possible to activate the dialer function of **lares** Control Panel: it is be possible to send alarm, fault condition or any other status of the panel using pre-recorded voice messages on the panel; **pontis** can be used with the GSM communicator **geminobus**: as a priority communication channel, as a back-up of GSM or in parallel to it, managing two calls at the same time (one over GSM and one via PSTN). Moreover it is possible to manage your panel calling the board: a voice menu will help you on choosing scenarios, bypass or un-bypass zones and activate outputs.

*Finally **pontis** communicator permits to send alarm to monitoring station via Contact ID or SIA protocol.*

Programmable options are available on **pontis** communicator like as monitor PSTN lines and second call option that permit to manage other telephone devices connected to the lines, like faxes.

CERTIFICATIONS

Europe / CE

Europe / ETSI ES 203 021 parti 1,2 e 3 (ex. TBR021)

HOW TO PROGRAM

Programmable parameters of **pontis** are directly managed by **lares** control panel

TECNICAL DATA

- Voltage: 12Vdc
- Current consumption : 100mA (max)
- DTMF selection
- Temperature range: +5 to 40°C
- PCBA size (W x H x D): mm 75 x 60 x 15
- Weight: 50g

PARTS INCLUDED

- 1 PCBA module KSI4200000.300
- 4 sustainers for metal cabinet's mounting
- 1 Installation Manual in ITA/EN

HOW TO ORDER

Ksenia finished product **KSI420000.300**

Indoor siren **radius™**

product code **KSI6100000.310** (universal)
KSI6101000.310 (only for BUS KS)



The **radius** self-powered outdoor siren is actually a **professional (acoustic & optical) Sounder** which shows a unique and exclusive design, extremely slim (max. 37mm thick) associated with a modern technology aimed to combine the best possible performances with the maximum energy saving: very high sound pressure, power LED Alarm Light which also acts as **emergency light in case of main power's black-out**. The siren is fully controlled by a microprocessor which checks the different siren status and sends the selected signal.

radius, like as the **ergo** Keypad, has been designed to be fully flexible even from a chromatic stand point of view to be easily and superbly integrated in any sort of interior design: as a matter of fact, its design allows the end user to take advantage of 4 different colours, i.e. white, metallized grey, red and black.

With regard to its function, **radius** is available with 2 inputs to activate the acoustic and optical signals, which thanks to the programming of the inputs polarities are easy to be linked to any Control Panel. The first time you power up it, the siren reads all the inputs and associates them to the correct polarity and stand-by status with no need to program them manually, saving the programming itself on a non-volatile memory; either they are inputs with positive or negative command, or with or without intrinsic security (command to miss or to give), **radius** links any of them with the associated function. The battery is steadily monitored and its malfunctioning or discharge immediately signaled to the Control Panel. On top of the automatic protection for preventing wire-cutting actions, **radius** is protected by 2 tamper switches against cover opening and against removal from the wall. The housing is made of very high quality anti-UV polycarbonate.

In the KS-BUS communication's version (only for **Iares** Control Panels) the siren is equipped with a precision temperature sensor to display the indoor temperature in the **ergo** Ksenia Keypad.



detail of radius™ colored interchangeable mask



radius™ in black

CERTIFICATION

Europe / CE

Europe / EN50131-4 grade 3

PROGRAMMING

In the KS-BUS version, **radius** is linked to the **lares** Control Panel by means of the 4-wires serial KS-BUS and it can be easily programmed from the Control Panel.

TECHNICAL DATA

- Ultra-modern design with additional Emergency Light function.
- Solid PC UV-resistant housing (min. 2 mm. thickness)
- Interchangeable in 4 the different Ksenia colors
- 1 input for the main 3 W power LED
- Autoconfiguration of input polarity
- High Sound Pressure Piezoelectric Buzzer (>100 dBA at 1m.)
- Integrated Temperature Sensor (radius-bus version only), precision $\pm 0,5^{\circ}\text{C}$
- Back-up Battery
- Temperature Range: from $+5^{\circ}$ to $+40^{\circ}\text{C}$
- Dimensions (W x H x D): 100 x 140 x 37 max. mm
- Weight (with Battery): g. 300

PARTS INCLUDED

KSI6100000.310 * (universal)

oppure KSI6101000.310 (KS-BUS)

1 Siren complete with PCBA and battery

4 sets of 4 coloured masks

1 Quick Installation Guide in ITA/EN

HOW TO ORDER

KSI6100000.310 * (universal)

oppure KSI6101000.310 (KS-BUS)

Outdoor Siren **imago™**

product code **KS16300000.3XX*** (Universal) **KS16301000.3XX** (BUS-KS)

(*) the code suffix **3XX** indicates the different color option, e.g. **.318** (white cover with red bottom), etc

06 THE BUS PERIPHERALS / auxi / pontis / radius / imago



The **imago** self-powered outdoor siren is actually a professional (acoustic & optical) Sounder which shows a unique and exclusive design, extremely slim (max. 6 cm thickness) associated with a state-of-the-art technology aimed to combine the best possible performances with the maximum energy saving : very high sound pressure, power LED Alarm Light and 2 LED for auxiliary signaling. The siren is fully controlled by a microprocessor which checks the different siren status and sends the selected signal.

imago is available with 3 inputs to activate the acoustic and optical signals, which thanks to the programming of the inputs polarities are easy to be linked to any Control Panel. The first time you power up it, the siren reads all the inputs and associates them to the correct polarity and stand-by status with no need to program them manually, saving the programming itself on a non-volatile memory; either they are inputs with positive or negative command, or with or without intrinsic security (command to miss or to give), **imago** links any of them with the associated function. The battery is steadily monitored and its malfunctioning or discharge immediately signalized to the Control Panel. On top of the automatic protection for preventing wire-cutting actions, **imago** is protected by 2 tamper switches against cover opening and against removal from the wall. Moreover, in spite of its very slim profile, it hides a strong metal undercover against smashing. The housing is made of very high-quality anti-UV polycarbonate and its mechanical characteristics are meant to guarantee a long time resistance against all weather conditions (IP43). In the KS-BUS communication's version (only for **lares** Control Panels) the siren is equipped with a precision temperature sensor to display the outdoor temperature in the **ergo** Ksenia Keypad.

Compass Opening for the easiest mounting and installation with strong 6MM inox Steel Bolts

All imago plastic parts are in high-quality/high thickness Polycarbonate with Anti-UV protection and IP43 protected against the worst Weather Conditions.





It is possible to choose imago™ among 3 different colors for the transparent bottom. Even the front Cover is available in different colors and can be customized on request by screen-printing the Installer logo.



CERTIFICATION

Europe / CE

Europe / EN50131-4 grado 3

Italia / IMQ (ongoing)

PROGRAMMING

In the KS-BUS version, **imago** is linked to the lares Control Panel by means of the 4-wires serial KS-BUS and it can be easily programmed from the Control Panel.

In the stand-alone version, **imago** is equipped with 3 programming Jumpers:

- *one for choosing max. Alarm Duration (3 or 10 minutes)*
- *one for Tamper Exclusion (in case of siren opening, only the tamper relay is activated or even the Alarm functions sound and lights)*
- *one for Resetting the 3 inputs polarity programming.*

TECHNICAL DATA

- Ultra modern design with original and convenient rotating opening
- Solid PC UV-resistant housing (min. 3 mm. thickness)
- Front available in different chromatic solutions (various colors available)
- Transparent bottom Alarm input
- 1 input for the main 3 W power LED
- 1 input for the 2 high-efficiency signalling red LEDs
- Autoconfiguration of input polarity
- High Sound Pressure Piezoelectric Buzzer (120dBA at 1m.)
- Alarm Duration's Setting (3 or 10 minutes)
- Programmable Tamper Setting
- Battery Efficiency Control through a 500mA OC output
- Integrated Temperature Sensor (imago-bus version only), precision $\pm 0,5^{\circ}\text{C}$
- PCBA Sealing (Conformal Coating)
- Back-up Battery : 6Vdc-1,2Ah
- Temperature Range: from -30° to $+60^{\circ}\text{C}$
- Protection degree: IP 43
- Dimensions (W x H x D): 195 x 330 x 60 mm
- Weight (without Battery): Kg.1,200
- Weight (with Battery): Kg.1,500

PARTS INCLUDED

KSI6300000.3XX * (universal)

or **KSI6301000.3XX** (versione per BUS-KS)

() the code suffix 3XX indicates the different color option, e.g. .318 (white cover with red bottom), etc*

1 Siren complete with PCBA and metal undercover

2 sets 6 mm Dia. Bolts & Nuts

1 Quick Installation Guide in ITA/EN

HOW TO ORDER:

Ksenia finisehd product: see above – **alternatively is possible to order covers only** (e.g. **KSI6901000.340** only cover in beige color, or **KSI6901000.3X0** for color Y) - for details please refer to **Ksenia Price List**.



auxi™ / pontis™ / radius™ / imago™ sono stati progettati con le seguenti caratteristiche per ridurre l'impatto ambientale:

- Assenza di PVC
- Laminati per circuiti stampati senza piombo e bromo
- Basso assorbimento
- Imballo realizzato per la maggior parte con fibre riciclate e materiali provenienti da fonti rinnovabili

auxi™ / pontis™ / radius™ / imago™ has been designed and manufactured for the environment as follows:

- Absence of PVC
- PCB laminates free from Bromine and Lead
- Low adsorption
- Packaging realized mainly with recycled fibers and materials

© 2010 Ksenia Security srl

TUTTI I DIRITTI SU BREVETTI E MARCHI COMMERCIALI
SONO RISERVATI

Ksenia Security Srl si riserva il diritto di applicare qualsiasi modifica a quanto indicato nel catalogo in ogni momento e senza preavviso. Qualsiasi marchio registrato, marchio di servizio, marchio collettivo menzionato o utilizzato nel presente catalogo, è proprietà dei legittimi proprietari.

© 2010 Ksenia Security srl

ALL RIGHTS ON PATENTS & TRADE-MARKS ARE RESERVED

Ksenia Security Srl reserves the right to apply any changes to what shown in this catalogue at any time and without prior notice. Any trademark, service mark, collective mark used or mentioned in this catalog is property of their respective owners.



Ks Ksenia Security Srl / Centro Direzionale Primavera
via Nazario Sauro, 162 / 63039 S.Benedetto del Tronto, Italy
tel. +39 0735 751646 / fax +39 0735 652281
C.F. e P.iva IT 02027680442 / nr. REA AP-0191733

www.kseniasecurity.com / info@kseniasecurity.com

All Rights Reserved © 2010 Ksenia Security srl