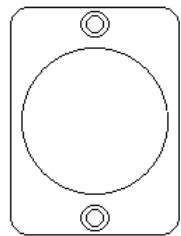
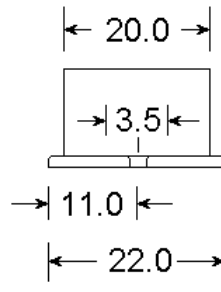
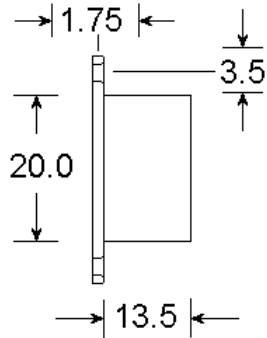


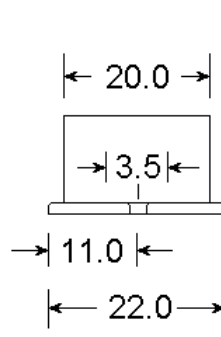
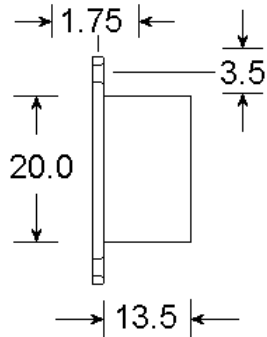
36.0

27.0



36.0

27.0



Magnet

1/. Reed <i>(Ser. Parallel)</i>	2/. EOL <i>(Series)</i>
1KR	1KR
2K2	2K2
4K7	4K7
4K7	2K2
4K7	6K8
See separate Sheet	
8K2	8K2



**Description:** Grade 2 - 5 Terminal Flush Contact Single Reed, pre-fitted pre-set resistors.

**Operating Gap:**  
14mm (Approx)

**Materials:**  
High Impact Polystyrene

**Magnet:**  
Ferrite or Alnico V

**Contact Material:**  
Rhodium

**Voltage Range:**  
1 – 100v DC  
125v AC Max

**Switching Current**  
500mA Max DC  
500mA Max AC

**Temperature Range:**  
-40°C - +50°C

**Resistor Combinations:**  
See Inset Panel  
*Call for options.*

**Colours:**  
White (No Suffix)  
Brown (Suffix B)

Fixing Screws Provided

Sealed against outside attack.

Can be used with just the reed switch and no resistors – connect the yellow wire and the red wire.

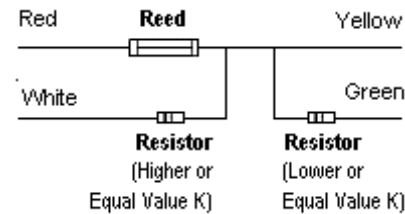
To include 1 resistor, twist the red & white wires together to link, then connect the yellow wire.

To include 2 resistors, twist the red & white wires together to link then connect the green wire.

Black and blue wires are the tamper loop.

The magnet side needs to be fitted approx. 14mm away from the reed side.

*Note this contact already meets the requirements of TS50131-2-6: 2004*



**KNIGHT**  
**PLASTICS LTD**  
email: [info@knightplastics.com](mailto:info@knightplastics.com)

Unit 1 Clydesmuir Rd. Ind. Estate  
Cardiff UK CF24 2QS

Tel: 0 (00 44) 29 20 48 81 29

Fax: 0 (00 44) 29 20 48 91 32

Drawing No: **PDA40 +RESISTORS**

Drawn: Chris Moorman

Date: 17/10/06

All units in mm  
Do not scale



The portrayed information is © Knight Plastics Ltd  
All cases of ™ Infringement will be persued.