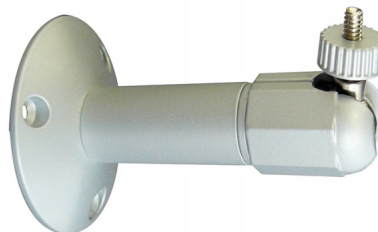


TECHNICAL DATA SHEET

BR-01S

Cable Managed Internal Camera Bracket



KEY FEATURES

- Ceiling/Wall Bracket
- Cable Managed
- Die-cast Aluminium Alloy

TECHNICAL DATA SHEET

TECHNICAL SPECIFICATION

Model Number	BR-01S
Maximum Load	10Kg
Colour	Silver
Fixing	3 Screws
Material	Die-cast Aluminium Alloy
Scan Angle	360
Tilt Angle	180
Cable Managed	Yes
Mount Type	Ceiling and Wall Mount
Length	149 mm
Weight	250g

Features and specification are subject to change for further improvement without any notice.