

Klaxon inferno mini

Installation guide

IMPORTANT INFORMATION BEFORE YOU START

- **The Read this manual carefully before starting the installation.**
- **Inferno is intended for professional use and should only be installed by competent installers.**
- **Do not connect the unit to supplies other than 12 V DC.**
- **The battery may need to charge for 20 minutes before the unit will function.**

Tools required: Screwdriver and Torx wrench for No T20 bolt size M4.

1) THE UNIT

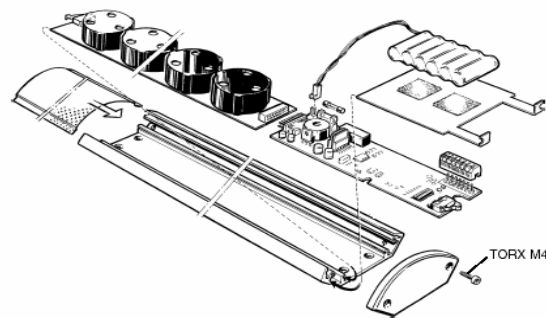


Diagram 1, The Inferno Mini unit

2) MOUNTING

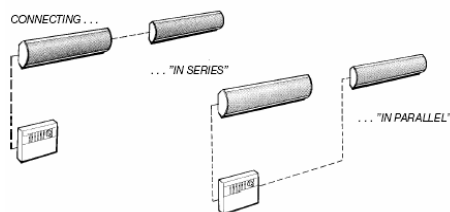


Diagram 2, Connecting in "daisy chain" or "star"

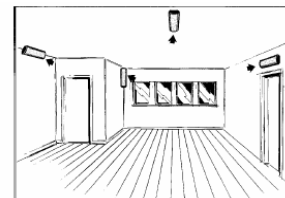


Diagram 3, Suggested mounting positions

Multiple units

Multiple units can be attached together to form either a semi circle (Dia. 4a) or a circle (Dia 4b). The Semi-circular unit can be mounted either on the wall or the ceiling. The circular version should be hung from a ceiling.

Screws for joining multiple units or mounting are not supplied.



Diagram 4a, Semi-circle, two units



Diagram 4b, Omni, four units

Klaxon inferno mini

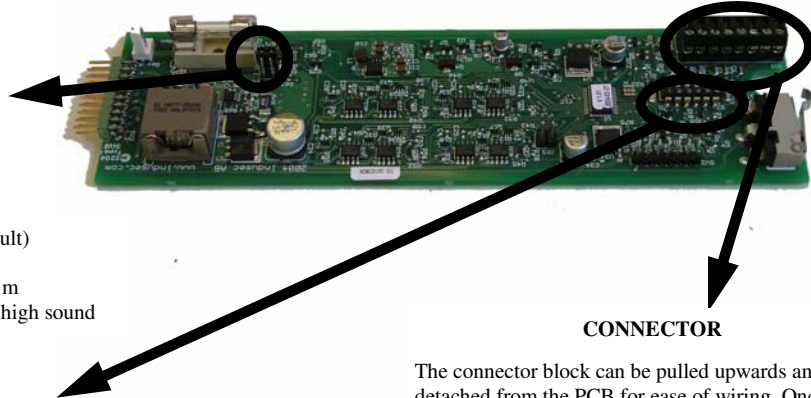
3) CONNECTION AND SETUP

SOUND LEVEL SWITCH



Jumper position:

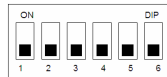
- 1 125 ± 1 dB(A) @ 1m (Default)
- 2 123 ± 1 dB(A) @ 1m
- No Jumper 127 ± 1 dB(A) @ 1m
WARNING! Very high sound



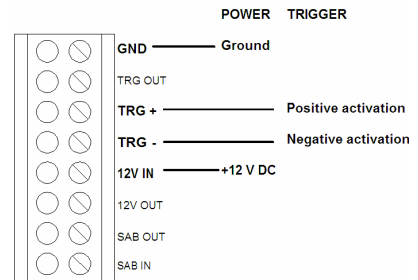
CONNECTOR

The connector block can be pulled upwards and detached from the PCB for ease of wiring. Once the connector has been wired, simply plug the assembled connector back onto the PCB

DIP SWITCH



1. Charging Indication
ON = A amber light will be lit when charging.
OFF = No indication when charging. (default)
2. Delay between received trigger signal and the alarm sounding.
ON = 30 s
OFF = 0 s (default)
3. Test Mode
ON = Test mode, four short different-pitched sound signals.
OFF = Normal mode (default)
4. Alarm Signal Length
ON = Infinite alarm
OFF = 3 min, after a new trig is needed (default)
5. Triggering Mode
ON = Latched trig, Pulse Mode
OFF = Direct trig (default)
6. Not used



- GND = Ground (0V or Supply -VE)
- TRG OUT = Could be used for triggering other devices.
- TRG + = Positive activation
- TRG - = Negative activation
- 12 V IN = Charge +12 V DC
- 12 V OUT = Battery output. NOTE! Power is directly from the battery. This could reduce alarm signal length.
- SAB OUT = Tamper out
- SAB IN = Tamper in

Options: Tamper loop

The tamper loop provides additional mechanical security protection. It does not affect the sounder activation process.

The tamper loop consists of a normally closed series connection that enters the unit at terminal 1, passes through a micro-switch at the end of the board before being routed via the CPU board through the middle connector to the speaker board and then through another micro-switch on the other end of the unit before looping back to terminal 2.

The loop can contain other normally-closed switches such as magnetic contacts or mercury tilt switches in the alarm set-up.

4) ASSEMBLING THE UNIT

Before applying power to the unit, ensure that Dip switch 3 is in the ON position.

1. Assemble the two PCB's and the battery. Be careful not to bend the connectors between the two boards.
2. Attach the power cable to the connector. Before the Connector is attached to the CPU circuit board, ensure that the power is off.
3. Power can now be applied.
4. Set Dip switch 1 to the ON position. An amber LED on the CPU circuit board should light up. (This switch can then be set in the OFF position to save on power consumption).
5. The unit can be triggered by either the 'TRIG (-)' or the 'TRIG (+)' on the Connector. The correct activation/TRIG signals are shown in the specification below.
6. A test is recommended if it has not been performed before, see section 5, Test.
7. Set the Dip switch 3 to OFF = Normal mode and then attach the grill and the two end caps.
8. The Inferno is now assembled and ready for use.

5) TEST

We recommend testing the unit either before mounting or during assembly. (Refer to section 4.)

If the Tamper loop is connected, the unit should be assembled before testing. The grill does not need to be replaced before testing.

If the battery is discharged the external 12V supply should be applied to the unit for 20 minutes before starting the test to allow the battery to charge slightly.

Test procedure:

1. Set Dip switch 3 to ON position.
2. Activate either of Trigger signals.
3. The unit should generate four short different-pitched sound signals indicating that the unit works.
4. Switch off the Trigger signal.
5. Set Dip switch 3 to OFF position. (Normal operation mode)
6. The test is complete.

The battery may require up to 24 hours before attaining a fully charged state.

Klaxon inferno mini

6) SPECIFICATION

Electrical Connections

| | |
|--------------------|-----------------------------------------------------------------------------------------------------------------------|
| Power Supply | 9 – 18 V DC, 150mA |
| Activation Signals | Trig (-): 0 – 0.5 V (10mA) Trig (+): 9 – 18 V (10mA) Latching Trig (Pulse Mode): Pulse length 150ms minimum |
| Cables | 0.25 – 1.0 square mm (AWG 22 – 18) |

Battery

| | |
|----------------------------|--------------------------------------------------------|
| | 12 V Ni-MH |
| Capacity | 600mAh (Sufficient for 20 minutes continuous alarm) |
| Charge time | The unit should be charged for 15 hours before use. |
| Standby w/o battery charge | 2 month |
| Life time | 3 years |

Fuse

4 AT

Sound Output

| | |
|------------------|-----------------------------------------------------|
| Coverage | Up to 100 cubic metres. (40 sq metres x 2.5 metres) |
| Sound output | 123 – 127 +/- 1db(A) @ 1m, user selectable |
| Output Frequency | 2-5kHz |

In the interest of improving internal design, operational function, and/or reliability, KLAXON SIGNALS LTD reserves the right to make changes to the products described in this document without notice. KLAXON SIGNALS LTD does not assume any liability that may occur due to the use or application of the product(s) or circuit layout(s) described herein.

Klaxon Signals Ltd Wrigley St Oldham OL4 1HW UK
E-mail: sales@klaxonsignals.com

Tel: +44 (0)161 287 5555 Fax: +44 (0)161 287 5511
www.klaxonsignals.com