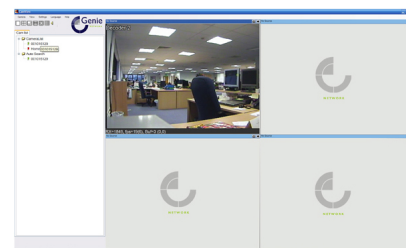


TECHNICAL DATA SHEET

NB309IR/B

Simple IP IR Bullet Camera



KEY FEATURES

CAMERA FEATURES

- 1/3" Sony Super HAD CCD
- Standard Resolution (420 TVL)
- Bodied Camera, Bullet Camera, Mini Dome Camera and Vandal Dome Camera Options
- Auto White Balance
- Auto Gain Control
- Auto Selection (PAL or NTSC)
- 15 Metres IR Illumination*
- IP66

* The Infra-red range assumes ideal conditions

NETWORK FEATURES

- Self-Networking
- MPEG-4 Compression
- Connect to Cameras from Anywhere
- Free Client Software
- 4 to 20 Simultaneous Users
- Adjustable Frame Rate
- Image Quality Settings (VGA / QVGA / QQVGA)
- Automatically Adjusts Image Quality by Network Bandwidth
- Bandwidth Settings
- Adjustable Bandwidth from 64 Kb to 1.5Mb
- Manual and Motion Detection Recording
- Multi Protocols
- Web Managed Password Protection



TECHNICAL DATA SHEET

- Supports Microsoft Windows XP or Above
- Minimum Hardware Requirements: Pentium 4 CPU 1.0 GHz or Higher
- ID Card Supplied with each Camera

OPTIONAL ACCESSORIES

CCTV Power Supply In-Line 12V DC 3.5A Regulated Switch Mode Power Supply Unit with Fixing Mount.

TECHNICAL DATA SHEET

TECHNICAL SPECIFICATION

Model Number	NB309IR/B
Image Sensor	Sony 1/3 Sony Super HAD CCD
Lens	3-9mm DC AI Varifocal Lens
Horizontal Resolution	420 TVL
Sensitivity @ 50IRE (F1.4)	0.5 Lux 0 Lux (With IR ON)
Scanning System	2:1 Interlace
Video Format	PAL / NTSC
Effective Pixels (H x V)	PAL: 500 x 582
Synchronisation	Internal
Frequency	PAL: Horizontal: 15.625 KHz
Shutter Speed	PAL: 1/50 ~ 1/1000000 Seconds
S/N Ratio	>48dB (AGC Off)
Automatic Gain Control	ON / OFF
Auto Electronics Shutter	ON / OFF
Back Light Compensation	ON / OFF
White Balance	ATW / AWB
Power Consumption	Max 3.8 W
Power Supply	DC 12V
Operating Conditions	Temperature: -10°C ~ +60°C Humidity: 30% ~ 80% RH
Dimensions (D x H)	73 x 134 mm
Weight	460g
Interface	Ethernet 10/100 Base-T / 100 Base TX Auto MDIX RJ-45
Protocols	IPv4 / HTTP / TCP / ICMP / RTSP / RTP / UDP / IGMP / RTCP / SMTP / FTP / DHCP / UPnP / ARP / DNS / PPPoE
Video Output	1 Composite (1 Vpp 75Ω BNC)
Video Compression	MPEG-4
Video Resolutions	PAL: 176 x 144 / 352 x 288 / 720 x 576
Video Frame Rate Range	PAL: 1 / 2 / 3 / 4 / 5 / 10 / 15 / 20 / 25 fps
Video Bandwidth	Configurable Between 64k to 1.Mbps
Video Management Software	Genie View Software Supports Web Viewing and Archiving (Up to 16 IP Cameras)
Video Hardware Requirements	Pentium 4 CPU 1.0 GHz or Higher DRAM 512 MB or Higher
Video Supported Operating System	Microsoft Windows XP SP2 or Above Framework 2.0
Users	Up To 5 Simultaneous Users (Unicast)
Alarm and Event Management	Events Triggered by Video Motion Detection. Notification by Email Upload JPEG Images to FTP

Features and specification are subject to change for further improvement without any notice.