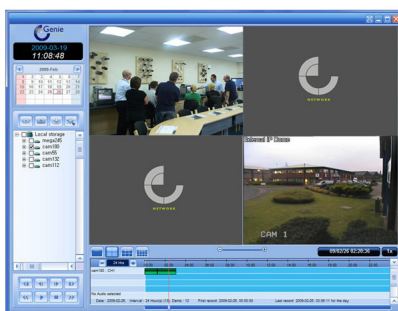


## TECHNICAL DATA SHEET

# NV100

## Network Video Server



## KEY FEATURES

- H.264 Compression
- Supports Encoder, Decoder or Duplex (One Box Solution)
- Maximum 25fps @ 720x576 & 30fps @ 720x480
- Full-Duplex Audio / Video Communication
- Two Way Audio
- Video Bandwidth: 32kbps ~ 4Mbps
- Serial Data Bandwidth: 2,400bps ~ 115,200bps (Multi-Protocols Built In)
- Dynamic IP Network Support
- Web-Based Live Monitoring
- Real-Time Monitoring, Recording and Playback with Dedicated CMS
- Power Over Ethernet (PoE) as Standard
- USB Port for Local Recording

# TECHNICAL DATA SHEET

## TECHNICAL SPECIFICATION

Model Number	NV100
Interface	Ethernet 10/100 Base-T
Connector	RJ-45
Protocols	TCP / IP / UDP / Multicast / DHCP / SMTP / HTTP / SNMP
Video Input / Output	1 Composite (1 Vpp 75Ω BNC)
Video Compression	H.264
Video Data Rate	32Kbps ~ 4Mbps
Video Resolutions	PAL: 720 x 576 / 720 x 288 / 352 x 576 / 352 x 288
Video Maximum Frame Rate	25fps (PAL)
Video Frame Rate Range	0.2 ~ 25fps (PAL)
Video Bandwidth	Configurable Between 32 Kbps and 4 Mbps
Video Loss Check	Yes
Video Motion Detection	Sensitivity Adjustment OSD Display
Standards	G.711u
Sample Rate	8Khz
Data Rate	64Kbps
Input	1 Line-in
Output	1 Line-out
Serial Port	Port 1: RS-232 (D-Sub 9Pin) Port 2: RS-422/485 (Terminal Block) Data Rate: 2400bps ~ 115200bps
Sensor Input	2 Ch: NC / NO Contact
Alarm Output	2 Ch: 1A 30V DC 0.5A 125V AC
Beep	1
System Status	LED OSD
Recording / Back Up	USB 2.0 Port
Genie Manager CMS	Live Monitoring Recording Search & Playback Backup
Power Source	DC 12V / 0.5A PoE (Power over Ethernet): 802.3af
Power Consumption	Max 5W
Dimensions (W x H x D)	134 x 35 x 125 mm
Weight	520g

Features and specification are subject to change for further improvement without any notice.