

ALERT POINT



STI ALERT POINT

The Alert Point is an aesthetically pleasing, robust and fully featured stand alone alarm system. Powered with a 9v pp3 alkaline battery, the Alert Point includes an integral sounder and resettable call point.

Manufactured from tough polycarbonate, the Alert Point is designed for use in industrial, commercial and retail applications as well as portacabins, car parks, churches and holiday parks. It also incorporates a tamper switch to prevent unauthorised removal or misuse.

Available in a variety of colours, the Alert Point can be used for a wide variety of applications such as Fire, Intruder, Panic, Evacuation, Assist or General alarm.

HOW IT WORKS

Once activated the Alert Point will emit a 102 dB alarm (at 1m), an activation flag drops in to view and the built in LED facility flashes red. Any external connected devices will be activated. The Alert Point can be easily reset with a special key, ensuring that the unit is quickly operational again. An override facility can silence the alarm until the Alert Point can be reset.

PROTECTING YOUR PREMISES

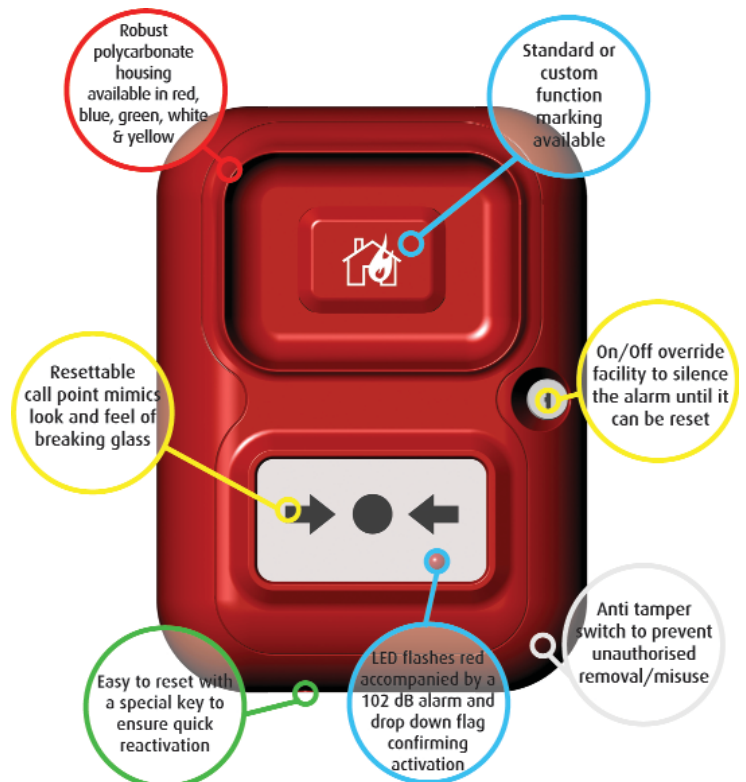
The Alert Points can be interconnected and have the ability to monitor each other to create a network of protection.

A 12/30 V dc external power connection is incorporated in the Alert Point to support external devices such as sounders and strobes.

With an easy, 4 screw, wire-free installation, this truly versatile product is the ideal solution for establishments that have a requirement for a simple, but effective alarm system.

FEATURES and BENEFITS

- Stand alone, self contained alarm system. No wiring involved, simple 4 screw installation, protecting personnel and property within minutes
- Battery powered (incorporates 12/30V dc facility), 9V PP3 supplied
- Robust polycarbonate housing, can take the severest of knocks
- Integral resettable call point, simple key to reset, no broken glass or parts to replace
- Visible warning flag & flashing LED, for quick activation identification
- Variety of sounder tone, output and duration options. Select a tone that personnel can quickly identify with
- 102 dB integral sounder (at 1m), draws immediate attention
- System healthy, fault and alarm LED indication, to ensure your Alert Point is fully operational
- Low battery warning, provides an 15 month stand-by life.
- Can be linked to sounders, strobes, call points & detectors, provides an extra level of protection
- Can be interconnected and monitored, creates a network of protection
- Available in a choice of colours, to accommodate a variety of applications
- Standard or custom marking, that best fits your requirements

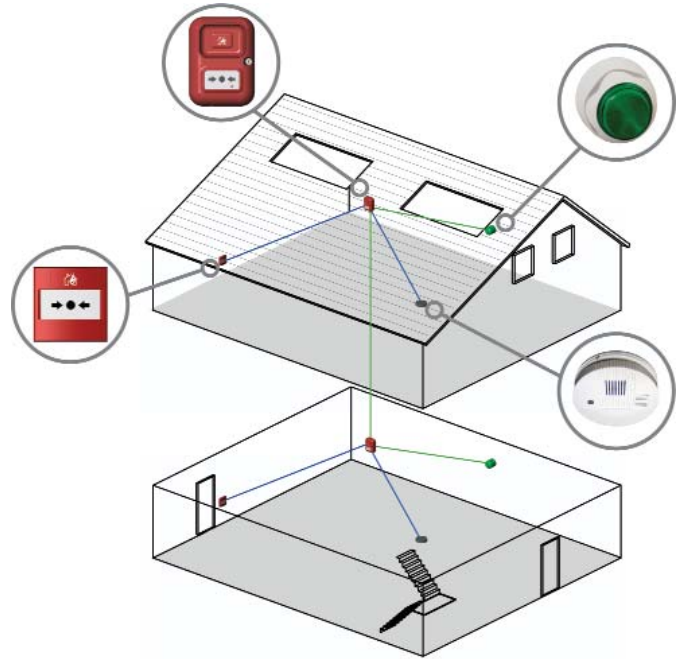


SPECIFICATION

▼ Technical Specifications

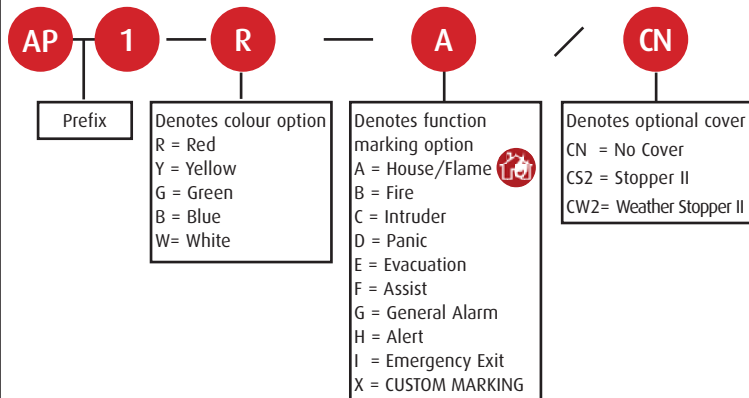
Housing Material	Polycarbonate
Electrical Contact Material	Silver Plated Brass
Power Source	9V PP3 Alkaline Battery
External Power Source	12 to 30 V dc
IP Rating	Indoor
Operating Temperature	0°C to 49°C
Installation Terminal	0.5mm to 2.5mm
Conductor Size	
Sounder Output (at 1m)	High - 102 dB Low - 95dB
Relay Output	30 V dc, 1 A
Standby Current	45 uA
Alarm Current (running from battery only)	28 mA - low volume 32 mA - High volume
Tones	7 (plus tamper tone)
Cable Entries	7
Weight	490 g
Dimensions	125 mm w x 170mm h x 58 mm d
Colours	Red, Yellow, Green, Blue & White

▼ Typical Application



▼ How to order

All Alert Point part numbers begin with AP-1 and contain 3 other characters E.G. AP-1-R-A/CN = Alert Point, red with House/Flame Logo and no cover.



Your Alert Point Part Number:			
Part Number	Colour Required	Function Marking Required	Cover Required
AP-1			

CUSTOM MARKING

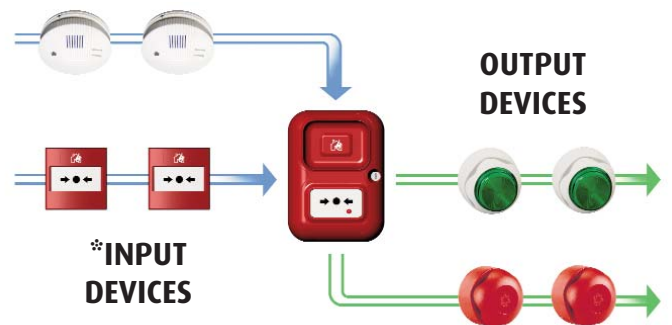
If custom marking is required, please print in the boxes below:-

EXAMPLE:- Your custom marking will appear here



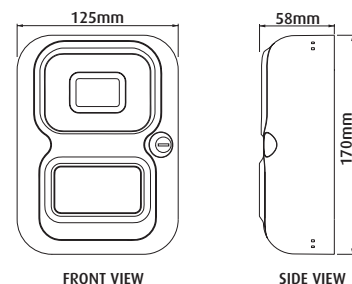
Maximum 20 characters (includes spaces)

▼ Supporting Input & Output Devices



*compatible with any detector which has a built in relay output option

▼ Dimensions



Safety Technology International (Europe) Ltd

Unit 49G Pipers Road • Park Farm Ind. Est. • Redditch • Worcestershire • B98 0HU • England
 Tel: 44 (0) 1527 520 999 • Freephone 0800 085 1678 (UK only) • Fax: 44 (0) 1527 501 999 • Email: info@sti-europe.com • Web: www.sti-europe.com
 Head Office • Safety Technology International, Inc. • 2306 Airport Road • Waterford • Michigan • 48327 • USA
 Tel: 001 248 673 9898 • Fax: 001 248 673 1246 • Toll Free: 0800 888 45TI (USA only) • Email: info@sti-usa.com • Web: www.sti-usa.com



AP Spec. Rev. 01/09 Printed in England

NEED SALES OR TECHNICAL SUPPORT? CALL FREEPHONE 0800 085 1678 (UK). T: +44 (0)1527 520 999