

WEATHER STOPPER II



FEATURES

- Constructed from tough clear polycarbonate
- Strong, durable cover to take even the severest of knocks
- Ideal for saline atmospheres
- Fits a variety of industry standard devices
- Available for flush or surface mounted products
- Supplied with a variety of cable entry gaskets
- Protects equipment against damage from dust and grime as well as water ingress
- Available in a variety of colours
- Cover backed by a lifetime guarantee against breakage in normal use
- Polycarbonate tested -40°F (-40°C) to 120°F (49°C)

▼ Weather Stopper II dimensions and technical information (STI 1250 & STI 3150)

STI WEATHER STOPPER II

Large weather proof cover to protect devices such as external call points.

Physically larger than the Weather Stopper, the Weather Stopper II is a tough, clear polycarbonate cover designed to protect manual call points and other devices where protection from the environment is necessary, such as car parks, food processing factories and swimming pools. It is also ideal for saline atmospheres. It is available for flush or surface mounted devices with a variety of cable entry gaskets.

HOW IT WORKS

The Weather Stopper II consists of a clear polycarbonate cover, frame and gaskets that retrofit over the device to be protected. The gaskets seal the unit preventing dust, grime and water from getting to the device. In the event of an emergency, simply lift the cover to gain access to the protected device.

MODELS AVAILABLE

- STI 1250** Weather Stopper II flush mounted (includes weather gasket set)
- STI 3150** Weather Stopper II surface mounted (includes 50mm spacer & weather gasket set)

ACCESSORIES

- STI 3100** 50mm spacer (supplied with STI 3150)
- STI 1280** Backplate (for irregular surfaces)
- STI 3002** Weather gasket set (supplied with STI 1250 & STI 3150)

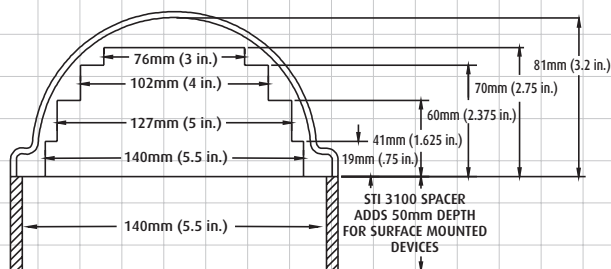
OPTIONS

COLOURS AVAILABLE For Green, Blue or Yellow add /G /B or /Y

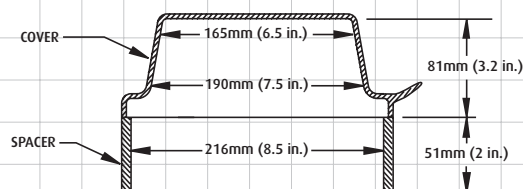
EXAMPLE STI 3150/G = Green Weather Stopper II surface mounted
STI 1250 = Red Weather Stopper II flush mounted

NB: The Weather Stopper II is supplied in red and with the operating instructions IN CASE OF FIRE – LIFT COVER BREAK GLASS Alternative and custom markings are available

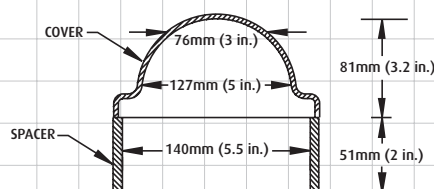
STI Product Catalogue – Weather Stopper II



DEPTH CHART FOR THE WEATHER STOPPER II



SIDE VIEW



END VIEW