



Emergency and Fire Shortform 2003



CONTENTS (EMERGENCY)

This shortform catalogue provides information on the most popular ranges of Menvier and JSB fire and emergency products in a concise and easy to use format.

Full details on the entire product range can be found at www.cooper-ls.com

Central Battery Systems ... 4

Emergency Luminaires

| | |
|---------------------|----|
| AG Bulkhead | 6 |
| Alfalux | 6 |
| Atlantic | 7 |
| Atlantic Plus | 7 |
| Britelite | 8 |
| Delta II | 9 |
| DRG | 9 |
| Ekolux | 10 |
| Eurolite | 10 |
| Fairlite RG | 11 |
| Fairlite SG | 12 |
| Halopack | 13 |
| Jubilee | 13 |
| Kwiklite | 14 |
| Milano | 15 |
| New Safe 8 | 15 |
| Roundlite | 16 |
| Sintralite | 16 |
| Slimlite | 17 |
| Stylite | 17 |
| Stral | 18 |
| Weatherlite | 19 |
| Zeta II | 19 |

Dedicated Exit Signs

| | |
|--------------------------|----|
| Britesign | 20 |
| Exit SE | 21 |
| Legendlite | 21 |
| Lucci | 22 |
| Manhattan | 22 |
| New Safe Ex | 23 |
| Recessed Safe Edge | 24 |
| Royalux | 25 |
| Safe Edge | 26 |
| Waylite 800 | 27 |
| ZED | 27 |

Tungsten Projectors

| | |
|---------------------|----|
| Beamlite | 28 |
| Gemini Junior | 28 |
| Metrolite | 29 |

Conversions

| | |
|--------------------|----|
| ACM1 | 30 |
| ADV | 30 |
| Convertalite | 31 |
| Convertapack | 31 |
| MPA | 32 |
| SMCB | 32 |

For **Fire** product range, see page 33



About Menvier and JSB



Introduction

Menvier was founded in 1975 and followed a path of consistent growth to become one of the UK's leading manufacturers of emergency lighting and fire detection systems, with market leading status in the UK and many other Countries Worldwide.

JSB was founded in 1962, as J.Smith (Brinksway) Ltd. In 1980, the company changed its name to JSB Electrical and it became a public limited company in 1986.

JSB has also become a major international supplier of emergency lighting and fire detection systems with products that are renowned for both style and value for money.

Crompton Lighting is one of the oldest lighting companies in the world, founded in 1878 by Col. Crompton, an entrepreneur with an interest in electricity.

Since that time, Crompton Lighting has grown considerably and is now one of the largest lighting manufacturers in the UK.

Products are manufactured in Doncaster from where they are then exported worldwide.

In 1997, Cooper Industries acquired Menvier Electronic Engineers, and in 1999, Cooper Industries also acquired the businesses of Crompton Lighting and JSB Electrical.

These 3 companies were combined to form Cooper Lighting and Security Limited, enabling the strengths of all 3 brands to be combined into a single customer focused business.

Sales and distribution

In addition to being the main UK manufacturing location, the Doncaster site also houses the UK and export sales offices. Backed up by a highly sophisticated IT system linked to all manufacturing sites, the sales office is able to give accurate availability information on both stock and made to order items.

A Nationwide team of experienced sales engineers are on hand who are able to advise on product application, assist with commercial enquiries and generate project quotations.

In depth product support is provided by the Doncaster based technical support department and a nationwide team of service engineers is available to provide commissioning, routine maintenance and repair services.

How to deal with Cooper Lighting and Security

Menvier and JSB products are available through a network of stockists.

- UK sales enquiries
Tel: 01302 303303
E-Mail: sales@cooper-ls.com
- Export sales enquiries
Tel: +44 1302 303250
E-Mail: export@cooper-ls.com
- Technical enquiries/support
Tel: 01302 303350
E-Mail: technical@cooper-ls.com
- Literature requests
Tel: 01302 303200
E-Mail: marketing@cooper-ls.com
- For comprehensive product, company and literature information please visit our website www.cooper-ls.com

CENTRAL BATTERY SYSTEMS

Central battery system based emergency lighting is ideal for larger projects. Central battery installations are generally much easier to maintain than self contained installations and will often be the most cost effective solution once long term maintenance costs have been taken into account.

Cooper Lighting and Security manufactures a wide range of emergency lighting systems. Standard products include AC/AC static inverter systems starting with a new compact low cost 500VA system and rising to 30KVA single phase systems as well as traditional AC/DC systems.

In addition to the standard range of products, bespoke systems are available which are designed and manufactured to suit the specifiers exact requirements.

To complement the range of Central systems, Cooper lighting and Security also offers a wide selection of slave luminaires and conversion modules which have been specifically designed to ensure compatibility with Cooper Lighting and Security central systems.

SELF TEST EMERGENCY LUMINAIRES

A number of self contained emergency luminaires are available with a self test facility. This means that the luminaire automatically carries out regular functional and discharge tests as well as continuously monitoring the status of the battery, the charger and the incoming mains supply.

In the event of a fault occurring, the luminaire provides both visual and audible indication designed to attract the attention of maintenance personnel.

Self test luminaires enable the building user avoid the cost and disruption of manual testing and to enhance the integrity of the emergency lighting system by providing continuous monitoring of key parameters such as mains supply and charger status.

Many self contained luminaires can be further enhanced by the addition of Infra Red communication between the luminaire and a hand held programmer.

The programmer is used to set up the fully programmable test schedule for each luminaire, download the status of each luminaire and instigate either a short functional or a full discharge manual test at any time if required.

For full details visit our web site at www.cooper-ls.com or request a copy of our self test brochure from our Marketing Services department.



CENTRAL TESTING SYSTEMS

Central Testing systems are ideal for larger projects.

The system carries out full automatic testing of the entire emergency lighting system including continuous monitoring of parameters such as incoming mains supply and battery charger status along with regular automatic functional and discharge testing of the luminaires.

Addressing of the luminaires is by means of a hand held programmer which is simply pressed against the data terminals of the luminaire to be programmed. The programmer incorporates an LCD display which provides visual confirmation that the interface has been programmed correctly. The programmer can also be used to read back the address of a programmed luminaire.

Two types of Easichack panel are available, one for self contained systems and one for slave luminaires, both types are suitable for use with either Menvier, JSB or Crompton luminaires and central battery systems.

Full system status is displayed at a central control panel by means of a two line LED display and the various system indicator LEDs. For larger projects, a number of panels can be networked together. Systems can also be enhanced by the addition of components such as network printers and computer monitoring software.

For maximum flexibility it is possible to connect slave and self contained panels on the same network.

For full details refer to the latest Menvier/JSB design handbook or contact you local sales engineer.





- Cast aluminium base
- IP65 rated
- Allen key fixings



- High output
- Cast aluminium base
- IP65 rated
- Allen key fixings
- Hinged geartray
- Plug in connections

AG BULKHEAD



High specification, low cost, vandal resistant, luminaire with a cast aluminium base and opal polycarbonate diffuser. Protected to IP65 and possessing a high level of resilience. Standard self contained versions are Kitemarked and ICEL approved.

Self test versions incorporate a module to automatically carry out regular testing of the complete luminaire. This saves time and cost by avoiding the need to carry out manual testing.

AG Bulkheads can be modified to operate with the Cooper Lighting and Security Easichck central testing system, please contact the technical sales department for further details.

| Cat. No. | Description |
|-------------|---|
| AG8/3/ICEL | 3 Hr Non-maintained AG Bulkhead |
| AG8/3M/ICEL | 3 Hr Maintained AG Bulkhead |
| AG8/3/IS | Self test 3 Hr Non-maintained AG Bulkhead |
| AG8/3M/IS | Self test 3 Hr Maintained AG Bulkhead |
| AG1111 | 11W PL mains only AG Bulkhead |
| AG8/110 | 110V AC DC Slave AG Bulkhead |
| AG8/24 | 24V AC DC Slave AG Bulkhead |
| AG8/50 | 50V AC DC Slave AG Bulkhead |
| AG8/230 | AG Bulkhead Static inverter Slave |

ALFALUX



Heavy duty, vandal resistant, a high output luminaire with a cast aluminium base and an opal Polycarbonate diffuser.

The luminaire is protected to IP65 and as an additional feature the fixing holes can be arranged to be outside the weatherproof section of the luminaire thus preventing water ingress via the fixing holes. Standard self contained versions are both Kitemarked and ICEL registered.

Alfalux luminaires can be modified to operate with the Cooper Lighting and Security Easichck central testing system, please contact the technical sales department for further details.

| Cat. No. | Description |
|-------------|-------------------------------|
| AF8/3/ICEL | 3 Hr Non-maintained Alfalux |
| AF8/3M/ICEL | 3 Hr Maintained Alfalux |
| AF28/3S | 3 Hr Sustained Alfalux |
| AF8/110 | Alfalux 110V AC DC Slave |
| AF8/24 | Alfalux 24V AC DC Slave |
| AF8/50 | Alfalux 50V AC DC Slave |
| AF8/230 | Alfalux Static inverter Slave |
| AF8/FM | Alfalux Semi recess bezel |

ATLANTIC



Atlantic is a highly versatile internal or external bulkhead with a number of innovative features. It is IP65 rated and vandal resistant, the diffuser can only be removed by use of a tool. Careful optical design also provides excellent photometric performance, installation time is minimised by use of a plug in geartray and self locking clip on diffuser.

2 versions of the self contained product are available, Atlantic and Atlantic plus which is a high performance version utilising an additional cell to significantly increase the emergency light output

Standard self contained versions are both Kitemarked and ICEL registered.

Self test versions incorporate a module to automatically carry out regular testing of the complete fitting. This saves effort and cost by avoiding the need to manually carry out the mandatory testing of emergency luminaires.

Atlantic luminaires can be modified to operate with the Cooper Lighting and Security Easichck advanced central testing system, please contact the technical sales department for further details.

| Cat. No. | Description |
|-----------|---|
| ATN | 3 Hr Non-maintained Atlantic |
| ATPN | 3 Hr Non-maintained Atlantic Plus |
| ATM | 3 Hr Maintained Atlantic |
| ATPM | 3 Hr Maintained Atlantic Plus |
| ATN/IS | Self Test 3 Hr Non-maintained Atlantic |
| ATPN/IS | Self Test 3 Hr Non-maintained Atlantic Plus |
| ATPN/IR | Self Test 3 Hr NM Atlantic Plus with IR communication |
| ATM/IS | Self Test 3 Hr Maintained Atlantic |
| ATPM/IS | Self Test 3 Hr Maintained Atlantic Plus |
| ATPM/IR | Self Test 3 Hr M Atlantic Plus with IR communication |
| AT110 | Atlantic 110V AC DC Slave |
| AT24 | Atlantic 24V AC DC Slave |
| AT50 | Atlantic 50V AC DC Slave |
| AT230CG | Atlantic Ceaguard Slave |
| ATS/8/230 | Atlantic Static Inverter Slave |
| LEXSABL | Self adhesive legend kit |



- IP65 rated
- Snap on self locking diffuser
- Requires tool to remove diffuser
- Vandal resistant
- Excellent optical design



- **Superb performance reduces number of fittings required**
- **Plug in body - no disassembly required**
- **Heavy duty connector**

BRITELITE



Britelite is an extremely high performance 8W emergency luminaire. It has been carefully designed to make best possible use of all the light emitted from the lamp thus achieving excellent spacing performance and thereby minimising the amount of luminaires required.

Installation time is kept to a minimum by means of the heavy duty connectors and plug in body.

Self test versions incorporate a module to automatically carry out regular testing of the complete fitting. This saves effort and cost by avoiding the need to manually carry out the mandatory testing of emergency luminaires.

Britelite can be modified to operate with the Cooper Lighting and Security Easichack advanced central testing system, please contact the technical sales department for further details.

Standard self contained versions are both Kitemarked and ICEL registered.

| Cat. No. | Description |
|----------|---|
| BLN | 3 Hr Non-maintained Britelite |
| BLN/IR | Self test 3 Hr NM Britelite with IR communication |
| BLN/IS | Self test 3 Hr Non-maintained Britelite |
| BLM | 3 Hr Maintained Britelite |
| BLM/IR | Self test 3 Hr M Britelite with IR communication |
| BLM/IS | Self test 3 Hr Maintained Britelite |
| LEXSABL | Self adhesive legend kit |

DELTA II



Delta II is a stylish high performance but cost effective luminaire designed to achieve maximum spacing performance thereby reducing the number of fittings required. To further enhance the appearance of this product, decorative skirts are available in a choice of white, brass, silver or black finish. Standard self contained versions are Kitemarked and ICEL registered.

Delta fittings can be modified to operate with the Cooper Lighting and Security Easichack central testing system, please contact the technical sales department for further details.

| Cat. No. | Description |
|---------------|---------------------------------|
| DE8/3/ICEL | 3 Hr Non-maintained Delta II |
| DE8/3M/ICEL | 3 Hr Maintained Delta II |
| DE8/110 | Delta II 110V AC DC Slave |
| DE8/24 | Delta II 24V AC DC Slave |
| DE8/50 | Delta II 50V AC DC Slave |
| DE8/230 | Delta II Static Inverter Slave |
| DE8/SK/BLACK | Delta decorative skirt (black) |
| DE8/SK/BRASS | Delta decorative skirt (brass) |
| DE8/SK/SILVER | Delta decorative skirt (silver) |
| DE8/SK/WHITE | Delta decorative skirt (white) |

DRG

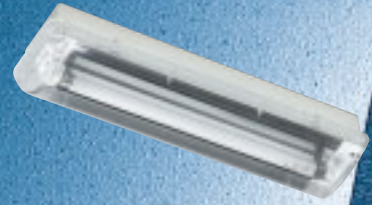


DRG is a compact heavy duty, vandal resistant 28W 2D, weatherproof luminaire with a cast aluminium base and an opal polycarbonate diffuser. DRG is very robust and utilises allen key fixings to secure the diffuser to the body. Standard self contained versions are Kitemarked.

Self test versions are available, alternatively DRG luminaires can be modified to operate with the Cooper Lighting and Security Easichack central testing system, please contact the technical sales department for further details.

For applications requiring extreme resilience, or to enhance the styling of the product, a pattress and grille kit is available.

| Cat. No. | Description |
|------------------|---|
| DRG28/3/230-240 | 3 Hr Non-maintained DRG |
| DRG28/3M/230-240 | 3 Hr Maintained DRG |
| DRG1281/240/HPF | Mains only DRG (non emergency) |
| DRG28/3/IS | Self test 3 Hr Non-maintained DRG |
| DRG28/3M/IS | Self test 3 Hr Maintained DRG |
| DRG110 | DRG 110V AC DC Slave |
| DRG/28/230 | DRG static inverter Slave |
| DRG/ACC/KIT | Accessory pattress and grille for DRG fitting |



- Superb optical design
- Compact dimensions
- Optional skirt



- Robust design
- Allen key fixings
- IP65 rated



- **Accepts surface or rear entry cables**
- **Robust metal base**
- **Optional semi recess bezel**



- **Flush fitting**
- **Easy to install**
- **Suitable for solid or false ceilings**

EKOLUX



Surface interior bulkhead with metal body able to accept rear entry or surface side entry cables, it can either be surface mounted or an optional semi recess bezel can be utilised to enhance the decorative appearance of the product. The diffuser is secured with allen key screws.

Standard self contained versions are Kitemarked and ICEL registered.

Ekolux can be modified to operate with the Cooper Lighting and Security Easichack central testing system, please contact the technical sales department for further details.

| Cat. No. | Description |
|-------------|------------------------------|
| EK8/3/ICEL | 3 Hr Non-maintained Ekolux |
| EK8/3M/ICEL | 3 Hr Maintained Ekolux |
| EK8/110 | Ekolux 110V AC DC Slave |
| EK8/24 | Ekolux 24V AC DC Slave |
| EK8/50 | Ekolux 50V AC DC Slave |
| EK8/230 | Ekolux Static inverter Slave |
| EK8/FM | Semi recess bezel |

EUROLITE



Recessed 8W emergency luminaire. The luminaire is designed for ease of installation and features a first fix trim plate into which the body of the luminaire is then clicked during installation. Only front access is required for installation so fitting is simple even into solid ceilings.

Self test versions incorporate a module to automatically carry out regular testing of the complete fitting. This saves effort and cost by avoiding the need to manually carry out the mandatory testing of emergency luminaires.

Eurolite can be modified to operate with the Cooper Lighting and Security Easichack advanced central testing system, please contact the technical sales department for further details.

Standard self contained versions are both Kitemarked and ICEL registered.

| Cat. No. | Description |
|---------------|--|
| EURON | 3 Hr Non-maintained Eurolite |
| EUROM | 3 Hr Maintained Eurolite |
| EURON/IS | Self test 3 Hr Non-maintained Eurolite |
| EUROM/IS | Self test 3 Hr Maintained Eurolite |
| NEURO110 | Eurolite 110V AC DC Slave |
| NEURO24 | Eurolite 24V AC DC Slave |
| NEURO50 | Eurolite 50V AC DC Slave |
| NEURO230CG | Eurolite Ceaguard Slave |
| NEURO/S/8/230 | Eurolite Static Inverter Slave |

FAIRLITE RG



Fairlite RG is a Compact decorative round 2D luminaire available in 16W or 28W versions. It is supplied as standard with a grey base but can also be supplied with either a brass or chrome finish base. It is available in mains only, non maintained emergency or maintained emergency versions.

Self test versions incorporate a module to automatically carry out regular testing of the complete luminaire.

Fairlite can be modified to operate with the Cooper Lighting and Security Easichck central testing system, please contact the technical sales department for further details.

| Cat. No. | Description |
|--------------|--|
| RG28/3 | 3 Hr Non-maintained Fairlite |
| RG28/3/CH | 3 Hr Non-maintained Fairlite (Chrome finish) |
| RG28/3/BR | 3 Hr Non-maintained Fairlite (Brass finish) |
| RG28/3/IS | Self test 3 Hr Non-maintained Fairlite |
| RG16/3 | 3 Hr Non-maintained Fairlite |
| RG16/3/CH | 3 Hr Non-maintained Fairlite (Chrome finish) |
| RG16/3/BR | 3 Hr Non-maintained Fairlite (Brass finish) |
| RG28/3M | 3 Hr Maintained Fairlite |
| RG28/3M/CH | 3 Hr Maintained Fairlite (Chrome finish) |
| RG28/3M/BR | 3 Hr Maintained Fairlite (Brass finish) |
| RG28/3M/IS | Self test 3 Hr Maintained Fairlite |
| RG16/3M | 3 Hr Maintained Fairlite |
| RG16/3M/CH | 3 Hr Maintained Fairlite (Chrome finish) |
| RG16/3M/BR | 3 Hr Maintained Fairlite (Brass finish) |
| RG110 | 28W Fairlite 110V AC DC Slave |
| RG110/CH | 28W Fairlite 110V AC DC Slave (Chrome finish) |
| RG110/BR | 28W Fairlite 110V AC DC Slave (Brass finish) |
| RG50 | 28W Fairlite Round 50V AC DC Slave |
| RG50/CH | 28W Fairlite Round 50V AC DC Slave (Chrome) |
| RG50/BR | 28W Fairlite Round 50V AC DC Slave (Brass) |
| RG/28/230 | Fairlite Static inverter Slave |
| RG/16/230 | Fairlite Static inverter Slave |
| RG/28/230/CH | Fairlite Static inverter Slave (Chrome finish) |
| RG/16/230/CH | Fairlite Static inverter Slave (Chrome finish) |
| RG/28/230/BR | Fairlite Static inverter Slave (Brass finish) |
| RG/28/230/BR | Fairlite Static inverter Slave (Brass finish) |



- Low profile
- Quick fit design
- Mains and matching integral emergency versions



- **Low profile**
- **Quick fit design**
- **Mains and matching integral emergency versions**

FAIRLITE SG



Fairlite SG is a Compact decorative square 2D luminaire available in 16W or 28W versions. It is supplied as standard with a grey base but can also be supplied with either a brass or chrome finish base. It is available in mains only, non maintained emergency or maintained emergency versions.

Self test versions incorporate a module to automatically carry out regular testing of the complete luminaire.

Fairlite can be modified to operate with the Cooper Lighting and Security Easichек central testing system, please contact the technical sales department for further details.

| Cat. No. | Description |
|--------------|--|
| SG28/3 | 3 Hr Non-maintained Fairlite |
| SG28/3/CH | 3 Hr Non-maintained Fairlite (Chrome finish) |
| SG28/3/BR | 3 Hr Non-maintained Fairlite (Brass finish) |
| SG28/3/IS | Self test 3 Hr Non-maintained Fairlite |
| SG16/3 | 3 Hr Non-maintained Fairlite |
| SG16/3/CH | 3 Hr Non-maintained Fairlite (Chrome finish) |
| SG16/3/BR | 3 Hr Non-maintained Fairlite (Brass finish) |
| SG28/3M | 3 Hr Maintained Fairlite |
| SG28/3M/CH | 3 Hr Maintained Fairlite (Chrome finish) |
| SG28/3M/BR | 3 Hr Maintained Fairlite (Brass finish) |
| SG28/3M/IS | Self test 3 Hr Maintained Fairlite |
| SG16/3M | 3 Hr Maintained Fairlite |
| SG16/3M/CH | 3 Hr Maintained Fairlite (Chrome finish) |
| SG16/3M/BR | 3 Hr Maintained Fairlite (Brass finish) |
| SG110 | 28W Fairlite 110V AC DC Slave |
| SG110/CH | 28W Fairlite 110V AC DC Slave (Chrome finish) |
| SG110/BR | 28W Fairlite 110V AC DC Slave (Brass finish) |
| SG50 | 28W Fairlite Square 50V AC DC Slave |
| SG50/CH | 28W Fairlite Square 50V AC DC Slave (Chrome) |
| SG50/BR | 28W Fairlite Square 50V AC DC Slave (Brass) |
| SG/28/230 | Fairlite Static inverter Slave |
| SG/16/230 | Fairlite Static inverter Slave |
| SG/28/230/CH | Fairlite Static inverter Slave (Chrome finish) |
| SG/16/230/CH | Fairlite Static inverter Slave (Chrome finish) |
| SG/28/230/BR | Fairlite Static inverter Slave (Brass finish) |
| SG/28/230/BR | Fairlite Static inverter Slave (Brass finish) |

HALOPACK



Halopack is a compact discreet tungsten downlighter unit designed for use with suspended ceilings. The lamp assembly has a diameter of only 11CM and its ultra low profile makes it ideal for use in design sensitive areas.

The lightweight lamp assembly is simply held in place by spring clips, the battery and charger are housed in a separate remote enclosure.

Halopack can be modified to operate with the Cooper Lighting and Security Easichack advanced central testing system, please contact the technical sales department for further details.

| Cat. No. | Description |
|----------|-------------------------------|
| HP10 | 3 Hr Non-maintained Halopack |
| ZHP/R | Additional reflector assembly |



- Discreet styling
- High performance



JUBILEE



Jubilee is a stylish interior bulkhead designed to blend with a wide range of interior designs, particularly those of a traditional nature.

Jubilee has been carefully designed such that the styling of the product does not interfere with ease of installation or performance.

Self test versions incorporate a module to automatically carry out regular testing of the complete luminaire.

Jubilee can also be modified to operate with the Cooper Lighting and Security Easichack central testing system, please contact the technical sales department for further details.

| Cat. No. | Description |
|-----------|---------------------------------------|
| JB8/3 | 3 Hr Non-maintained Jubilee |
| JB8/3M | 3 Hr Maintained Jubilee |
| JB8/3/IS | Self test 3 Hr Non-maintained Jubilee |
| JB8/3M/IS | Self test 3 Hr Maintained Jubilee |
| JB8/110 | 110V AC DC Slave Jubilee |
| JB8/24 | 24V AC DC Slave Jubilee |
| JB8/50 | 50V AC DC Slave Jubilee |
| JB8/230 | Static inverter Slave Jubilee |



- Traditional styling
- Choice of cable entries

KWIKLITE



Kwiklite is an extremely well proven luminaire designed for ease of installation. Electrical connections and luminaire fixings are by means of a detachable base plate, to which the entire luminaire body is then clipped without the need for any disassembly of the luminaire.

Double sided diffusers (both standard and low profile versions) as available as separate accessories to enable the fitting to be converted to a ceiling mounted double sided exit sign.

Kwiklite is both Kitemarked and ICEL registered.

- **Fast fit design**
- **No body disassembly required**

| Cat. No. | Description |
|----------|--|
| K8N | 3 Hr Non-maintained Kwiklite |
| K8M | 3 Hr Maintained Kwiklite |
| KDS | Double sided diffuser for Kwiklite |
| KLPDS | Low profile double sided diffuser for Kwiklite |



MILANO



Milano offers elegant classic design with smooth opal glass diffuser and polished brass finish bezel.

It has a quality feel and is ideal for use in traditional prestigious styled locations.

Milano can be modified to operate with the Cooper Lighting and Security Easichack central testing system, please contact the technical sales department for further details.

| Cat. No. | Description |
|---------------|------------------------------------|
| ML28/3/BRASS | 3 Hr Non-maintained Milano |
| ML28/3M/BRASS | 3 Hr Maintained Milano |
| ML230/BRASS | Static inverter Slave Milano |
| ML1281/BRASS | 28W 2D matching mains only version |

NEW SAFE 8



Low cost 8 Watt IP65 rated bulkhead luminaire.

A semi recessing bezel is available if required as an optional extra.

Self test versions incorporate a module to automatically carry out regular testing of the complete fitting. This saves effort and cost by avoiding the need to manually carry out the mandatory testing of emergency luminaires.

New Safe 8 can be modified to operate with the Cooper Lighting and Security Easichack central testing system, please contact the technical sales department for further details.

| Cat. No. | Description |
|------------|--|
| NS8 | 3 Hr Non-maintained New Safe 8 |
| NS8M | 3 Hr Maintained New Safe 8 |
| NS8/IS | Self test 3 Hr Non-maintained New Safe 8 |
| NS8M/IS | Self test 3 Hr Maintained New Safe 8 |
| NS8110 | New Safe 8 110V AC DC Slave |
| NS824 | New Safe 8 24V AC DC Slave |
| NS850 | New Safe 8 50V AC DC Slave |
| NS8230CG | New Safe 8 Ceaguard Slave |
| NS8S/8/230 | New Safe 8 Static Inverter Slave |
| NSR | Semi recess bezel kit |
| LEXSAS | Self adhesive legend kit |



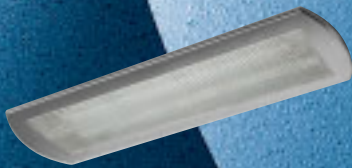
- Glass diffuser
- Elegant design



- Low cost
- Easy to install
- Weatherproof



- Specially designed to sit flush over surface conduit
- Weatherproof



- Choice of colour finish
- Quick fit design
- Unobtrusive styling

ROUNDLITE



Roundlite is a robust IP65 rated 28W 2D circular bulkhead designed for either internal or external use. The diffuser is secured by Allen key screws. Conduit and BESA entries are moulded into the base enabling a snug fit against the fixing surface even on surface wiring installations thus providing an enhanced level of resilience and appearance.

Self contained versions are Kitemarked.

| Cat. No. | Description |
|----------|---|
| RLPM28 | 3 Hr Maintained Prismatic Roundlite |
| RLP28 | Matching mains only Prismatic Roundlite |
| RLOM28 | 3 Hr Maintained Opal Roundlite |
| RLO28 | Matching mains only opal Roundlite |

SINTRALITE



Sinralite is a flush mounted 8 watt luminaire available in a choice of white, brass and chrome finishes. The fitting incorporates a spring clip mounting system and clip together assembly to provide a quick and simple installation.

| Cat. No. | Description |
|--------------|--|
| SN8/3/NMM | 3 Hr Maintained Sinralite |
| SN8/3/NMM/CH | 3 Hr Maintained Sinralite (Chrome finish) |
| SN8/3/NMM/BR | 3 Hr Maintained Sinralite (Brass finish) |
| SN110 | Sinralite 110V AC DC Slave |
| SN110/BR | Sinralite 110V AC DC Slave with Brass finish |
| SN110/CH | Sinralite 110V AC DC Slave with Chrome finish |
| SN24 | Sinralite 24V AC DC Slave |
| SN24/BR | Sinralite 24V AC DC Slave with Brass finish |
| SN24/CH | Sinralite 24V AC DC Slave with Chrome finish |
| SN50 | Sinralite 50V AC DC Slave |
| SN50/BR | Sinralite 50V AC DC Slave with Brass finish |
| SN50/CH | Sinralite 50V AC DC Slave with Chrome finish |
| SN230 | Sinralite Static Inverter Slave |
| SN230/BR | Sinralite Static Inverter Slave with Brass finish |
| SN230/CH | Sinralite Static Inverter Slave with Chrome finish |

SLIMLITE



Traditional styled low profile interior surface luminaire. Its large dimensions enable it to accept a large legend kit (ordered separately) and are also ideal for covering decoration damage from the removal of a previous luminaire.

Standard self contained versions are both Kitemarked and ICEL registered.

| Cat. No. | Description |
|----------|------------------------------|
| SLON | 3 Hr Non-maintained Slimlite |
| SLOM | 3 Hr Maintained Slimlite |



- Large surface area
- Low profile
- Accepts large legend kit

STYLITE



Stylite is a flush mounted, compact, easy to install Non maintained emergency luminaire supplied with 3 different colour bezels (white, brass and chrome).

The fitting incorporates a spring clip mounting system and clip together assembly to provide a quick and simple installation.

| Cat. No. | Description |
|---------------|-----------------------------|
| SY3/3/230-240 | 3 Hr Non-maintained Stylite |



- Supplied with 3 different colour bezels
- Discreet modern styling

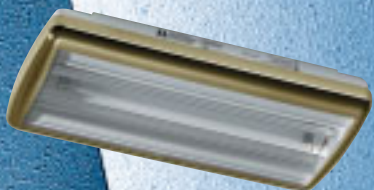
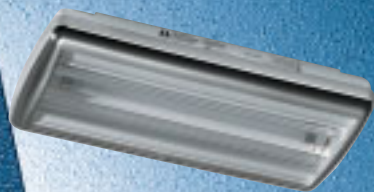
VISTRAL



Modern styled low profile interior surface luminaire with a maximum depth of only 50mm. Ideal for use as a decorative luminaire or as an exit sign by the addition of a self adhesive legend kit (ordered separately).

Standard self contained versions are Kitemarked and ICEL registered. Self test versions are available as are versions to operate with the Easichack central testing system.

- **Stylish but unobtrusive design**
- **Low profile**
- **Choice of colour finishes**



| Cat. No. | Description |
|--------------|---|
| VSN | 3 Hr Non Maintained Vistral |
| VSN/CH | 3 Hr Non Maintained Vistral (Chrome finish) |
| VSN/GD | 3 Hr Non Maintained Vistral (Gold finish) |
| VSN/IS | Self test 3 Hr Non Maintained Vistral |
| VSN/IR | Self test 3 Hr NM Vistral with IR communication |
| VSN/GD/IS | Self test 3 Hr Non Maintained Vistral (Gold) |
| VSN/GD/IR | Self test 3 Hr NM Vistral (Gold) with IR comms |
| VSN/CH/IS | Self test 3 Hr Non Maintained Vistral (Chrome) |
| VSN/CH/IR | Self test 3 Hr NM Vistral (Chrome) with IR comms |
| VSM | 3 Hr Maintained Vistral |
| VSM/CH | 3 Hr Maintained Vistral (Chrome finish) |
| VSM/GD | 3 Hr Maintained Vistral (Gold finish) |
| VSM/IS | Self test 3 Hr Maintained Vistral |
| VSM/IR | Self test 3 Hr Maintained Vistral with IR comms |
| VSM/GD/IS | Self test 3 Hr Maintained Vistral (Gold) |
| VSM/GD/IR | Self test 3 Hr Mtd Vistral (Gold) with IR comms |
| VSM/CH/IS | Self test 3 Hr Maintained Vistral (Chrome) |
| VSM/CH/IR | Self test 3 Hr Mtd Vistral (Chrome) with IR comms |
| VS8/S/230 | Vistral Static inverter Slave |
| VS8/S/230/CH | Vistral Static inverter Slave with Chrome finish |
| VS8/S/230/GD | Vistral Static inverter Slave with Gold finish |
| VS110 | Vistral 110V AC DC Slave |
| VS110/CH | Vistral 110V AC DC Slave with Chrome finish |
| VS110/GD | Vistral 110V AC DC Slave with Gold finish |
| VS50 | Vistral 50V AC DC Slave |
| VS50/CH | Vistral 50V AC DC Slave with Chrome finish |
| VS50/GD | Vistral 50V AC DC Slave with Gold finish |
| VS24 | Vistral 24V AC DC Slave |
| VS24/CH | Vistral 24V AC DC Slave with Chrome finish |
| VS24/GD | Vistral 24V AC DC Slave with Gold finish |
| VS230CG | Vistral Ceeguard Slave |
| VS230CG/CH | Vistral Ceeguard Slave with Chrome finish |
| VS230CG/GD | Vistral Ceeguard Slave with Gold finish |
| LEXSAVS | Legend kit to suit Vistral luminaire |

WEATHERLITE



Robust vandal resistant 8W bulkhead, designed for internal or external use, in applications that require a high degree of ingress protection or resilience.

The diffuser is secured with Allen key fixings.

Weatherlite has a plug in geartray for ease of installation, a semi recess bezel is available if required as an accessory.

Weatherlite products can be modified to operate with the Cooper Lighting and Security Easichack central testing system, please contact the technical sales department for further details.

Standard self contained versions are both Kitemarked and ICEL registered.

| Cat. No. | Description |
|-----------|-----------------------------------|
| WLN | 3 Hr Non Maintained Weatherlite |
| WLM | 3 Hr Maintained Weatherlite |
| WLS | 3 Hr Sustained Weatherlite |
| WL24 | Weatherlite 24V AC DC Slave |
| WL50 | Weatherlite 50V AC DC Slave |
| WL110 | Weatherlite 110V AC DC Slave |
| WLS/8/230 | Weatherlite Static Inverter Slave |
| WL230CG | Weatherlite Ceaguard Slave |
| WLBEZ | Weatherlite Semi Recess Bezel |



- Robust
- IP65 rated
- Allen key fixings

ZETA

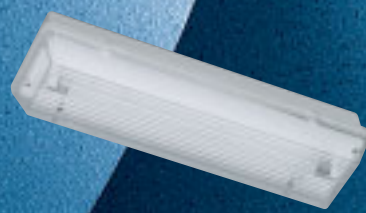


Zeta II is a low cost, IP65 8 Watt bulkhead luminaire.

It can be semi-recessed by means of a purpose designed semi recess bezel (sold separately).

Zetalites can be modified to operate with the Cooper Lighting and Security Easichack central testing system, please contact the technical sales department for further details.

| Cat. No. | Description |
|-------------|-------------------------------|
| ZE8/3/ICEL | 3 Hr Non-maintained Zeta II |
| ZE8/3M/ICEL | 3 Hr Maintained Zeta II |
| ZE8/110 | Zeta II 110V AC DC Slave |
| ZE8/24 | Zeta II 24V AC DC Slave |
| ZE8/50 | Zeta II 50V AC DC Slave |
| ZE8/230 | Zeta II Static Inverter Slave |
| ZE8/FM | Zeta II Semi recess bezel |



- Low cost
- IP65 rated



- **New LED technology**
- **Fully meets EN1838**
- **Stylish but robust construction**
- **Choice of colour finishes available**

Britesign is a high quality long life LED exit sign from Menvier. Unlike fluorescent lamps, which require regular replacement when used in the maintained mode, Britesign uses high power LED's to achieve full compliance with EN1838 and a 40,000 hour design life light source. The stylish luminaire has a robust all metal body and is available with a choice of different front trim finishes making it suitable for use in a wide range of applications.

Standard self contained luminaires can be set to operate in maintained or non-maintained mode, control of maintained operation is by means of an external switched live supply.

For ease of ordering, the main body and legend panel assembly (which incorporates the front trim) are ordered and supplied as two separate parts.

| Cat. No. | Description |
|----------|---|
| BSM | Luminaire body (maintained self contained) |
| BSS230 | Luminaire body (static inverter slave) |
| BS/G/AD | Legend assembly (dark grey painted finish) c/w Arrow down legend |
| BS/G/AL | Legend assembly (dark grey painted finish) c/w Arrow left legend |
| BS/G/AR | Legend assembly (dark grey painted finish) c/w Arrow right legend |
| BS/W/AD | Legend assembly (white painted finish) c/w Arrow down legend |
| BS/W/AL | Legend assembly (white painted finish) c/w Arrow left legend |
| BS/W/AR | Legend assembly (white painted finish) c/w Arrow right legend |
| BS/C/AD | Legend assembly (plated chrome finish) c/w Arrow down legend |
| BS/C/AL | Legend assembly (plated chrome finish) c/w Arrow left legend |
| BS/C/AR | Legend assembly (plated chrome finish) c/w Arrow right legend |

EXIT SE



Exit SE is a substantial Exit sign with large downlighter panel and excellent viewing distance. The legend (ordered separately) is screen printed on the inside of the panel to prevent abrasion damage during cleaning etc.

Standard self contained versions are Kitemarked.

Exit SE products can be modified to operate with the Cooper Lighting and Security Easichck central testing system, please contact the technical sales department for further details.

| Cat. No. | Description |
|-------------|--|
| SE8/3/ICEL | 3 Hr Non-maintained Exit SE |
| SE8/3M/ICEL | 3 Hr Maintained Exit SE |
| SE8/110 | Exit SE 110V AC DC Slave |
| SE8/50 | Exit SE 50V AC DC Slave |
| SE8/230 | Exit SE Static inverter Slave |
| SEAD | Legend panel for Exit SE (Arrow down) |
| SEAL | Legend panel for Exit SE (Arrow left) |
| SEAR | Legend panel for Exit SE (Arrow right) |

LEGENDLITE



Economy, metal box type exit luminaire with screen printed legend (Ordered separately).

| Cat. No. | Description |
|----------------|--|
| LE8/3/230-240 | 3 Hr Non-maintained Legendlite |
| LE8/3M/230-240 | 3 Hr Maintained Legendlite |
| LEAL/R | Legend panel for Legendlite (arrow left/right) |
| LEAD | Legend panel to suit Legendlite (arrow down) |



- Large viewing distance (39 Mtrs)
- Robust construction
- Internally screen printed legend



- Low cost
- All metal body



- Long life LED light source
- Meets EN1838 requirements



- Stylish design
- Ceiling or wall mounting

LUCCI



Lucci is a stylish Edgelit exit sign using LED technology to ensure a long life. The luminaire comprises a first fix ceiling plate with plug and socket wiring connections into which the entire luminaire body is later plugged without the need for disassembly.

Once pushed into place, locking tabs on the side of the body activate providing a secure fixing without the need for screws.

A semi recess bezel with integral luminaire fixings is available if required.

| Cat. No. | Description |
|----------|---|
| LUCM | 3 Hr Maintained Lucci luminaire |
| LUCADS | Single sided pictogram - Arrow Down |
| LUCALR | Double sided pictogram - Arrow Left/Right |
| LUCAD | Double sided pictogram - Arrow Down |
| LUCBEZ | Lucci semi recess bezel |

MANHATTAN



Stylish edge lit suspended exit sign for prestigious locations, suitable for wall or ceiling mounting. A first fix mounting plate is incorporated for ease of installation.

Legend panels for Manhattan fittings are ordered separately.

Manhattan luminaires can be modified to operate with the Cooper Lighting and Security Easichack central testing system, please contact the technical sales department for further details.

| Cat. No. | Description |
|----------------|--|
| MA8/3M/230-240 | 3 Hr Maintained Manhattan |
| MA8/3/230-240 | 3 Hr Non-maintained Manhattan |
| MA8/110 | 110V AC DC Slave Manhattan |
| MA8/50 | 50V AC DC Slave Manhattan |
| MA8/24 | 24V AC DC Slave Manhattan |
| MA8/230 | Static inverter Slave Manhattan |
| MAAD | Legend panel to suit Manhattan (arrow down) |
| MAAL | Legend panel to suit Manhattan (arrow left) |
| MAAR | Legend panel to suit Manhattan (arrow right) |

NEW SAFE EX



Low cost attractive exit sign suitable for wall mounting, designed to be easily and quickly installed and incorporating substantial downlighter panel with fresnel lens.

Standard self contained versions are Kitemarked.

Self test versions incorporate a module to automatically carry out regular testing of the complete fitting. This saves effort and cost by avoiding the need to manually carry out the mandatory testing of emergency luminaires.

New Safe Ex luminaires can be modified to operate with the Easichck central testing system, please contact the technical sales department for further details.

Legend panels are ordered separately.

| Cat. No. | Description |
|-----------|--|
| SXN | 3 Hr Non-maintained New Safe Ex |
| SXM | 3 Hr Maintained New Safe Ex |
| SXN/IS | Self test 3 Hr Non-maintained New Safe Ex |
| SXN/IR | Self test 3 Hr NM New Safe Ex with IR comms |
| SXM/IS | Self test 3 Hr Maintained New Safe Ex |
| SXM/IR | Self test 3 Hr Mtd New Safe Ex with IR comms |
| SX110 | New Safe Ex 110V AC DC Slave |
| SX24 | New Safe Ex 24V AC DC Slave |
| SX50 | New Safe Ex 50V AC DC Slave |
| SX230CG | New Safe Ex Ceaguard Slave |
| SXS/8/230 | New Safe Ex Static Inverter Slave |
| PEXD | Legend panel for New Safe Ex (Arrow down) |
| PEXL | Legend panel for New Safe Ex (Arrow left) |
| PEXR | Legend panel for New Safe Ex (Arrow right) |



- Meets EN1838
- Modern design
- Hinged removable geartray
- Top or rear entry
- 30 Metre viewing distance

RECESSED SAFE EDGE



Decorative 8W flush mounted exit sign available in either white, brass or chrome finish. Left/right legend is double sided as standard, suitable for single or double sided use.

Self test versions incorporate a module to automatically carry out regular testing of the complete fitting. This saves effort and cost by avoiding the need to manually carry out the mandatory testing of emergency luminaires.

Standard self contained versions are Kitemarked.

Recessed Safe Edge can be modified to operate with the Cooper Lighting and Security Easichack central testing system, please contact the technical sales department for further details.

- Choice of colour finish
- Flush fitting
- Easy to install
- Suitable for solid or false ceilings

| Cat. No. | Description |
|--------------|---|
| RSEM | 3 Hr Maintained Recessed Safe Edge (white) |
| RSEM/CH | 3 Hr Maintained Recessed Safe Edge (chrome) |
| RSEM/GD | 3 Hr Maintained Recessed Safe Edge (gold) |
| RSEM/IS | Self test Maintained Recessed Safe Edge (white) |
| RSEM/CH/IS | Self test Maintained Recessed Safe Edge (chrome) |
| RSEM/GD/IS | Self test Maintained Recessed Safe Edge (gold) |
| RSE110 | Recessed Safe Edge 110V AC DC Slave (white) |
| RSE110/CH | Recessed Safe Edge 110V AC DC Slave (chrome) |
| RSE110/GD | Recessed Safe Edge 110V AC DC Slave (gold) |
| RSE24 | Recessed Safe Edge 24V AC DC Slave (white) |
| RSE24/CH | Recessed Safe Edge 24V AC DC Slave (chrome) |
| RSE24/GD | Recessed Safe Edge 24V AC DC Slave (gold) |
| RSE50 | Recessed Safe Edge 50V AC DC Slave (white) |
| RSE50/CH | Recessed Safe Edge 50V AC DC Slave (chrome) |
| RSE50/GD | Recessed Safe Edge 50V AC DC Slave (gold) |
| RSE230CG | Recessed Safe Edge Ceaguard Slave (white) |
| RSE230CG/CH | Recessed Safe Edge Ceaguard Slave (chrome) |
| RSE230CG/GD | Recessed Safe Edge Ceaguard Slave (gold) |
| RSE/S/230 | Recessed Safe Edge Static Inverter Slave (white) |
| RSE/S/230/CH | Recessed Safe Edge Static Inverter Slave (chrome) |
| RSE/S/230/GD | Recessed Safe Edge Static Inverter Slave (gold) |
| SEDLR | D/S legend (arrow left/right) |
| SEDS | Legend (single sided arrow down) |
| SEDDSS | Legend (double sided arrow down) |

ROYALUX



Royalux is an edge lit suspended exit sign for prestigious locations, available in either brass or chrome finish.

A first fix ceiling plate is incorporated for ease of installation, which can be either ceiling or wall mounted. Legends are ordered separately.

Self test versions incorporate a module to automatically carry out regular testing of the complete fitting. This saves effort and cost by avoiding the need to manually carry out the mandatory testing of emergency luminaires.

Royalux can be modified to operate with the Cooper Lighting and Security Easichk advanced central testing system, please contact the technical sales department for further details.

| Cat. No. | Description |
|-------------------|---|
| RX8/3M/230-240 | 3 Hr Maintained Royalux |
| RX8/3M/230-240/CH | 3 Hr Maintained Royalux (Chrome finish) |
| RX8/3/230-240 | 3 Hr Non-maintained Royalux |
| RX8/3/230-240/CH | 3 Hr Non-maintained Royalux (Chrome finish) |
| RX8/3M/IS | Self test 3 Hr Maintained Royalux |
| RX8/3M/CH/IS | Self test 3 Hr Maintained Royalux (Chrome) |
| RX8/110 | Royalux 110V AC DC Slave |
| RX8/110/CH | Royalux 110V AC DC Slave (Chrome finish) |
| RX8/24 | Royalux 24V AC DC Slave |
| RX8/24/CH | Royalux 24V AC DC Slave (Chrome finish) |
| RX8/50 | Royalux 50V AC DC Slave |
| RX8/50/CH | Royalux 50V AC DC Slave (Chrome finish) |
| RX8/230 | Royalux Static Inverter Slave |
| RX8/230/CH | Royalux Static Inverter Slave (Chrome finish) |
| RXAL | Brass legend panel to suit Royalux (arrow left) |
| RXAR | Brass legend panel to suit Royalux (arrow right) |
| RXAD | Brass legend panel to suit Royalux (arrow down) |
| RXDS | Double sided brass Royalux legend |
| RXAL/CH | Chrome legend panel to suit Royalux (arrow left) |
| RXAR/CH | Chrome legend panel to suit Royalux (arrow right) |
| RXAD/CH | Chrome legend panel to suit Royalux (arrow down) |
| RXDS/CH | Double sided chrome Royalux legend |



- Choice of colour finish
- Wall or ceiling mounted

SAFE EDGE



- Choice of colour finish
- Suitable for wall or ceiling mounting
- Easy to install



Decorative 8W surface mounted exit sign available in either white, brass or chrome finish and suitable for mounting on either a wall, flat or sloping ceiling. Left/right legend is double sided as standard, suitable for single or double sided use.

Self test versions incorporate a module to automatically carry out regular testing of the complete fitting. This saves effort and cost by avoiding the need to manually carry out the mandatory testing of emergency luminaires.

Standard self contained versions are Kitemarked.

Safe Edge can be modified to operate with the Cooper Lighting and Security Easichack central testing system, please contact the technical sales department for further details.

| Cat. No. | Description |
|--------------|--|
| SED | 3 Hr Maintained Safe Edge (white) |
| SED/CH | 3 Hr Maintained Safe Edge (chrome) |
| SED/GD | 3 Hr Maintained Safe Edge (gold) |
| SED/IS | Self test 3 Hr Maintained Safe Edge (white) |
| SED/CH/IS | Self test 3 Hr Maintained Safe Edge (chrome) |
| SED/GD/IS | Self test 3 Hr Maintained Safe Edge (gold) |
| SED110 | Safe Edge 110V AC DC Slave (white) |
| SED110/CH | Safe Edge 110V AC DC Slave (chrome) |
| SED110/GD | Safe Edge 110V AC DC Slave (gold) |
| SED24 | Safe Edge 24V AC DC Slave (white) |
| SED24/CH | Safe Edge 24V AC DC Slave (chrome) |
| SED24/GD | Safe Edge 24V AC DC Slave (gold) |
| SED50 | Safe Edge 50V AC DC Slave (white) |
| SED50/CH | Safe Edge 50V AC DC Slave (chrome) |
| SED50/GD | Safe Edge 50V AC DC Slave (gold) |
| SED230CG | Safe Edge Ceaguard Slave (white) |
| SED230/CG/CH | Safe Edge Ceaguard Slave (chrome) |
| SED230/CG/GD | Safe Edge Ceaguard Slave (gold) |
| SED/S/230 | Safe Edge Static Inverter Slave (white) |
| SED/S/230/CH | Safe Edge Static Inverter Slave (chrome) |
| SED/S/230/GD | Safe Edge Static Inverter Slave (gold) |
| SEDLR | D/S legend (arrow left/right) |
| SEDS | Legend (single sided arrow down) |
| SEDDSS | Legend (double sided arrow down) |

WAYLITE 800



High performance exit sign supplied with a universal self adhesive legend kit, and incorporating a substantial downlighter panel.

Apart from illuminating the panel to the requirements of EN1838, the fitting also provides significant illumination of the escape route thus minimising the number of additional emergency luminaires necessary to achieve the required lighting levels.

Standard self contained versions are Kitemarked.

Self test versions incorporate a module to automatically carry out regular testing of the complete fitting. This saves effort and cost by avoiding the need to manually carry out the mandatory testing of emergency luminaires.

Waylite 800 can be modified to operate with the Cooper Lighting and Security Easichck central testing system, please contact the technical sales department for further details.

| Cat. No. | Description |
|-----------------|---|
| WL800/8/3M/ICEL | 3 Hr Maintained Waylite 800 |
| WL800/8/3/ICEL | 3 Hr Non-maintained Waylite 800 |
| WL800/3M/IS | Self test 3 Hr Maintained Waylite 800 |
| WL800/3/IS | Self test 3 Hr Non-maintained Waylite 800 |
| WL800/110 | Waylite 800 110V AC DC Slave |
| WL800/24 | Waylite 800 24V AC DC Slave |
| WL800/50 | Waylite 800 50V AC DC Slave |
| WL800/230 | Waylite 800 Static Inverter Slave |

ZED



Low cost 8 Watt double-sided exit sign complete with 2 universal self adhesive legend kits and a decorative skirt.

To enhance the resilience of the product and for ease of installation, the legend kit is fitted to a clear plate which then fastens to the inside of the diffuser.

| Cat. No. | Description |
|-----------------|--|
| ZED8/3M/230-240 | 3 Hr Maintained Zeta double sided exit |
| ZED8/3/230-240 | 3 Hr Non-maintained Zeta double sided exit |
| ZED8/24 | ZED 24V AC DC Slave |
| ZED8/50 | ZED 50V AC DC Slave |
| ZED8/110 | ZED 110V AC DC Slave |
| ZED8/230 | ZED Static Inverter Slave |



- Superior optical design
- Highly effective downlighter
- Supplied with universal legend kit



- Internally mounted legend
- Supplied with decorative skirt
- Quick fit design



- Easy to install
- 2 x 21W lamps
- Weatherproof version available



- Choice of top or side lamp mounting position
- Low cost
- Hinged front cover for ease of installation

BEAMLITE



BeamLite is a high output projector unit, the standard versions are supplied with 2 x 21W lamps and a 3 hour standby. An alternative version is available with 2 x 55W halogen lamps and a 1 hour standby. BeamLite is designed for ease of installation and incorporates a hinged drop down front cover. Lamp fixings are near to the front edge of the body to maximise the amount of possible lamp tilt angle.

A weatherproof version is also available.

2 x 21W versions can be modified to operate with the Cooper Lighting and Security Easichck advanced central testing system, please contact the technical sales department for further details.

| Cat. No. | Description |
|----------|---|
| BEN3 | 3 Hr Non-maintained BeamLite |
| BEN1H | 1 Hr Non-maintained 2x55W BeamLite |
| BEN3/W | 3 Hr Non-maintained weatherproof BeamLite |

GEMINI JUNIOR



Gemini Junior is a low cost, 3 hour, non maintained, 2 x 18W projector unit designed for indoor use.

It incorporates many useful features designed to provide a simple installation in a wide range of applications including a hinged front cover and choice of top or side lamp fixing positions.

Gemini Junior can be modified to operate with the Cooper Lighting and Security Easichck central testing system, please contact the technical sales department for further details.

| Cat. No. | Description |
|-------------------|-----------------------------------|
| GMRJ218/3/230-240 | 3 Hr Non-maintained Gemini Junior |

METROLITE



Metrolite is a Stylish 2 x 12W Tungsten Halogen projector unit with a 3 hour autonomy in the event of mains failure.

Metrolite can be ordered as a composite unit complete with battery, charger and lamp heads, alternatively single or twin remote lamp heads can be purchased which can then be used in conjunction with an external remote power pack such as the Menvier CP/50T.

| Cat. No. | Description |
|---------------|-------------------------------|
| MT12-10/212/3 | 3 Hr Non-maintained Metrolite |
| MT-RL2 | Twin lamp remote head unit |
| MT-RL1 | Single lamp remote head unit |



- Stylish design
- Wide range of lamp positions



- Meets switching thresholds of EN60598-2-22
- Rated to switch 480VAC
- Heavy duty terminals
- Compact size



- Competitively priced
- 4 pole output switching

ACM1



ACM1 is a slave changeover module for static inverter applications, it enables a suitable mains luminaire to operate as a normal switched mains luminaire under normal conditions but to automatically switch over to an alternative emergency supply in the event of failure of the normal unswitched mains supply.

In many cases the normal mains supply will be fed from a different phase to that of the emergency supply. For this reason the switching contacts of the ACM1 are rated to switch up to 480VAC.

| Cat. No. | Description |
|----------|--|
| ACM1 | ACM1 Static inverter slave changeover module |

ADV CONVERSION KITS



Competitively priced conversion kits designed to convert a wide range of mains luminaires using switch start ballasts such that they also operate under emergency conditions.

A converted fitting operates at full output under normal conditions and automatically illuminates at reduced output in the event of mains failure.

For fittings using High frequency ballasts refer to the Menvier QH and HD/HE/EH series conversion kits.

| Cat. No. | Description |
|----------|---|
| ADV343 | 3 cell switch start conversion kit (1200mm lamps) |
| ADV443 | 4 cell switch start conversion kit (1200mm lamps) |
| ADV453 | 4 cell switch start conversion kit (1500mm lamps) |
| ADV553 | 5 cell switch start conversion kit (1500mm lamps) |
| ADV563 | 5 cell switch start conversion kit (1800mm lamps) |

CONVERSION KITS



Q Series kits are compatible with switch start ballasts. They enable a normal fluorescent luminaire to also function as an emergency luminaire. The kit includes low profile module and battery end caps and Utilises 4 pole output switching.

QH Series kits are compatible with HF ballasts. QH features are as Q series plus an additional pole with time delay function to isolate the mains supply to the normal mains ballast thus preventing lockout problems associated with lower cost modules.

| Cat. No. | Description |
|----------|---|
| BQ | 18 - 36 Watt Conversion kit |
| CQ | 36 - 65 Watt Conversion kit |
| DQ | 65-70 W linear & 38-55W Compact lamp Conversion kit |
| BQH | Conversion kit for 18 - 36 Watt HF |
| CQH | Conversion kit for 36 - 65 Watt HF |
| DQH | Conversion kit for 65-70 W HF |
| EH | Conversion kit for 70 - 100 Watt HF linear lamps |
| HC1 | Conversion kit for 14W & 21W TL5 & 18W PLT |
| HD1 | Conversion kit for 26W, 32W and 42W PLT lamps |
| HD2 | Conversion kit for 28W & 35W TL5 lamps |
| HE1 | Conversion kit for 24W, 39W & 49W TL5 lamps |

A wide range of remote enclosures is available if required. Factory conversions is also available if required.



- High frequency compatible
- 4 pole output switching
- Isolates switched live in emergency/test mode
- Low profile design

CONVERTAPACK



Convertapack is designed for use with 12V tungsten downlighters, the unit can support a load of 50W for 3 hours or 100W for 1 hour.

Convertapacks can be modified to operate with the Cooper Lighting and Security Easichck advanced central testing system, please contact the technical sales department for further details.

| Cat. No. | Description |
|----------|-------------------|
| CP/50T | 3 Hr Convertapack |



- Allows 50W downlighter to be used for mains and emergency
- Full output in emergency mode
- Can be used with remote maintained transformer



- **Compact dimensions**
- **Lightweight**
- **Low cost**
- **Maintained output - no external transformer required**

MPAR CONVERSION UNIT



The MPAR conversion module is designed to convert a 12V tungsten downlighter so that it can also function as an emergency luminaire.

It has a built in mains transformer controlled by a separate switched live supply to operate the lamp during normal conditions with automatic transfer to battery power in the event of mains failure.

A clever feature of the MPAR unit is that in normal mode the output is 12V providing full light output from the lamp but in emergency mode the output automatically reduces to 6V thereby reducing the output of the lamp to a value appropriate for emergency operation.

This reduces both the cost and the weight of the module significantly.

| Cat. No. | Description |
|------------------|-----------------------------------|
| MPAR/6/M/230-240 | Conversion unit for 12V 50W lamps |



- **Automatically monitors local unswitched mains supply**
- **Reduced lamp output reduces battery unit loading**

SLAVE CONVERSION MODULES



The SMCB range is designed to operate in conjunction with an AC/DC central battery system enabling a normal fluorescent luminaire to also function as an emergency luminaire.

SMCB modules have a 4 pole output and are designed for switch start ballasts.

| Cat. No. | Description |
|----------|---|
| SMCB110 | SMCB 110V AC DC slave conversion module |
| SMCB24 | SMCB 24V AC DC slave conversion module |
| SMCB50 | SMCB 50V AC DC slave conversion module |



CONTENTS (FIRE)

Cooper Lighting and security offers a complete range of fire detections systems.

The range of conventional systems varies from the simple low cost MF200 & MF400 series of panels to the high specification MF9300 series. A diverse offering of Analogue systems is also available from low cost FX3302/ECO systems to the high tier, multi loop, fully Networkable DF4000 system.

A full range of compatible detectors, callpoints sounders and ancillaries is offered for each system. This enables the selection of a complete fire system from a single supplier thus ensuring full compatibility.

Full pre and post purchase support is provided by our technical support department and an extensive service department provides a full commissioning and ongoing routine maintenance service.

Control Panels

| | |
|---|-----------|
| Menvier MF200/MF400 | 36 |
| JSB FX2200 series | 36 |
| JSB Bi wire panels | 37 |
| Menvier MF9300 series panels | 37 |
| MF9300 repeater panels | 38 |
| Fire alarm log book | 38 |
| Conventional Detectors (Menvier) | 39 |
| Conventional Detectors (JSB) | 39 |
| Biwire Detectors | 40 |
| Duct probes | 40 |
| Reflective Beam Detectors | 40 |
| Conventional Callpoints | 41 |
| Weatherproof Callpoints | 41 |

Spares and Accessories

| | |
|---|----|
| Continuity links | 42 |
| Flush bezel | 42 |
| Hinged cover | 42 |
| Resettable element kit | 43 |
| Replacement glass elements for callpoints | 43 |
| Test key | 43 |

| | |
|--|-----------|
| Bells, Sounders and Beacons | |
| Bi Wire sounders | 44 |
| Bells | 44 |
| Shallow base surface sounders | 45 |
| Deep base sounders | 45 |
| Flush sounders | 46 |
| High output sounder | 46 |
| Low current sounder | 47 |
| Base mounted sounder | 47 |
| Speech sounders | 48 |
| Discreet sounders | 48 |
| Xenon beacons | 49 |
| Combined sounder beacons | 49 |
| Door Release Units | 50 |
| Mains Powered Detectors | 50 |
| Analogue Fire System | |
| FX3302/ECO | 51 |
| FX3302/ECO detectors | 51 |
| FX3302/ECO callpoints | 52 |
| FX3302/ECO sounders | 52 |
| FX3302/ECO interfaces | 53 |
| FX3302/SS | 53 |
| Detectors to operate with FX3302/SS | 54 |
| Callpoints to operate with FX3302/SS | 54 |
| Sounders to operate with FX3302/SS | 55 |
| Analogue Interfaces to Operate with FX3302/SS | |
| FX3302/SS input monitor | 55 |
| FX3302/SS zone monitor | 56 |
| Control/sounder unit | 56 |
| DF1000 | 57 |
| DF4000 | 57 |
| Network devices for use with DF4000 | 58 |
| Detectors for DF1000 and DF4000 | 58 |
| Callpoints for DF1000 and DF4000 | 59 |
| Sounders for DF1000 and DF4000 | 59 |
| Address headers for DF1000 and DF4000 | 60 |
| Interfaces to suit DF1000 or DF4000 | |
| MPU244A | 60 |
| MPU244R | 61 |
| MIU771 | 61 |
| MIO230 | 62 |
| MSI750 | 62 |
| Slimline mimic panel | 63 |



- One man walk test facility
- Large choice of cable entry facilities
- Supplied with batteries
- Supplied with all end of line devices



- EN54 approved
- Supplied with battery
- Supplied with end of line devices
- Charger temperature compensation
- Supports repeater panel

MF200/MF400



MF200 & MF400 are low cost panels, which are supplied complete with battery and end of line monitoring devices. The products are ideal for small installations where cost and simplicity of operation are the prime considerations.

24V outputs are provided for remote signalling of fire and fault conditions, these can be converted to relay outputs by use of the MAR424 relay board which fits inside the fire alarm enclosure.

| Cat. No. | Description |
|----------|---|
| MF200 | 2 zone low cost conventional panel - 24Hr Standby |
| MF400 | 4 zone low cost conventional panel - 24Hr Standby |
| MF400-72 | 4 zone low cost conventional panel - 72Hr Standby |
| MAR424 | Fire and fault relay PCB |

FX2200 SERIES



The FX2200 series is a range of fire panels designed for maximum flexibility and suitable for a wide range of projects. Installation time is kept to a minimum by providing a wide choice of cable entry facilities, conveniently located terminations and a single battery.

FX2208 panels are compatible with repeater panels as standard, If a repeater is required for 2 and 4 zone panels, FX2202/CR or FX2204/CR control panels should be ordered instead.

| Cat. No. | Description |
|---------------|--|
| FX2201 | 1 zone conventional control panel |
| FX2202 | 2 zone conventional control panel |
| FX2204 | 4 zone conventional control panel |
| FX2208 | 8 zone conventional control panel |
| FX2202/CR | 2 zone panel configured for use with a repeater |
| FX2204/CR | 4 zone panel configured for use with a repeater |
| FXRP2200 | 8 Zone repeater panel for use with FX2208, FX2204/CR and FX2202/CR |
| FX2200/3300MB | Metal back box for semi recessing of FX2202, FX2204 and FX2208 |

BI WIRE



The FX2200/BW series of panels uses patented technology to enable the detector and sounder wiring for each zone to share a common pair of cables.

This considerably reduces the amount of time and cabling required to install a system. Installation time is also reduced by the provision of a wide choice of cable entry facilities on the panel enclosure, conveniently located terminations and a single battery.

| Cat. No. | Description |
|-----------|-----------------------------------|
| FX2201/BW | 1 zone conventional control panel |
| FX2202/BW | 2 zone conventional control panel |
| FX2204/BW | 4 zone conventional control panel |
| FX2208/BW | 8 zone conventional control panel |



- Supplied with battery
- Supplied with end of line devices
- Charger temperature compensation

MF9300 SERIES



MF9300 series panels have been specifically designed to meet the requirements of EN54 parts 2 & 4 1998 and BS5839 part 1 installation whilst retaining the Menvier traditions associated with ease of installation and operation.

The stylish control panel is suitable for either flush or surface mounting without the need for any separate bezels or back boxes.

| Cat. No. | Description |
|----------|--|
| MF9302 | High specification 2 zone panel 72 hour standby |
| MF9304 | High specification 4 zone panel 72 hour standby |
| MF9308 | High specification 8 zone panel 72 hour standby |
| MF9308-L | High specification 8 zone panel 24 hour standby |
| MF9316 | High specification 16 zone panel 72 hour standby |
| MF9316-L | High specification 16 zone panel 24 hour standby |



- Up to 32 detectors per zone
- 72 hour standby on standard versions
- One man walk test
- Non latching zone facility for interlinking etc
- 4 zone panels and above support repeater panel as standard via 2 wire link



- Flush or surface fixing
- Supplied with batteries
- 2 core connection to main panel



- Large A4 format

MFR9300 REPEATER PANELS



MFR9308 is a repeater designed to operate with MF9304 and MF9308 control panels.

MFR9316 is designed to operate with MF9316 control panels. Communication is via a 2 core cable which transmits serial data. Repeater panels are supplied with standby batteries and require a local mains supply.

| Cat. No. | Description |
|----------|--|
| MFR9308 | 8 zone repeater complete with batteries |
| MFR9316 | 16 zone repeater complete with batteries |

FIRE ALARM LOG BOOK



A preformatted fire alarm logbook designed for the recording of all fire alarm events, tests and remedial actions, provides documentary proof of correct system testing and maintenance.

| Cat. No. | Description |
|----------|---------------------|
| MFALOG | Fire alarm log book |

CONVENTIONAL DETECTORS



The latest Menvier 800/900 series conventional detectors and bases have been specifically designed to operate with Menvier fire panels.

They incorporate a number of features such as heavy duty terminals to maximise installation versatility and minimise installation time. The base also incorporates a detector locking device, which can be activated as required to prevent unauthorised detector removal.

Please note a maximum of 5 MPT950 detectors can be connected to any zone of an MF200 or MF400 control panel.

| Cat. No. | Description |
|-----------|--|
| MPD820 | Conventional optical smoke detector |
| MID810 | Conventional Ionisation smoke detector |
| MFR830 | Conventional heat detector (fast response) |
| MMT860 | Conventional heat detector (medium response) |
| MHT890 | Conventional heat detector (high temperature) |
| MPT950 | Conventional combined photo/ thermal detector |
| MDB800 | Common mounting base for 800 series detectors |
| MDB800*10 | Common mounting base for 800 series detectors (pack of 10) |
| FX251/C | Remote indicator for use with Menvier and JSB detectors |



- LPCB approved
- Ultra low profile
- Separate loop in and loop out connections
- Base incorporates features to support surface wiring
- 360° viewing angle LED

CONVENTIONAL DETECTORS



The latest JSB 500/600 series conventional detectors and bases have been specifically designed to operate with JSB fire panels. They incorporate a number of features such as heavy duty terminals to maximise installation versatility and minimise installation time. The base also incorporates a detector locking device, which can be activated as required to prevent unauthorised detector removal.

| Cat. No. | Description |
|----------|---|
| FX523 | Conventional optical smoke detector |
| FX521 | Conventional Ionisation smoke detector |
| FX524 | Conventional fixed temperature heat detector (77°) |
| FX525 | Conventional rate of rise heat detector |
| FXN526 | Conventional fixed temperature heat (92°) detector |
| FXN622 | Conventional combined photo/thermal detector |
| FXN520 | Common mounting base for FXN520 series detectors |
| FX251/C | Remote indicator for use with Menvier and JSB detectors |



- LPCB approved
- Ultra low profile
- Separate loop in and loop out connections
- Base incorporates features to support surface wiring
- 360° viewing angle LED



- Dual LED's for ease of identification



- Clear cover for ease of examining detector status



- Includes low level controller
- 100 Metre range

BI WIRE DETECTORS



The FX220 series of detectors are designed to operate with JSB Bi wire systems when used in conjunction with a purpose designed Bi wire base.

The range of available detectors includes an optical smoke detector, ionisation smoke detector and choice of heat detectors.

| Cat. No. | Description |
|----------|--|
| FX223 | Conventional optical smoke detector |
| FX221 | Conventional Ionisation smoke detector |
| FX224 | Conventional fixed temperature heat detector (78°) |
| FX225 | Conventional rate of rise heat detector |
| FX220/BW | Common Bi wire mounting base for FXN220 series detectors |

DUCT PROBES



Duct probes are designed for use with the Menvier or JSB photoelectric smoke detectors via either a standard or addressable mounting base. The presence of smoke in ventilation ducting is detected by sampling the airflow through it. The detector and base are mounted in the sampling chamber, which is fixed to the outside of the ducting with input and exhaust probes passing into the duct. The duct probe is supplied with full fixing instructions including a mounting template.

| Cat. No. | Description |
|----------|--|
| MDP201 | Duct probe (requires separate detector and base) |

BEAM DETECTORS



Consists of a transmitter, receiver and low level controller. The system operates by projecting an infra red beam across the protected area.

The Beam detector can cover a maximum span between the transmitter and receiver of up to 100 Metres making it ideal for applications where access for installation and maintenance of point detectors would prove difficult.

The transmitter and receiver are connected to a separate control unit which is normally mounted at low level for ease of maintenance.

| Cat. No. | Description |
|----------|---------------------------------------|
| MBD100A | Beam detector to suit Menvier systems |
| FX2000 | Beam detector to suit JSB systems |

CONVENTIONAL CALLPOINTS



An attractively designed range of flush and surface callpoints, designed for good looks and ease of installation, including features such as a fast fit self locking clip on front cover. Each callpoint is supplied with a dual function test key which is used to test the callpoint and also to remove the front cover during installation and when replacing the glass.

LED versions include an LED indicator, which illuminates when the callpoint is activated, designed to assist with rapid identification.

| Cat. No. | Description |
|---|---|
| Standard callpoints to suit Menvier MF200, MF400 and MF9300 panels | |
| MBG914 | Surface callpoint |
| MBG913 | Flush callpoint |
| MBG914/L | Surface callpoint c/w LED |
| Standard callpoints to suit JSB FX2200 and FX2200/BW series panels | |
| FX201 | Surface callpoint |
| FX201/L | Surface callpoint c/w LED (not suitable for use with Bi wire systems) |

WEATHERPROOF CALLPOINTS



A range of heavy duty, weatherproof surface callpoints. Each callpoint is supplied with a dual function test key which is used to test the callpoint and also to remove the front cover during installation and when replacing the glass.

LED versions include an LED indicator, which illuminates when the callpoint is activated, designed to assist with rapid identification.

| Cat. No. | Description |
|--|--|
| Weatherproof callpoints to suit Menvier MF200, MF400 and MF9300 series panels | |
| MBG917 | Weatherproof surface callpoint |
| MBG917/L | Weatherproof surface callpoint c/w LED |
| Weatherproof callpoints to suit JSB FX2200 and FX2200/BW series panels | |
| FX203 | Weatherproof surface callpoint |
| FX203/L | Weatherproof surface callpoint c/w LED (not suitable for use with Bi wire systems) |



- Hinged protective cover available
- Resettable element available
- Versions available with LED for ease of identifying status.
- Fast fit clip on front cover



- Hinged protective cover and resettable element available
- Optional LED for ease of identifying status.
- Heavy duty gasketted Allen key fixed back box

- Provides continuity when used with plastic back boxes



- Stylish design
- Easy to install
- Purpose designed



- Clips over front of callpoint
- Can be retro fitted

CONTINUITY LINKS



Designed to provide continuity from gland to gland when cables are installed into plastic callpoint back boxes.

| Cat. No. | Description |
|----------|----------------------------|
| MBG119 | Pack of 5 continuity links |

FLUSH BEZEL



An attractive bezel designed for use with flush mounted, callpoints (not compatible with weatherproof callpoints) supplied in packs of 10

| Cat. No. | Description |
|----------|--|
| MBGBEZ | Pack of 10 bezels for standard FX & MBG callpoints |

HINGED COVER



Protective hinged cover designed to prevent accidental activation of callpoints, ideal for use in warehouses, factories, schools etc.

| Cat. No. | Description |
|----------|--|
| MBGHCC | Protective hinged cover for callpoints |

RESETTABLE ELEMENT KIT



Designed to replace the standard glass element in applications where the use of glass elements would not be acceptable or where speed and simplicity of resetting after activation are important.

The resettable element contains a high visibility flag to provide clear indication of when the callpoint has been triggered. Supplied in packs of 10

| Cat. No. | Description |
|----------|-------------------------------------|
| MBGREKIT | Resettable element kit (pack of 10) |

REPLACEMENT GLASS ELEMENTS



Call points contain glass elements, which are designed to break under slight pressure thus triggering the callpoint and activating the alarm.

It is recommended that replacement glass elements be held locally at all times.

| Cat. No. | Description |
|----------|---|
| FX5G | Pack of 5 spare glasses (JSB branded) |
| MBG118 | Pack of 5 spare glasses (Menvier branded) |

TEST KEY



A test keyswitch is supplied with every callpoint, if these are misplaced then replacements are available in packs of 10. As well as being used to test the callpoint, the test keyswitch is also used to open the callpoint for installation purposes and to enable replacement of the glass element.

| Cat. No. | Description |
|----------|--------------------------------------|
| MFBGKEY3 | Test Keyswitches new type pack of 10 |



- Direct replacement for glass element
- Flag to indicate status
- Can be retrofitted

- Protective plastic film to prevent contact with broken glass



- Enables simple callpoint testing
- Allows rapid removal of front cover for glass element replacement



- High output option
- Base mounted option



- Low current
- Large cable terminals
- Multi fixing base plate

Bi WIRE SOUNDERS



Bi wire sounders contain special additional circuitry to enable them to be connected on the same pair of cables as the detector wiring for a particular zone, they are not suitable for use on other types of panel.

A base mounted sounder is available which incorporates an FX220/BW detector mounting base and includes a blanking plate for use when the unit is used as a stand alone sounder. For applications requiring a higher sound output a stand alone high output Biwire sounder is available.

| Cat. No. | Description |
|-----------|-----------------------------|
| FX220/BWS | Bi-wire sounder base |
| FX009 | High output Bi-wire sounder |

BELLS



A wide range of bells comprising both internal and external versions.

| Cat. No. | Description |
|----------|----------------------------------|
| MBM244 | Menvier 4" Internal 24V bell |
| MBM246 | Menvier 6" Internal 24V bell |
| MBM248 | Menvier 8" Internal 24V bell |
| MMB240 | Menvier 6" Mains powered bell |
| MWB824 | Menvier 8" Weatherproof 24V bell |
| FX006 | JSB 6" Internal 24V bell |

SHALLOW BASE SOUNDERS



Shallow base sounders are suitable for internal use and have facilities for rear entry cables.

| Cat. No. | Description |
|-----------|--|
| FX002 | JSB Red low profile sounder |
| FX002/W | JSB White low profile sounder |
| MWS424/SB | Menvier Red low profile sounder |
| MWS424/DB | Menvier Red deep base weatherproof sounder |

DEEP BASE SOUNDERS



Deep base sounders have all the features of shallow base sounders but in addition have the advantages of being weatherproof and being able to accept surface as well as rear entry cables, this makes them slightly deeper than their shallow based equivalents.

| Cat. No. | Description |
|------------|--|
| MWS424/DB | Menvier red deep base weatherproof sounder |
| FX000/WP | Red deep base to adapt shallow base devices to deep base (sounder sold separately) |
| FX000/W/WP | White deep base to adapt shallow base devices to deep base (sounder sold separately) |



- Low profile design
- 32 selectable tones
- Volume control
- Separate input and output terminals



- 32 selectable tones
- Volume control
- Separate input and output terminals



- Low profile design
- Choice of colours
- Volume control



- High output
- Easy to assemble snap together design

FLUSH SOUNDERS



Flush mounting red or white sounders with similar sound characteristics to MWS424 and FX002 sounders. Designed to fix into a single gang deep back box, suitable for internal locations only. A red back box is available for surface fixing applications.

| Cat. No. | Description |
|----------|---|
| FX003 | JSB Red flush sounder |
| FX003/W | JSB White flush sounder |
| MFS324 | Menvier Red flush mounting sounder |
| MFS324/W | Menvier White flush mounting sounder |
| ZMBGBBOX | Red single gang deep back box for surface installation of MFS324 or FX003 |

HIGH OUTPUT SOUNDER



FX007 is a high output sounder, depending on the chosen tone, sound outputs of up to 120dB(A) can be achieved.

The sounder is easy to install, the body is fastened to the mounting base by means of heavy duty clips enabling rapid but secure opening and assembly.

Care needs to be taken to ensure that the sounder current consumption (240mA) is within the capacity of the control panel sounder circuit.

| Cat. No. | Description |
|----------|--------------------------------------|
| FX007 | High output red wall mounted sounder |

LOW CURRENT SOUNDER



MLC624 is a high output low current sounder which produces 100dBA output yet has a current consumption of only 5mA. It is designed for applications where a large number of sounders need to be used and there is a possibility of overloading the sounder circuits or where long cable runs are involved and cable voltage drops have to be kept to a minimum.

| Cat. No. | Description |
|----------|--------------------------------|
| MLC624 | Low current electronic sounder |



- Low current consumption
- High sound output
- Easy to install

BASE MOUNTED SOUNDER



The MDS724 is designed to reduce installation time by allowing a detector and a ceiling mounted sounder to be fixed at a single point.

A blanking plate is available for use when the MDS724 is being used as a stand alone sounder without a detector.

| Cat. No. | Description |
|----------|------------------------------------|
| MDS724 | Ceiling mounted sounder |
| FASP1824 | Blanking plate for use with MDS724 |



- Low profile design
- Reduces installation time
- Discreet appearance
- Blanking plate available



- Easy to install
- 100dB(A) output
- Clear intelligible human speech
- Low current consumption
- Automatic synchronisation



MAS175

- Designed to discreetly attract management attention
- Combined audible and visual alarm

SPEECH SOUNDERS



Speech sounders offer superb speech clarity with a high sound output and low current consumption. When supplied with 24VDC the sounder first emits an attention grabbing alarm tone followed immediately by instructions as to the required action. The tone and message then repeat for as long as power is applied.

Different versions of the product are available with different messages, available options are:

- A: "In the interests of safety please evacuate the building now."
 B: "Ladies and gentlemen, due to unforeseen circumstances it is necessary to ask you to leave the building immediately using the nearest available exit, or as indicated by the staff"
 C: "Fire! Fire! Please leave the building. Fire! Fire! Leave the building."

| Cat. No. | Description |
|----------|---|
| MSS7MR | 24V Speech sounder red body - Message A |
| MSS20MR | 24V Speech sounder red body - Message B |
| MSS28MR | 24V Speech sounder red body - Message C |
| MSS7MW | 24V Speech sounder white body - Message A |
| MSS20MW | 24V Speech sounder white body - Message B |
| MSS28MW | 24V Speech sounder white body - Message C |

DISCREET SOUNDERS



Discreet Personnel alert units complete with audible buzzer and LED indicator.

FX255 is a compact unit designed to mount onto a single gang back box, MAS175 is a larger unit incorporating twin, high intensity LED's and designed to mount onto a double gang back box.

| Cat. No. | Description |
|----------|----------------------|
| FX255 | Personnel alert unit |
| MAS175 | Personnel alert unit |

XENON BEACONS



High efficiency, xenon beacons designed for use in applications where visual warning is required such as areas where high ambient noise is present or areas where the occupants may be hard of hearing.

Beacons are available with shallow low profile bases with predrilled fixing and cable entry holes or weatherproof deep bases.

| Cat. No. | Description |
|-----------|--|
| FX004/R | JSB 1 Watt Xenon beacon shallow base (Red) |
| FX004/A | JSB 1 Watt Xenon beacon shallow base (Amber) |
| FX004/B | JSB 1 Watt Xenon beacon shallow base (Blue) |
| FX005/R | JSB 2 Watt Xenon beacon shallow base (Red) |
| FX005/A | JSB 2 Watt Xenon beacon shallow base (Amber) |
| FX005/B | JSB 2 Watt Xenon beacon shallow base (Blue) |
| MXB124/SB | Menvier 1 Watt Xenon beacon shallow base (Red) |
| MXB224/SB | Menvier 2 Watt Xenon beacon shallow base (Red) |
| MXB124/DB | Menvier Weatherproof 1 Watt Xenon beacon (Red) |
| MXB224/DB | Menvier Weatherproof 2 Watt Xenon beacon (Red) |

SOUNDER BEACONS



Combined sounder beacons are designed to provide a quick to install, neat solution for applications where both audible and visual fire warning is required.

| Cat. No. | Description |
|-----------|--|
| MCD524/DB | Menvier Weatherproof Deep base combined sounder beacon (Red) |
| MCD524/SB | Menvier Low profile combined sounder beacon (Red) |
| FX002/CR | JSB Low profile combined sounder beacon (Red) |
| FX002/CA | JSB Low profile combined sounder beacon (Amber) |
| FX002/CB | JSB Low profile combined sounder beacon (Blue) |



- Anti surge design
- Weatherproof deep base version available



- Attractive styling
- Anti surge design
- Weatherproof deep base versions available



- Mains and 24V versions available
- Manual release facility
- Supplied with door plate
- Optional floor mounting brackets available.



- Stand alone mains powered detectors
- Battery backup in the event of mains failure
- Thermal, optical and ionisation types available

DOOR RELEASE UNITS



Magnetic door release units are designed to enable a fire door to be kept open during normal conditions but to allow them to close of their own accord should an alarm condition occur. The door must be fitted with a self closing mechanism.

| Cat. No. | Description |
|--------------|---|
| MDR24L | 24 volt door release unit |
| MDR240 | Mains voltage door release unit |
| ZMDRFBB | Floor mounting bracket for MDR door release units |
| FX021/240/LC | Low cost Mains voltage door release unit |
| FX021/24V/LC | Low cost 24 volt door release unit |
| FX021/LC/FB | Floor mounting bracket for FX021/LC door release units |
| FASP0429 | 24VDC 1A power supply suitable for 24V door release units |
| MAR724 | Heavy duty relay for interfacing door release units with fire alarm panel |

MAINS POWERED DETECTORS



Mains powered smoke detectors are required by the building regulations for certain areas, although designed for stand alone operation, connection facilities are available for interlinking of detectors so that all sounders operate if a single detector is triggered.

| Cat. No. | Description |
|----------|--|
| MID240/B | Mains Ionisation detector with battery backup |
| MPD240/B | Mains photoelectric detector with battery backup |
| MHD240 | Mains heat detector with battery backup |
| MSK240 | Surface mounting pattress suitable for MPD240/B |
| MDB240 | Mounting base with relay. Suitable for MPD240/B |

FX3302/ECO



FX3302/ECO is a 2 loop analogue addressable fire control panel to operate with JSB ECO analogue devices.

The system is designed to bridge the gap between conventional and analogue systems by providing the ease of installation and simplicity associated with conventional systems whilst at the same time providing the benefits of an intelligent analogue addressable system such as pinpoint device location and loop instead of zonal wiring.

| Cat. No. | Description |
|------------|---|
| FX3302/ECO | Low cost Analogue addressable control panel |



- **Soft addressing**
- **Self learn technology**
- **64 devices plus up to 32 sounders per loop**

FX3302/ECO DETECTORS



ECO detectors are soft addressed, the panel automatically allocates the address to each device during commissioning. The optical smoke detector has built in drift compensation.

Connections are by means of a separate common base, which incorporates a locking device that can be activated to prevent unauthorised removal of the detector.

| Cat. No. | Description |
|----------|---|
| ECO2003 | Self addressing intelligent optical detector |
| ECO2005 | Self addressing intelligent fixed temperature heat detector |
| ECO2000B | Common mounting base for ECO2000 series detectors |



- **Soft addressed**
- **Built in short circuit isolator**

FX3302/ECO CALLPOINTS



ECO2001 is a soft addressed callpoint, which includes a short circuit isolator.

Each callpoint requires a separate back box and glass element, glass elements are supplied in packs of 5.

| Cat. No. | Description |
|---------------|---|
| ECO2001 | Manual callpoint to suit ECO2000 systems |
| FX301/SR3-T/P | Back box for FX301 and ECO2001 |
| FX301/ETT/P | Recessing terminal tray for FX301 and ECO2001 |
| FX5G | Pack of 5 spare glasses (JSB) |



- Soft addressed
- Built in short circuit isolator



- Base mounted and stand alone versions
- 3 preset volume levels
- Simple rotary address settings

FX3302/ECO SOUNDERS



2 different sounders are available for use with FX3302/ECO a detector base sounder and a stand alone sounder. Both sounders are addressable and can be set to operate at a choice of 3 different sound levels.

The stand alone sounder (FX338/LPS) requires a mounting back box (ordered separately).

| Cat. No. | Description |
|-----------|---|
| FX338/LBS | Base mounted loop powered addressable sounder |
| FX338/LPS | Stand alone loop powered addressable sounder |
| FX338/SSB | Mounting base for FX338/LPS |

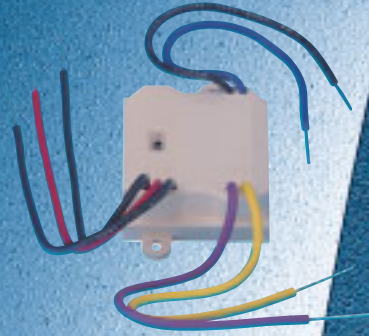
FX3302/ECO INTERFACES



ECO200M is a compact input interface for use with FX3302/ECO.

It is able to discriminate between alarm signals, open circuit faults and short circuit faults.

| Cat. No. | Description |
|----------|---|
| ECO2000M | Soft addressed intelligent input module |



- **Soft addressed**
- **Incorporates short circuit isolator**
- **Monitors open and short circuit faults**

FX3302/SS



FX3302/SS is a 2 loop analogue addressable fire control panel to operate with JSB analogue detectors. It can accommodate up to 198 devices per loop. User interface is by means of the 5 button keypad and clear backlit LCD display.

For larger projects, up to 64 FX3302/SS systems can be networked together.

Networked systems (including repeaters) require an additional network interface to be fitted to each control panel. These panels must be supplied to special order, contact technical sales for further information.

| Cat. No. | Description |
|-------------|--|
| FX3302/SS | Analogue addressable control panel |
| FXRP3302/SS | Passive repeater for use with FX3302/SS |
| EC170 | High speed printer for Easichack or FX3302 systems |



- **Up to 198 addresses per loop**
- **Compact enclosure**
- **16 LED zonal indicators**



- **Dual LED'S for maximum visibility with minimum travel distance**
- **Simple addressing utilising rotary switches**
- **Locking facility on base**



- **Simple rotary addressing**
- **Integral LED status indicator**

FX3302/SS DETECTORS



Detectors have dual LED's enabling a 360° viewing angle to aid rapid confirmation of the alarm location.

| Cat. No. | Description |
|----------|--|
| FX331 | Analogue addressable ionisation smoke detector |
| FX333 | Analogue addressable optical smoke detector |
| FX334 | Analogue addressable heat detector 58°C response |
| FX335 | Analogue addressable heat detector rate of rise |
| FX336 | Analogue addressable heat detector 78°C response |
| FX330 | Common mounting base for FX330 series detectors |
| FX330/RL | Common mounting base with relay for FX330 series detectors |
| FX330/I | Mounting base for FX330 series, with integral short circuit isolator |

FX3302/SS CALLPOINTS



Both standard and weatherproof type callpoints are available to suit FX3302/SS.

Callpoints require a back box and glass element which need to be ordered separately, glass elements are supplied in packs of 5.

A recessing terminal tray is also available to allow greater depth for terminating cables and provides a simple first fix connection arrangement.

| Cat. No. | Description |
|---------------|--|
| FX301 | Manual callpoint to suit JSB FX3302/SS systems |
| FX303 | Weatherproof callpoint to suit JSB FX3302/SS |
| FX301/SR3-T/P | Back box for FX301 |
| FX301/ETT/P | Recessing terminal tray for FX301 |
| FX5G | Pack of 5 spare glasses (JSB) |

FX3302/SS SOUNDERS



2 different sounders are available for use with FX3302/SS a detector base sounder and a stand alone sounder. Both sounders are addressable and can be set to operate at a choice of 3 different sounder levels.

The stand alone sounder (FX338/LPS) requires a mounting back box (ordered separately).

| Cat. No. | Description |
|-----------|---|
| FX338/LBS | Base mounted loop powered addressable sounder |
| FX338/LPS | Stand alone loop powered addressable sounder |
| FX338/SSB | Mounting base for FX338/LPS |



- Base mounted and stand alone versions
- 3 preset volume levels
- Simple rotary address settings



FX3302/SS INPUT MONITOR



FX338/SMU and FX338/MMU are switch monitor units designed to activate a fire alarm system in response to the operation of an external switch such as sprinkler flow switch.

FX338/MMU has very compact dimensions designed for use in enclosures where only limited space is available. Both modules are capable of discriminating between alarm signals, open circuit faults and short circuit faults.

| Cat. No. | Description |
|-----------|--|
| FX338/SMU | Analogue addressable switch monitoring unit |
| FX338/SMB | Surface mounting box for FX338 modules (not FX338/MMU) |
| FX338/MMU | Analogue addressable micro module |



- Simple rotary switch address setting
- Compact dimensions



- Can be arranged to monitor external power supply status
- Simple rotary switch address setting



- LED status indicator
- Choice of operating modes (voltage free or supervised)
- Simple rotary switch decimal address setting

FX3302/SS ZONE MONITOR



FX338/ZMU is an input module compatible with JSB FX3302/SS systems, designed to provide an interface between a zone of conventional 2 wire detectors and a JSB FX3302/SS system. It can also be used to enable a conventional beam detector to be interfaced with an FX3302/SS fire system.

Requires a separate power supply to power detectors.

| Cat. No. | Description |
|-----------|---|
| FX338/ZMU | Analogue addressable zone monitoring unit |
| FX338/SMB | Surface mounting box for FX338 modules |

CONTROL/SOUNDER UNIT



FX338/COU is an output module compatible with JSB FX3302/SS systems, designed either to provide a voltage free remote output signal or to operate as an external sounder circuit control relay. When used as a sounder circuit control relay (in conjunction with an external power supply,) the module can be arranged to provide monitoring of the wiring to the external device.

| Cat. No. | Description |
|-----------|--|
| FX338/COU | Analogue addressable output control unit |
| FX338/SMB | Surface mounting box for FX338 modules |

DF1000



Single loop analogue addressable fire control panel to operate with Menvier analogue detectors. Up to 120 devices can be connected to the loop .

For maximum flexibility DF1000 is available with a range of different sized power supplies, (ordered separately) and a separate optional printer is also available

| Cat. No. | Description |
|----------|------------------------------------|
| MFDF1000 | Analogue addressable control panel |
| MFDFP07 | 7A/H power supply for DF1000 |
| MFDFP12 | 12 A/H power supply for DF1000 |
| MFDFP17 | 17 A/H power supply for DF1000 |
| MFDFP24 | 24 A/H power supply for DF1000 |
| MFDF51P | Printer for DF1000 |



- User friendly operation
- 16 LED zonal indicators
- Large LCD display
- Simple plug in address technology

DF4000



DF4000 is a sophisticated analogue addressable fire control panel, designed to be versatile, simple to install and easy to operate. DF4000 can operate as a stand alone panel or can be networked for large installations, many options are available such as integral printers to enable the system to be customised to suit exact requirements.

For ease of installation of 2 and 4 loop units, the control panel and power supply are supplied in separate matching stylish enclosures.

Single loop versions are supplied as a single enclosure with integral power supply.

| Cat. No. | Description |
|------------|--|
| MFAXASL1 | 1 Loop DF4000 analogue control panel |
| MFAXASL1/P | 1 Loop DF4000 analogue control panel c/w printer |
| MFAXA2 | 2 Loop DF4000 analogue control panel |
| MFAXA2/P | 2 Loop DF4000 analogue control panel c/w printer |
| MFAXA2/P10 | 2 Loop DF4000 panel c/w printer & 10A PSU |
| MFAXA4 | 4 Loop DF4000 analogue control panel |
| MFAXA4/P | 4 Loop DF4000 analogue control panel c/w printer |
| MFAXA4/P10 | 4 Loop DF4000 panel c/w printer & 10A PSU |
| MFAREP | DF4000 repeater. |



- Simple plug in address header technology
- Up to 120 devices per loop
- Large backlit LCD display
- Fully networkable

- Enables multiple panels to be networked
- Events displayed on all networked panels

NETWORK DEVICES FOR DF4000



Menvier DF4000 panels can be networked to produce large systems. When a fire or fault condition is detected at any individual panel, a message is passed to all other panels on the system.

Networking can prove very cost effective as detector loop and sounder circuit wiring only have to be fed back to a local panel instead of to a single large centrally located panel.

| Cat. No. | Description |
|----------|---|
| MFASC | Analogue serial communication interface |
| MFACI | Analogue communication driver unit |



- Simple plug in address header
- Low profile
- Detector locking facility concealed in base

DETECTORS FOR DF1000 & DF4000



3 types of detectors are available for use with DF1000 and DF4000 systems, an Ionisation smoke detector, an optical smoke detector and a heat detector, which can be programmed to operate as either a fixed temperature or rate of rise device. Detectors are connected via a common mounting base that has a detector locking facility and separate terminals for loop in and loop out connections for ease of installation.

| Cat. No. | Description |
|-----------|--|
| MAP720S | Analogue addressable optical smoke detector |
| MAI710S | Analogue addressable ionisation smoke detector |
| MAH730S | Analogue addressable heat detector |
| MDB700 | Common mounting base for 700 series detectors |
| MDB700*10 | Common mounting base for 700 series detectors (pack of 10) |

CALLPOINTS FOR DF1000 & DF4000



MBG613 and MBG617 callpoints utilise the same simple plug in addressing technique as the Menvier analogue detectors. MBG617 is a weatherproof version for exterior applications, a hinged cover is available to protect the glass element from accidental damage.

| Cat. No. | Description |
|----------|--|
| MBG613 | Callpoint to suit Menvier Addressable systems |
| MBG617 | Weatherproof callpoint to suit Menvier systems |
| MBGHCC | Protective hinged cover for Callpoints |
| MBG118 | Pack of 5 spare glasses (Menvier branded) |



- Simple plug in address header
- Standard or weatherproof versions available

SOUNDERS FOR DF1000 & DF4000



A choice of 2 loop powered addressable sounders are available for DF1000 and DF4000.

In addition to the loop powered sounders a wide range of conventional sounders and beacons are available which can operate with DF1000 and DF4000, these are either connected to the conventional sounder circuit outputs of the panel, or alternatively, they can be connected to the loop via the MPU244A interface unit.

| Cat. No. | Description |
|----------|---|
| MAS767S | Stand alone loop powered sounder (93 dB(A) max) |
| MAS750 | Stand alone loop powered sounder (85 dB(A) max) |



- Can be stand alone or fitted with a detector base
- Choice of tone settings
- Programmable ringing patterns



- Simple plug in addressing system
- No switch setting required

ADDRESS HEADERS



Addressing of devices connected to DF1000 and DF4000 systems is by means of plug in address headers. These are supplied in sets, the appropriate header is simply snapped off from the pack and plugged into the relevant device.

A pack containing address headers for devices 1 - 60 (part number MAM1/60) is supplied with each DF1000 and DF4000 (1 per loop on DF4000 systems)

If higher number addresses are required, or if the original address header set is unavailable in the event of additional devices being added, then address header packs need to be purchased separately.

| Cat. No. | Description |
|----------|--|
| MAM1/60 | Pack of address headers for addresses 1 - 60 |
| MAM60+ | Pack of address headers for addresses 61+ |

- Allows conventional sounders and beacons to be used without wiring back to the main panel.
- Integral power supply and battery backup

MPU244A



MPU244/A provides programmable remote conventional sounder circuits which are fully controlled by the DF1000 or DF4000 loops.

This provides the facility of 4 independently programmable alarm circuits each rated at 1A maximum (subject to a 3A total load).

The unit is ideal for providing a supply to conventional sounders and beacons which is controllable by the panel without the need to run wiring all the way from the control panel to the indicating device MPU244A requires a dedicated mains supply

| Cat. No. | Description |
|----------|------------------------------|
| MPU244A | Alarm power supply interface |

MPU244R



MPU244/R provides 4 remote programmable relay outputs to enable remote signalling to external equipment. Switching is by means of 2 changeover contacts per relay, wired out to heavy duty terminals for ease of installation. MPU244/R requires a dedicated mains supply.

| Cat. No. | Description |
|----------|--------------------------------|
| MPU244R | Remote programmable relay unit |

- Mains rated output contacts

MIU771



MIU771 is an addressable input interface designed to enable a spur of up to 5 conventional detectors plus an unlimited number of conventional callpoints to be connected onto the detection loop of an analogue system.

Conventional callpoints should be wired before conventional detectors on the spur circuit.

| Cat. No. | Description |
|----------|----------------------------|
| MIU771 | Addressable interface unit |



- Compact
- Easy to install design



- Mains rated output contact
- Compact size

MIO230



MIO230 provides input and output signal facilities directly to and from the loop. Output contacts are rated to switch 230V AC direct without the need for any additional equipment.

| Cat. No. | Description |
|----------|---------------------|
| MIO230 | Input output module |



- Easy to install design
- Heavy duty terminals
- LED status indicator

MSI750



MSI 750 is a short circuit isolator designed to enable continued operation of the detection loop in the event of a single short circuit developing.

| Cat. No. | Description |
|----------|------------------------|
| MSI750 | Short circuit isolator |

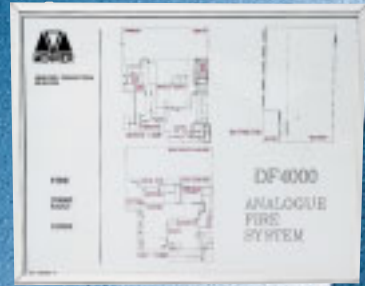
MFAMIM



The slimline mimic is designed to supplement the information provided by a DF4000 main or repeater panel.

The mimic derives its power from the fire control panel or repeater panel.

| Cat. No. | Description |
|----------|---------------------|
| MFAMIM | Slimline mimic unit |



- Slim profile
- Uses LED's to provide a simple graphical display of alarm location
- No mains supply required



COOPER Lighting and Security

Wheatley Hall Road, Doncaster,
South Yorkshire, DN2 4NB, UK.

www.cooper-ls.com

Sales

Tel: 01302 303222

Fax: 01302 367155

E-mail: sales@cooper-ls.com

General

Tel: 01302 321541

Fax: 01302 303213

E-mail: marketing@cooper-ls.com

Export

Tel: +44 1302 303250

Fax: +44 1302 303251

E-mail: export@cooper-ls.com

Conditions of sale

All goods supplied are subject to the company's general conditions of sale which are available on request.

Trade Descriptions

All descriptions represent only particulars of the goods to which they apply and do not form part of any contract. The company reserves the right to change specification without prior notification or public announcement.

Copyright 2003

Cooper Lighting and Security Limited.

Produced by Marketing Services

Cooper Lighting and Security Limited, Doncaster.



Crompton Lighting Surface Fluorescent



[Crompack 5 Batten](#)

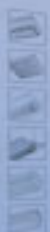
[Crompack 5 Attachments](#)

[Sovereign Batten & Attachments](#)

[Chevin Plus](#)

[Chevin Hyperform](#)

[Wafer TS](#)



[Wafer 20](#)

[Celeste L](#)

[Wafer20](#)

[Duxton](#)

[Vario](#)

[Duxat](#)

www.cooper-ls.com

