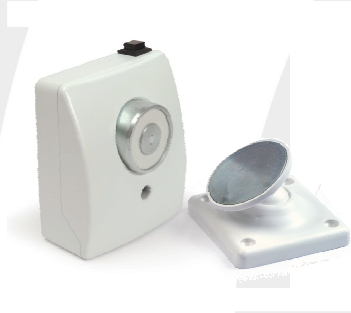


# Product Data Sheet: DRW Series Floor Mounting Door Retainers



## Description

The DRW door retainers are exclusive to Cranford Controls, they combine good looks, high performance and economy in one new low profile package.

With a flame retardant, low profile ABS plastic body or a robust aluminium fascia plate, curvy shape closely matches the curves of the VTG sounder, making a continuous look possible when installing other Cranford Controls products in high profile applications.

Installation is, with knockouts provided for entry of surface mount conduit, there is ample space to connect external wiring to the 4.0mm terminals.

Each DRW door retainer is fitted with a spring loaded release pin mounted centrally within the electro-magnet. On power off, the release pin then ensures that the fire door is pushed away from the electro-magnet.

Additional accessory products are available, including floor brackets, chains and additional keeper plates.

All Cranford Controls door retainers are designed to comply to the latest requirements of EN61000-3-2, EN50081-1, EN60950 and EN1155.

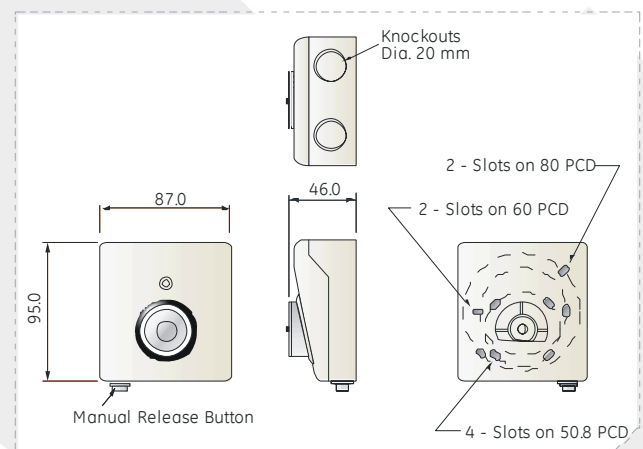
## Technical Information

Part No.	DRW-L	DRW-L-M	DRW-M	DRW-M-M
Supply Voltage and Tolerance:	24Vdc $\pm$ 10%		230Vac $\pm$ 10%	
Current Consumption:	45mA		12mA	
Minimum Rated Holding Force:	200N (20.4kg)			
Maximum Holding Force:	250N (25.5kg)			
Residual Holding:	ZERO			
Release Switch:	YES			
Protection:	IP51			
Keeper Adjustment:	$\pm$ 30 °			
Weight (per unit packed):	400g	420g	400g	420g
Door Closer, Power Size:	3 - 6			



## Dimensions

### ABS Plastic



### Aluminium

