



range introduction

The award winning Masterseal range has been specifically designed for use in either outdoors or indoors and in areas heavily exposed to dust and splashing water. In the garden, workshop, industry, or on farms, there are situations where a supply of electricity, although potentially dangerous, is essential. Scientifically sealed to IP56 and tested by MK well in excess of British Standards, it will protect you and your electrical supply in the unfriendliest of environments. Masterseal sockets are unique in that they can seal around virtually any standard 13 amp plug, allowing safe connection for any appliance.

feature benefits

Waterproof

Protection from strong jets of water from any direction, and protection from dust, sawdust and small particles

Robust construction

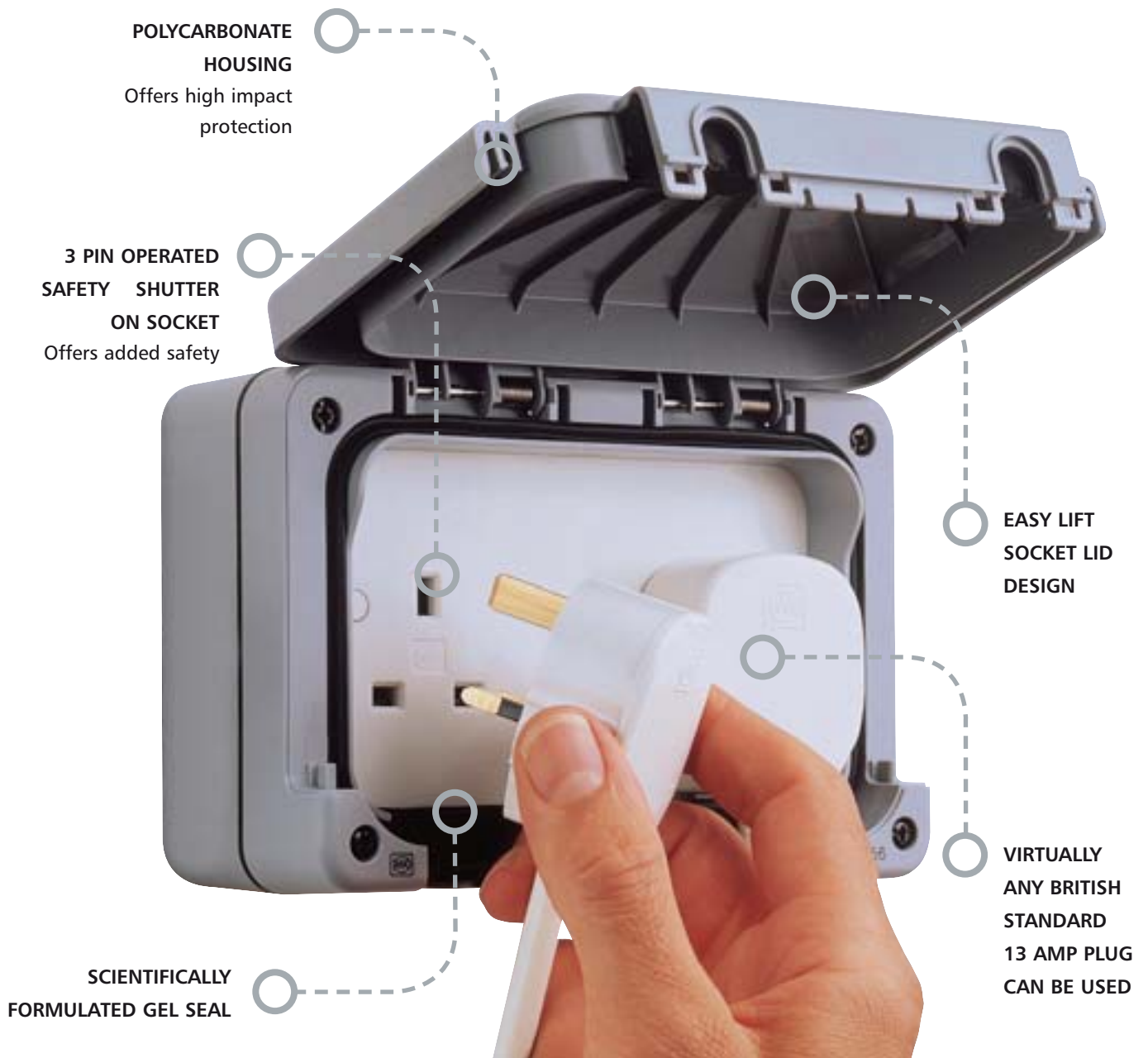
It will not discolour, crack or fade in UV light (unlike many other plastics)

Temperature tolerant

Will maintain operation in extremes of heat and cold

Impaction protection

The Masterseal range is made with polycarbonate, one of the toughest thermoplastics available today – so tough and durable that it's used in motorcycle helmets and car bumpers



Waterproof connection to safeguard home and family

Masterseal's unique design means socket outlets retain their IP56 rating when in use

WHY POLYCARBONATE?

The Masterseal range is made with Polycarbonate, one of the toughest thermoplastics available today – so tough and durable that it's used in motorcycle helmets and car bumpers. It will not discolour, crack or fade in UV light (unlike many other plastics), it has good resistance to most chemicals and will maintain its high resistance to impact in extremes of heat and cold.



Switch Socket Outlets and Timer Socket Outlet

13 AMP
IP56



56486 GRY



56482 GRY



56485 GRY

RCD PROTECTED
13 AMP
IP56



56301 GRY



56231 GRY

Socket Outlets

13 AMP
IP56



56480 WHI



56481 WHI

16 AMP
IP56



56483 GRY



56483 WHI

Connection Unit

13 AMP
IP56



56410 GRY

56486 GRY **1**
56486 WHI **1**
13 AMP DP
1 GANG
SWITCHED
56482 GRY **1**
56482 WHI **1**
13 AMP DP
2 GANG
SWITCHED
56485 GRY **1**
56485 WHI **1**
13 AMP SP
1 GANG
WITH ELECTRONIC TIMER MODULE

Fixing holes are for No.8 woodscrews (not supplied).

Backbox has 5 cable entries, 2 on top and 1 centrally on other 3 sides. Supplied with earth terminals in backbox.

DIMENSIONS: 175 x 115 x 80mm

BS. 1363 Pt. 2: 1995

IP56 BS EN 60529: 1992

Timer Module meets the requirements of IEC 60 730-1 and IEC 60730-2-7 Standards

56301 GRY **1**
56301 WHI **1**
1 GANG DP
30mA RATED TRIPPING CURRENT
ACTIVE CONTROL CIRCUIT
56231 GRY **1**
56231 WHI **1**
2 GANG DP
30mA RATED TRIPPING CURRENT
ACTIVE CONTROL CIRCUIT
56233 GRY **1**
56233 WHI **1**
2 GANG DP
30mA RATED TRIPPING CURRENT
PASSIVE CONTROL CIRCUIT

RCD protected sockets are pulsating d.c. and a.c. fault current sensitive.

Fixing holes are for No.8 woodscrews (not supplied).

Supplied with an earth terminal in the back box. The Sentrysocket has 5 entries. Suitable for supply voltage of 240V a.c. 50Hz

Rotary operated shutter.

DIMENSIONS: 175 x 115 x 80mm

BS.1363 Pt.2: 1995. BS.7288: 1990

IP56 BS EN 60529: 1992

IMPORTANT: For explanation of active and passive control circuit please see page 260 under Sentrysocket heading

56480 GRY **1**
56480 WHI **1**
13 AMP
1 GANG
UNSWITCHED
56481 GRY **1**
56481 WHI **1**
13 AMP
2 GANG
UNSWITCHED

Fixing holes are for No.8 woodscrews (not supplied).

56480 has 4 x 20mm entries, 1 on top, bottom and each side and is supplied with an earth terminal in the back box.

56481 has 5 entries.

Backbox has 5 cable entries, 2 on top and 1 centrally on other 3 sides. Supplied with earth terminals in backbox.

DIMENSIONS:

1 gang: 95 x 95 x 80mm

2 gang: 175 x 115 x 80mm

BS.1363 Pt.2: 1995

IP56 BS EN 60529: 1992

56483 GRY **1**
56483 WHI **1**
16 AMP
1 GANG
2P+E
UNSWITCHED
(NON UK)

Fixing holes are for No.8 woodscrews (not supplied).

56483 is for use with plugs having right angled cable exit. It cannot be used with rear entry box (56504).

DIMENSIONS:
95 x 95 x 80mm

IEC 60884-1: 2002

EDIN VDE 0624-1:1999-09

56410 GRY **1**
56410 WHI **1**
13 AMP DP
1 GANG
SWITCHED, FUSED

Fitted with a 13A fuse link to BS.1362.

Fixing holes are for No.8 woodscrews (not supplied) Backbox has 4 x 20mm entries, 1 on each edge, and is supplied with an earth terminal in the backbox.

DIMENSIONS: 95 x 95 x 80mm

BS.1363 Pt.4:1995

IP56 BS EN 60529: 1992

Masterseal enclosures are manufactured from polycarbonate. This provides an extremely high level of impact resistance. However some chemicals and synthetic oils can harm polycarbonate.

Refer to Technical Hotline for assistance +44 (0) 1268 563720

technical hotline +44 (0)1268 563720

ingress protected | wiring devices

Switches

10 AMP
IP56
10 AMP
IP56
10 AMP
IP56
20 AMP
IP56
SECRET KEY
20 AMP
IP56


56400 GRY



56400 WHI



56401 GRY



56401 WHI



56402 GRY



56402 WHI



56406 GRY



56406 WHI



56407 GRY



56408 GRY



56408 WHI



56409 GRY



56411 GRY



56413 GRY



56414 GRY



56414 GRY

56400 GRY **1**
56400 WHI **1**
 10 AMP 1 GANG
 SP ONE-WAY

56401 GRY **1**
56401 WHI **1**
 10 AMP 1 GANG
 SP TWO-WAY

 Fixing holes are for No:8
 woodscrews (not supplied).

 Each switch is fitted with a
 neon which can be wired as
 a locator.

 The enclosure has 4 x
 20mm entries, 1 on top,
 bottom and each side and is
 supplied with an earth
 terminal and a loop terminal
 in the back box.

 These switches (except push
 switches) do NOT have to
 be derated when used with
 fluorescent or inductive
 loads.

 DIMENSIONS:
 95 x 95 x 57mm

 BS EN 60669: 2000
 IP56 to BS EN 60529: 1992
 VDE 0632-1A

56402 GRY **1**
56402 WHI **1**
 10 AMP 2 GANG
 SP ONE-WAY

56406 GRY **1**
56406 WHI **1**
 10 AMP 1 GANG
 DP ONE-WAY

 Fixing holes are for No:8
 woodscrews (not supplied).

 Each switch is fitted with a
 neon which can be wired as
 a locator.

 The enclosure has 4 x
 20mm entries, 1 on top,
 bottom and each side and is
 supplied with an earth
 terminal and a loop terminal
 in the back box.

 These switches (except push
 switches) do NOT have to
 be derated when used with
 fluorescent or inductive
 loads.

 DIMENSIONS:
 95 x 95 x 57mm

 BS EN 60669: 2000
 IP56 to BS EN 60529: 1992
 VDE 0632-1A

56407 GRY **1**
56407 WHI **1**
 10 AMP 1 GANG
 SP TWO-WAY
 PUSH TO MAKE OR
 PUSH TO BREAK
 'BELL'

56408 GRY **1**
56408 WHI **1**
 10 AMP 1 GANG
 SP TWO-WAY
 PUSH TO MAKE OR
 PUSH TO BREAK
 'PRESS'

 BS EN 60669-1:2000
 IP56 to BS EN 60529: 1992
 VDE 0632-1A

56409 GRY **1**
 20 AMP 1 GANG
 DP ONE-WAY
 'PRESS'

 BS EN 60669-1:2000
 IP56 to BS EN 60529: 1992
 VDE 0632-1A

56411 GRY **1**
56411 WHI **1**
 20 AMP 1 GANG
 SP TWO-WAY
 SECRET KEY SWITCH
 MARKED 'EMG LTG TEST'

56412 GRY **1**
56412 WHI **1**
 20 AMP 1 GANG
 DP ONE-WAY
 SECRET KEY SWITCH

 Fixing holes are for No.8
 woodscrews (not supplied).
 Backbox has 4 x 20mm
 entries, 1 on top, bottom
 and each side. Supplied
 with an earth terminal and a
 loop terminal in the
 backbox.

 DIMENSIONS:
 95 x 95 x 80mm
 BS EN 60669: 2000
 IP56 to BS EN 60529: 1992

56413 GRY **1**
56413 WHI **1**
 20 AMP
 SP TWO-WAY SWITCH +
 20 AMP 2 WAY
 SECRET KEY SWITCH
 MARKED 'EMG LTG TEST'

56414 GRY **1**
56414 WHI **1**
 MODULAR GRID PLUS
 ENCLOSURE SUPPLIED WITH
 1 AND 2 GANG INSERTS*

 Fixing holes are for No.8
 woodscrews (not supplied).
 Backbox has 4 x 20mm
 entries, 1 on top, bottom
 and each side. Supplied
 with an earth terminal and a
 loop terminal in the
 backbox.

 DIMENSIONS:
 95 x 95 x 80mm
 BS EN 60669: 2000
 IP56 to BS EN 60529: 1992

 * NOTE: Installers may select
 any switch or neon
 modules, excluding
 dimmers, from Grid Plus
 range and configure product
 to suit installation
 requirements.

Switch Enclosures

Switch Modules

Neon Modules

Photo Electric (Dusk/Dawn)

IP56

10 AMP

20 AMP

IP56



56420 GRY



56421 WHI



56422 GRY



56422 WHI



56881 BLK



56882 BLK



56883 BLK



56891 BLK



56892 BLK



56893 BLK



56896 BLK



56889 RED



56748 GRY

56420 GRY
56420 WHI
1 GANG FOR USE WITH ANY ONE SWITCH MODULE

1
1

56421 GRY
56421 WHI
1 GANG WITH NEON FOR USE WITH ANY SWITCH AND ANY NEON MODULE

1
1

56422 GRY
56422 WHI
2 GANG FOR USE WITH ANY TWO SWITCH MODULES

1
1

Fixing holes are for No.8 woodscrews (not supplied).

Each enclosure is fitted with a neon which should be wired as a locator.

The enclosure has 4 x 20mm entries, 1 on top, bottom and each side and is supplied with an earth terminal and a loop terminal in the back box.

NOTE: These enclosures are for use with the Masterseal switch and neon modules.

DIMENSIONS:
95 x 95 x 57mm

IP56 to BS EN 60529: 1992

56881 BLK
10 AMP SP ONE-WAY

10

56882 BLK
10 AMP SP TWO-WAY

10

56883 BLK
10 AMP DP ONE-WAY

10

For use only with Masterseal switch enclosures.

These switches do NOT have to be derated when used with fluorescent or inductive loads.

BS EN 60669-1: 2000

56891 BLK
20 AMP SP ONE-WAY

10

56892 BLK
20 AMP SP TWO-WAY

10

56893 BLK
20 AMP INTERMEDIATE

10

56896 BLK
20 AMP DP ONE-WAY

10

For use only with Masterseal switch enclosures.

These switches do NOT have to be derated when used with fluorescent or inductive loads.

BS EN 60669-1: 2000

56889 RED
200-250V NEON RED

10

BS.5733: 1995

56748 GRY
AUTOMATIC SWITCH WITH FIXED AMBIENT LIGHT THRESHOLDS AND OPTIONAL ADJUSTABLE TIMER

1

Masterseal photo electric switch will automatically switch on at dusk and off at dawn. Alternatively, an optional user adjustable time period can be used to switch the load OFF before dawn, if required. Suitable for supply voltage of 230V a.c. 50Hz

DIMENSIONS: 95 x 95 x 65mm

NOMINAL LIGHT LEVEL

THRESHOLDS:

25 lux ON, 40 lux OFF

Optional timer adjustable from 1-15 hours (nominal)

RATING: single pole 6 amp resistive

1000W Tungsten GLS

1000W Tungsten Halogen

1200W Fluorescent

(without PF correction).

100 μ f max. load capacitance.

IEC 60669-2-1

IP56 to BS EN.60529: 1992

BS EN.50081-1 BS EN.50082-1

This product is not suitable for use with low energy, compact, Fluorescent lamps.

technical hotline +44 (0)1268 563720

ingress protected | wiring devices

Data/Telecom Enclosure Euro Format

Euro Data Modules

Junction Box

IP56
TELECOM
DATA
ISDN
IP56


56423 GRY



K5820 WHI



K5820 BLK



K5821 WHI



K5821 BLK



K5844 WHI



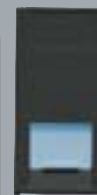
K5887 WHI



K5887 BLK



K5840 WHI



K5840 BLK



56506 GRY



56506 WHI

56423 GRY
56423 WHI

1 GANG
DATA ENCLOSURE
FOR ONE MODULE EURO OUTLET
SUPPLIED WITH
2 X HALF MODULE BLANKS

1
1
K5820 WHI
K5820 BLK

BT MASTER
ONE MODULE

K5821 WHI
K5821 BLK

BT SECONDARY
ONE MODULE

5
5
K5844 WHI

RJ45 CAT 5E
ANGLED UNSCREENED
ONE MODULE

K5887 WHI
K5887 BLK

RJ11/12
ONE MODULE

5
5
5
5
K5840 WHI
K5840 BLK

ISDN
ONE MODULE

5
5
5
5
56506 GRY
56506 WHI

JUNCTION BOX
WITH FOUR
4-WAY TERMINALS

1
1

2 data modules can be accommodated providing care is used to ensure that the cables are correctly routed through the outlet.

Fixing holes are for No.8 woodscrews (not supplied). Backbox has 4 x 20mm entries, 1 on each edge. Supplied with an earth terminal and a loop terminal in the backbox.

DIMENSIONS: 95 x 95 x 80mm
IP56 to BS EN.60529: 1992

DIMENSIONS:
25 x 50mm
BS.6312 Pt2

K5844
Enhanced Cat 5 performance. Suitable for both 568A and 568B wiring schemes. Supplied with cable tie and cable anchors to secure wires in the connectors.

TIA/EIA TSB40A: Cat 5e
TIA/EIA 568-A: Cat 5e
ISO/IEC11801: Cat 5e

K5887
Suitable for both RJ11 and RJ12 jacks
RJ11: 4 wire
RJ12: 6 wire
FCC68

DIMENSIONS:
25 x 50mm

Incorporates line terminating resistor.

DIMENSIONS:
25 x 50mm

TIA/EIA TSB40A
TIA/EIA 568-A
ISO/IEC11801

Fixing holes are for No. 8 woodscrews (not supplied).

The enclosure has 4 entries, 1 on top, bottom and both sides.

TERMINAL CAPACITY:
Each terminal block accepts four 2.5mm² cables.

DIMENSIONS:
95 x 95 x 65mm
BS.6220:1983

IP56 to BS EN.60529

Modular TV/Satellite outlets are also available to fit Euro frontplates. See page 31 for details

Rear Entry
Back BoxesFlush Mounting
FramesFlush Mounting
Bezels

Conduit Entries

Accessories



56504 GRY



56505 GRY



56500 GRY



56500 WHI



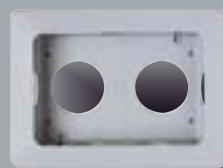
56501 GRY



56502 GRY



56502 WHI



56503 GRY



56460 WHI



56461 WHI



56462 WHI



56463 WHI



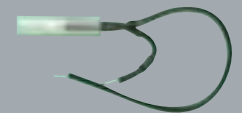
56464 WHI



56837



9933



56890 GRN



K9944

56504 GRY
56504 WHI
1 GANG BOX
REAR CONDUIT ENTRY

1
1

56505 GRY
56505 WHI
2 GANG BOX
REAR CONDUIT ENTRY

1
1

56500 GRY
56500 WHI
1 GANG
PLASTER/TILE
FLUSH MOUNTING FRAME
WITH PROTECTIVE COVER

1
1

56501 GRY
56501 WHI
2 GANG
PLASTER/TILE
FLUSH MOUNTING FRAME
WITH PROTECTIVE COVER

1
1

56502 GRY
56502 WHI
1 GANG
FLUSH MOUNTING BEZEL
FOR USE WITH 56504

1
1

56503 GRY
56503 WHI
2 GANG
FLUSH MOUNTING BEZEL
FOR USE WITH 56505

1
1

56460 GRY
56460 WHI
ENTRY BLANK

5
5

56461 BLK
56461 WHI
PVC CABLE ENTRY
TO PROVIDE DIRECT
ENTRY OF POWER CABLE
TO THE UNIT VIA THE
BOTTOM BOX ENTRY

5
5

56462 BLK
56462 WHI
20MM PLAIN CONDUIT
ENTRY PUSH FIT ADAPTOR
BETWEEN BACK BOX AND
20MM PLAIN CONDUIT

5
5

56463 BLK
56463 WHI
20MM THREADED
CONDUIT ENTRY PUSH FIT
ADAPTOR BETWEEN
BACK BOX AND 20MM
THREADED CONDUIT

5
5

56464 GRY
56464 WHI
BOX COUPLER
FOR GANGING ONE
MASTERSEAL BOX
NEXT TO ANOTHER

5
5

56837 BLK
REPLACEMENT GEL SEAL
FOR SOCKETS

5

9933
M20 EARTH LEAD
ADAPTOR FOR EARTHING
METAL CONDUIT

1

56890 GRN
REPLACEMENT
NEON LOCATOR

5

K9944
FLANGE FOR
PANEL MOUNTING
1 GANG
MASTERSEAL PRODUCTS

5

For use in rear entry surface mounted situations or for use in conjunction with Flush Mounting Bezels (56502 and 56503).

These products must be used if the cable or conduit enters the Masterseal enclosure from the rear.

Fixing holes are for No. 8 woodscrews (not supplied).

NOTE:

1 gang has no side entries.
2 gang has side entries fixed permanently in position.

Earth and loop terminals are provided but not fitted. Supplied with one PVC cable entry List No.56462.

DIMENSIONS:

1 gang: 95 x 95 x 40mm
2 gang: 175 x 115 x 40mm

The Flush adaptors for plaster and tile can be used with finish depths up to 20mm, by using the spacers provided. Allows flush mounted Masterseal products to maintain their IP rating.

Can be used with side entry or back entry enclosures.

DIMENSIONS:

1 gang: 115 x 115 x 34mm
2 gang: 135 x 195 x 34mm

The Flush adaptors for brick and cavity walls should be used on vertical surfaces where no additional finishing, such as plastering is required.

Allows flush mounted Masterseal products to maintain their IP rating.

Can only be used with back entry enclosures.

Supplied with 4 self tapping screws to fix enclosure to mounting bezel.

Clip-on surround hides mounting screws.

DIMENSIONS:

1 gang: 145 x 145 x 41mm
2 gang: 165 x 225 x 41mm



Case Study

technical hotline +44 (0)1268 563720



HOCLAS head office

MK wiring devices and Commando connectors have been installed throughout the brand new Home Office headquarters in Marsham Street, London SW1, providing office accommodation for up to 3,450 people. The new £311million building not only houses staff from the previous headquarters building in St Anne's Gate SW1 but also from other departments of the Home Office.

The building, located on the site previously home to the Department of the Environment, has been

designed by internationally acclaimed architect Terry Farrell. Ackermann DeskPods were also chosen for their quality, reliability and ease of installation.

Flack & Kurtz were the consulting engineers and Bouygues UK the main contractor. Shepherd Engineering Services were responsible for the electrical and mechanical services. Designated as a HOCLAS (Home Office Central London Accommodation Strategy) project, the building has been financed by a Public Private Finance Award.